

## UK Office

### Everest Biotech Ltd

Cherwell Innovation Centre  
77 Heyford Park  
Upper Heyford  
Oxfordshire  
OX25 5HD  
UK

Enquiries:

[info@everestbiotech.com](mailto:info@everestbiotech.com)

Sales:

[sales@everestbiotech.com](mailto:sales@everestbiotech.com)

Tech support:

[support@everestbiotech.com](mailto:support@everestbiotech.com)

Tel: +44 (0)1869 238326

[www.everestbiotech.com](http://www.everestbiotech.com)

**Research Use Only. Not for  
diagnostic or therapeutic use.**

## EB07557 - Goat Anti-ARF1 (variants 1-4) Antibody

Size: 100µg specific antibody in 200µl



### Target Protein

**Principal Names:** ARF1, ADP-ribosylation factor 1, ARF 1, ADP ribosylation factor 1

**Official Symbol:** ARF1

**Accession Number(s):** NP\_001019397.1; NP\_001649.1; NP\_001019398.1;  
NP\_001019399.1

**Human GeneID(s):** [375](#) , [376](#)

**Non-Human GeneID(s):** 11840 (mouse), 64310 (rat)

**Important Comments:** This antibody is expected to recognize all four reported isoforms.

### Immunogen

Peptide with sequence C-EGLDWLSNQLRNQK, from the C Terminus of the protein sequence according to NP\_001019397.1; NP\_001649.1; NP\_001019398.1; NP\_001019399.1.

Please note the [peptide](#) is available for sale.

### Purification and Storage

Purified from goat serum by ammonium sulphate precipitation followed by antigen affinity chromatography using the immunizing peptide.

Supplied at 0.5 mg/ml in Tris saline, 0.02% sodium azide, pH7.3 with 0.5% bovine serum albumin.

Aliquot and store at -20°C. Minimize freezing and thawing.

### Applications Tested

**Peptide ELISA:** antibody detection limit dilution 1:8000.

**Western blot:** Approx 18kDa band observed in lysates of cell lines A431, HeLa, MCF7, NIH3T3, KNRK and MDCK (calculated MW of 20.7kDa according to Human NP\_001649.1, Mouse NP\_031502.1 and Rat NP\_071963.1). Recommended concentration: 0.3-1µg/ml. Primary incubation 1 hour at room temperature.

**Flow Cytometry:** Flow cytometric analysis of A431 cells. Recommended concentration: 10ug/ml.

### Species Reactivity

**Tested:** Human, Mouse, Rat, Dog

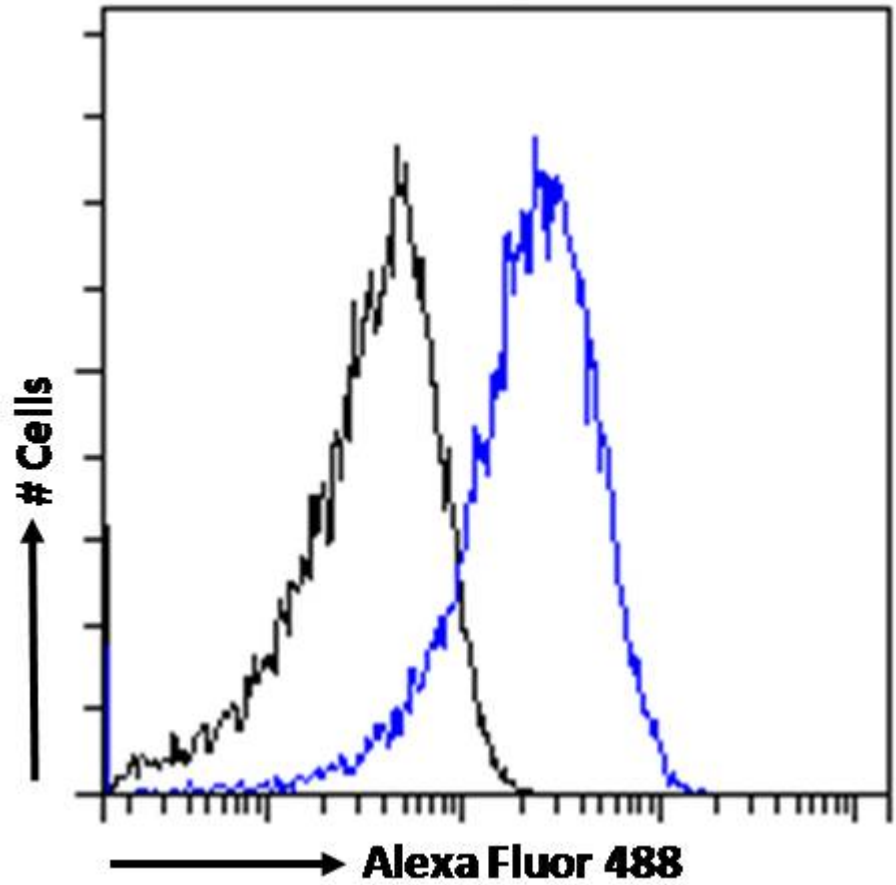
**Expected from sequence similarity:** Human, Mouse, Rat, Dog



EB07557 (1 $\mu$ g/ml) staining of A431 (A) and (0.3 $\mu$ g/ml) of HeLa (B) and MCF7 (C) cell lysate (35 $\mu$ g protein in RIPA buffer). Detected by chemiluminescence.



EB07557 (1 $\mu$ g/ml) staining of NIH3T3 (A), KNRK (B) and MDCK (C) cell lysate (35 $\mu$ g protein in RIPA buffer).  
Detected by chemiluminescence.



EB07557 Flow cytometric analysis of paraformaldehyde fixed A431 cells (blue line), permeabilized with 0.5% Triton. Primary incubation 1hr (10 $\mu$ g/ml) followed by Alexa Fluor 488 secondary antibody (1 $\mu$ g/ml). IgG control: Unimmunized goat IgG (black line) followed by Alexa Fluor 488 secondary antibody.