

## UK Office

### Everest Biotech Ltd

Cherwell Innovation Centre  
77 Heyford Park  
Upper Heyford  
Oxfordshire  
OX25 5HD  
UK

Enquiries:

[info@everestbiotech.com](mailto:info@everestbiotech.com)

Sales:

[sales@everestbiotech.com](mailto:sales@everestbiotech.com)

Tech support:

[support@everestbiotech.com](mailto:support@everestbiotech.com)

Tel: +44 (0)1869 238326

[www.everestbiotech.com](http://www.everestbiotech.com)

**Research Use Only. Not for  
diagnostic or therapeutic use.**

## EB11622 - Goat Anti-ARF4 (aa137-150) Antibody

Size: 100µg specific antibody in 200µl



### Target Protein

**Principal Names:** ADP-ribosylation factor 2, ADP-ribosylation factor 4, ARF2, ARF4, OTTHUMP00000213140, OTTHUMP00000213142, OTTHUMP00000213211

**Official Symbol:** ARF4

**Accession Number(s):** NP\_001651.1

**Human GeneID(s):** [378](#)

**Non-Human GeneID(s):** 11843 (mouse), 79120 (rat)

### Immunogen

Peptide with sequence C-SEMTDKLGLQSLRN, from the internal region of the protein sequence according to NP\_001651.1.

Please note the [peptide](#) is available for sale.

### Purification and Storage

Purified from goat serum by ammonium sulphate precipitation followed by antigen affinity chromatography using the immunizing peptide.

Supplied at 0.5 mg/ml in Tris saline, 0.02% sodium azide, pH7.3 with 0.5% bovine serum albumin.

Aliquot and store at -20°C. Minimize freezing and thawing.

### Applications Tested

**Peptide ELISA:** antibody detection limit dilution 1:128000.

**Western blot:** Approx 19kDa band observed in lysates of cell lines NIH3T3 and HeLa (calculated MW of 20.5kDa according to Human NP\_001651.1 and 20.4kDa according to Mouse NP\_031505.1 ). Recommended concentration: 0.3-1µg/ml. Primary incubation 1 hour at room temperature.

**IHC:** Paraffin embedded Human Thymus. Recommended concentration: 5µg/ml.

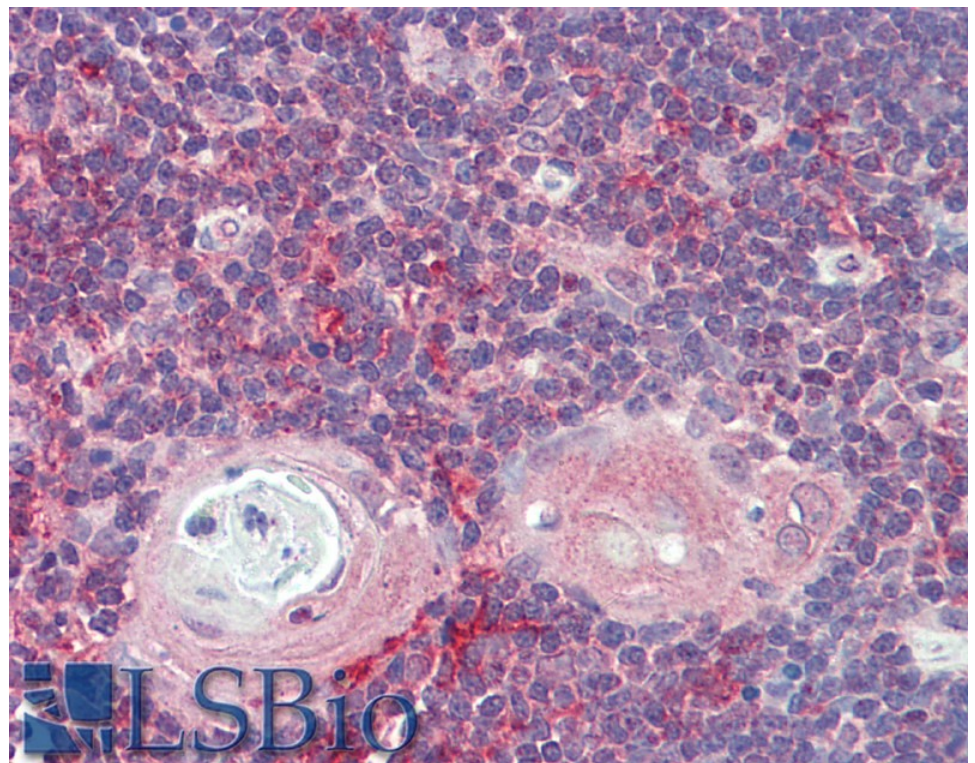
### Species Reactivity

**Tested:** Human, Mouse

**Expected from sequence similarity:** Human, Mouse, Rat, Pig, Cow



EB11622 (0.5 $\mu$ g/ml) staining of NIH3T3 (A) and HeLa (B) lysates (35 $\mu$ g protein in RIPA buffer). Detected by chemiluminescence.



EB11622 (5 $\mu$ g/ml) staining of paraffin embedded Human Thymus. Steamed antigen retrieval with citrate buffer pH 6, AP-staining.