



UK Office

Everest Biotech Ltd

Cherwell Innovation Centre
77 Heyford Park
Upper Heyford
Oxfordshire
OX25 5HD
UK

Enquiries:

info@everestbiotech.com

Sales:

sales@everestbiotech.com

Tech support:

support@everestbiotech.com

Tel: +44 (0)1869 238326

Fax: +44 (0)1869 238327

US Office

Everest Biotech c/o Abcore

405 Maple Street, Suite A106
Ramona,
CA 92065
USA

Inquiries:

info@everestbiotech.com

Sales:

usasales@everestbiotech.com

Tech support:

support@everestbiotech.com

Tel: 888-320-4628 (toll-free)

Fax: 888-841-9041

www.everestbiotech.com

**Research Use Only. Not for
diagnostic or therapeutic use.**

EB07706 - Goat Anti-Arginase, type 1 / ARG1 Antibody

Size: 100µg specific antibody in 200µl



Target Protein

Principal Names: ARG1, arginase, type I, arginase, liver, A-I

Official Symbol: ARG1

Accession Number(s): NP_000036.2; NP_001231367.1; NP_001355949.1

Human GeneID(s): [383](#)

Important Comments: Please note that ARG1 is not expressed in Human M2 macrophages, but it is in other species (eg rodents).

Immunogen

Peptide with sequence C-REGNHKPIDYLNPPK, from the C Terminus of the protein sequence according to NP_000036.2; NP_001231367.1; NP_001355949.1.

Please note the [peptide](#) is available for sale.

Purification and Storage

Purified from goat serum by ammonium sulphate precipitation followed by antigen affinity chromatography using the immunizing peptide.

Supplied at 0.5 mg/ml in Tris saline, 0.02% sodium azide, pH7.3 with 0.5% bovine serum albumin.

Aliquot and store at -20°C. Minimize freezing and thawing.

Applications Tested

Peptide ELISA: antibody detection limit dilution 1:2000.

Western blot: Approx 37kDa band observed in Human Liver lysates (calculated MW of 34.7kDa according to NP_000036.2. Recommended concentration: 0.01-0.03µg/ml.

Primary incubation 1 hour at room temperature.

IHC: Paraffin embedded Human Liver. Recommended concentration: 5-6µg/ml.

Immunofluorescence: Strong expression of the protein seen in the cytoplasm of HepG2 cells. Recommended concentration: 10µg/ml.

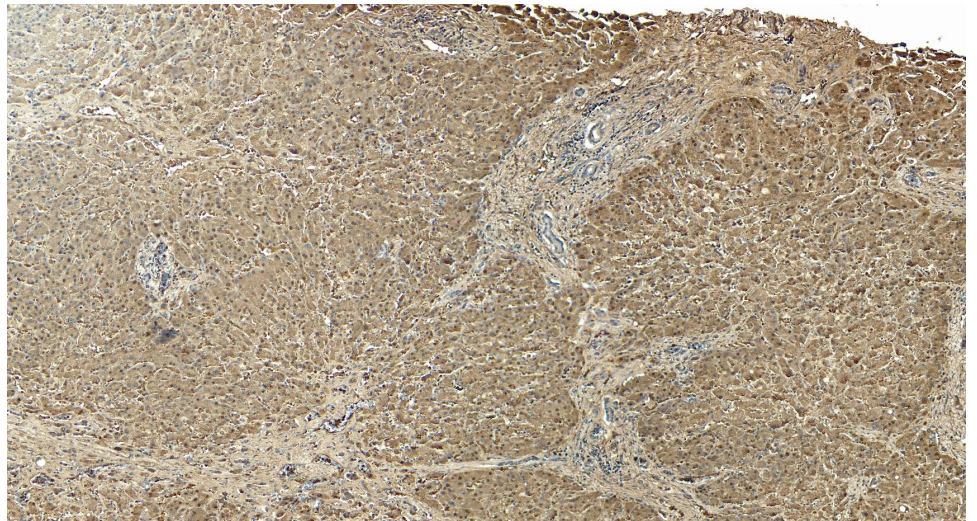
Species Reactivity

Tested: Human

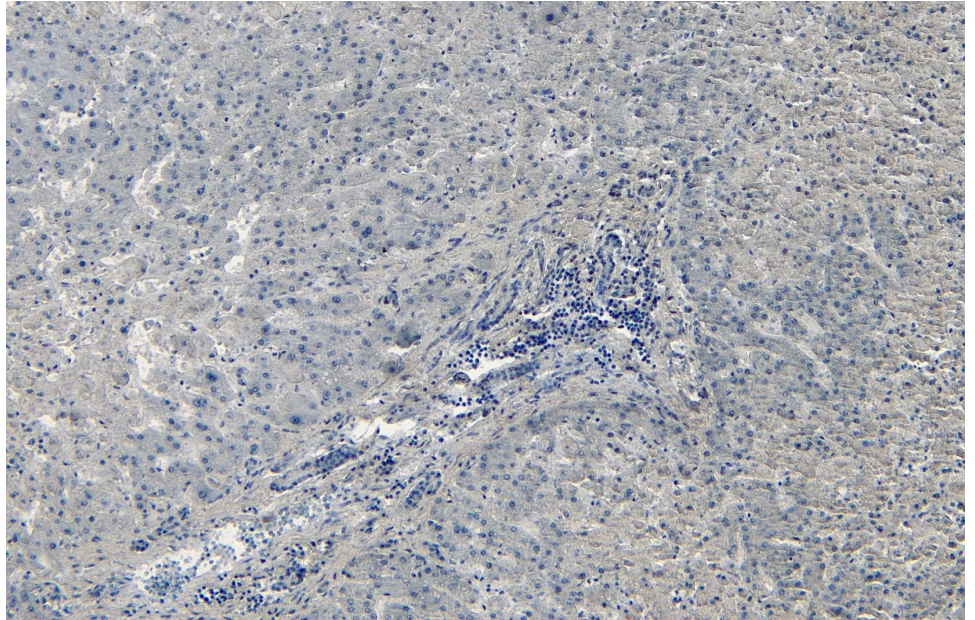
Expected from sequence similarity: Human, Dog



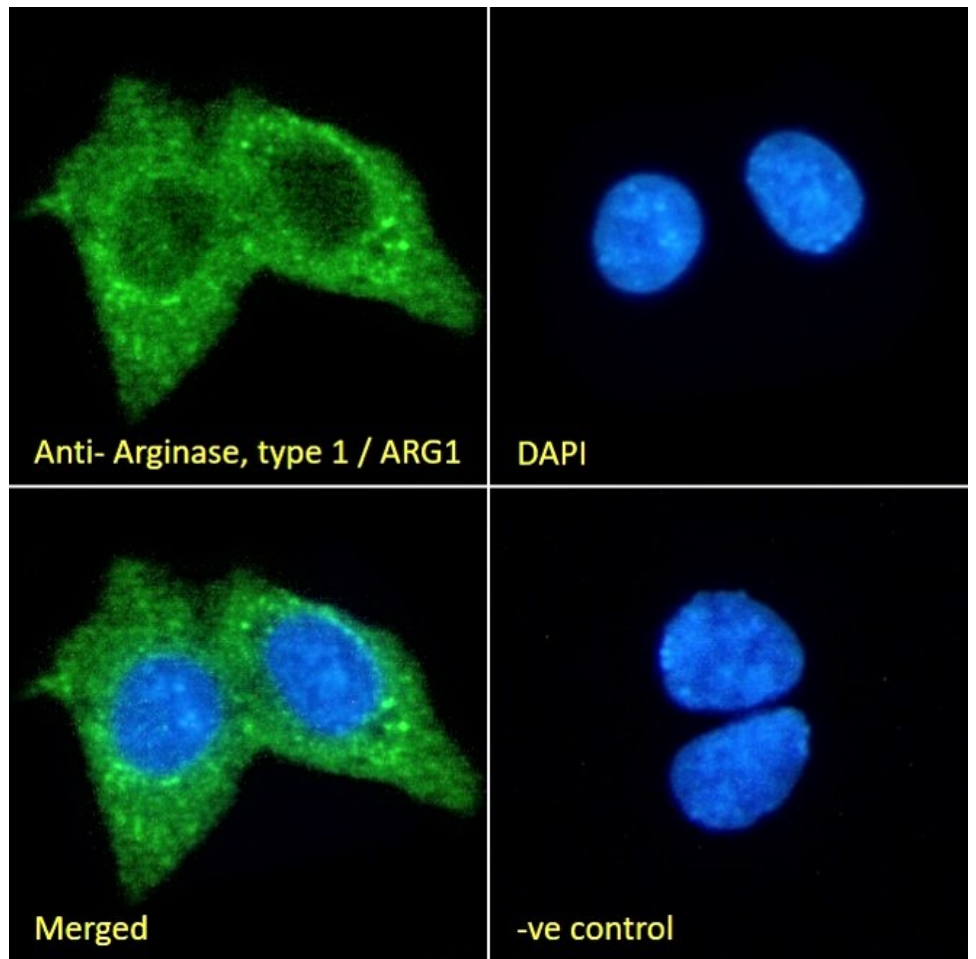
EB07706 (0.01µg/ml) staining of Human Liver lysate (35µg protein in RIPA buffer). Detected by chemiluminescence.



EB07706 (5µg/ml) staining of paraffin embedded Human Liver. Heat induced antigen retrieval with citrate buffer pH 6, HRP-staining.



EB07706 Negative Control showing staining of paraffin embedded Human Liver, with no primary antibody.



EB07706 Immunofluorescence analysis of paraformaldehyde fixed HepG2 cells, permeabilized with 0.15% Triton. Primary incubation 1hr (10ug/ml) followed by Alexa Fluor 488 secondary antibody (2ug/ml), showing cytoplasmic staining. The nuclear stain is DAPI (blue). Negative control: Unimmunized goat IgG (10ug/ml) followed by Alexa Fluor 488 secondary antibody (2ug/ml).