



International Office

Everest Biotech Ltd

Vector Laboratories, Inc.
6737 Mowry Ave
Newark, CA 94560
United States

Customer Service:

customerservice@vectorlabs.com

Technical Service:

technical@vectorlabs.com

Tel: +1 (800) 227-6666

www.everestbiotech.com

**Research Use Only. Not for
diagnostic or therapeutic use.**

EB10226 - Goat Anti-ARHGDIA Antibody

Size: 100µg specific antibody in 200µl



Target Protein

Principal Names: GDIA1, MGC117248, Rho GDP dissociation inhibitor (GDI) alpha, RHOGDI, RHOGDI-1, ARHGDIA

Official Symbol: ARHGDIA

Accession Number(s): NP_004300.1

Human GeneID(s): [396](#)

Non-Human GeneID(s): 192662 (mouse)

Immunogen

Peptide with sequence C-QLAQIAAENE, from the internal region of the protein sequence according to NP_004300.1.

Please note the [peptide](#) is available for sale.

Purification and Storage

Purified from goat serum by ammonium sulphate precipitation followed by antigen affinity chromatography using the immunizing peptide.

Supplied at 0.5 mg/ml in Tris saline, 0.02% sodium azide, pH7.3 with 0.5% bovine serum albumin.

Aliquot and store at -20°C. Minimize freezing and thawing.

Applications Tested

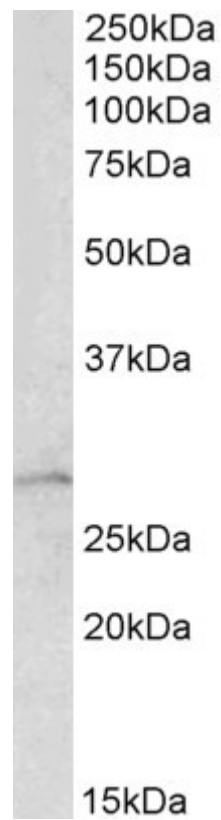
Peptide ELISA: antibody detection limit dilution 1:8000.

Western blot: Approx 28kDa band observed in Mouse and Rat Lung lysates (calculated MW of 23.4kDa according to Mouse NP_598557.3). This molecular weight is routinely observed by other sources. Recommended concentration: 1-3µg/ml.

Species Reactivity

Tested: Mouse, Rat

Expected from sequence similarity: Human, Mouse, Dog, Cow



EB10226 (1µg/ml) staining of Mouse Lung lysate (35µg protein in RIPA buffer). Primary incubation was 1 hour.
Detected by chemiluminescence.