



## UK Office

### Everest Biotech Ltd

Cherwell Innovation Centre  
77 Heyford Park  
Upper Heyford  
Oxfordshire  
OX25 5HD  
UK

Enquiries:

[info@everestbiotech.com](mailto:info@everestbiotech.com)

Sales:

[sales@everestbiotech.com](mailto:sales@everestbiotech.com)

Tech support:

[support@everestbiotech.com](mailto:support@everestbiotech.com)

Tel: +44 (0)1869 238326

Fax: +44 (0)1869 238327

## US Office

### Everest Biotech c/o Abcore

405 Maple Street, Suite A106  
Ramona,  
CA 92065  
USA

Inquiries:

[info@everestbiotech.com](mailto:info@everestbiotech.com)

Sales:

[usasales@everestbiotech.com](mailto:usasales@everestbiotech.com)

Tech support:

[support@everestbiotech.com](mailto:support@everestbiotech.com)

Tel: 888-320-4628 (toll-free)

Fax: 888-841-9041

[www.everestbiotech.com](http://www.everestbiotech.com)

**Research Use Only. Not for  
diagnostic or therapeutic use.**

## EB05813 - Goat Anti-ARIH2 / TRIAD1 Antibody

Size: 100µg specific antibody in 200µl



### Target Protein

**Principal Names:** ARIH2, ariadne homolog 2 (Drosophila), ARI2, TRIAD1, all-trans retinoic acid inducible RING finger, ariadne-2 (D. melanogaster) homolog (all-trans retinoic acid inducible RING finger), FLJ10938, FLJ33921, OTTHUMP00000210388, ariadne homolog 2

**Official Symbol:** ARIH2

**Accession Number(s):** NP\_006312.1

**Human GeneID(s):** [10425](#)

**Non-Human GeneID(s):** 23807 (mouse)

### Immunogen

Peptide with sequence C-EQRRRTLLKDFHDT, from the C Terminus of the protein sequence according to NP\_006312.1.

Please note the [peptide](#) is available for sale.

### Purification and Storage

Purified from goat serum by ammonium sulphate precipitation followed by antigen affinity chromatography using the immunizing peptide.

Supplied at 0.5 mg/ml in Tris saline, 0.02% sodium azide, pH7.3 with 0.5% bovine serum albumin.

Aliquot and store at -20°C. Minimize freezing and thawing.

### Applications Tested

**Peptide ELISA:** antibody detection limit dilution 1:8000.

**Western blot:** Approx 60kDa band observed in nuclear lysates of HeLa and K562 (Calculated MW of 57.8kDa according to NP\_006312.1) Recommended concentration: 1-3µg/ml. Primary incubation was 1 hour. Customer's experiments gave a band at approx 60kDa in lysates in both Human HeLa and Mouse Muscle (IM2 & C2C12) cells. This band disappeared after RNAi knock-down. Calculated MW of 57.8kDa according to NP\_006312.1). Recommended concentration: 1-3µg/ml. This antibody has also been successfully used in WB in PMID: 24486325.

**Immunofluorescence:** Customer's experiments showed nuclear staining in DAPI with IF. This antibody has also been successfully used in IF in PMID: 24486325.

### Species Reactivity

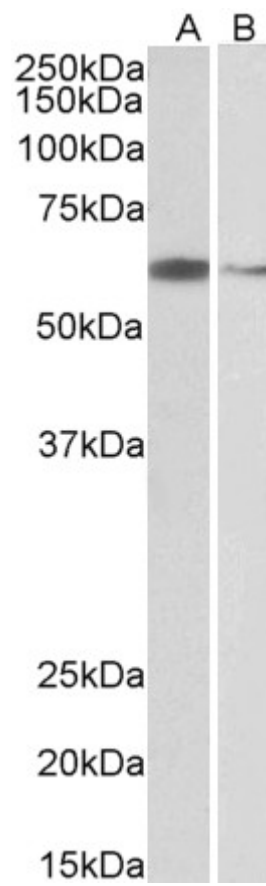
**Tested:** Human, Mouse

**Expected from sequence similarity:** Human, Mouse, Rat, Dog, Cow

### Specific Reference

**This antibody has been successfully used in WB and IF on Human:**

Raz V, Buijze H, Raz Y, Verwey N, Anvar SY, Aartsma-Rus A, van der Maarel SM. A novel feed-forward loop between ARIH2 E3 ligase and PABPN1 regulates aging-associated muscle degeneration. Am J Pathol. 2014 Apr;184(4):1119-31. PMID: 24486325



EB05813 (2 $\mu$ g/ml) staining of Hela (A) and K562 (B) nuclear lysates (35 $\mu$ g protein in RIPA buffer). Detected by chemiluminescence.