



## International Office

### Everest Biotech Ltd

Vector Laboratories, Inc.  
6737 Mowry Ave  
Newark, CA 94560  
United States

Customer Service:

[customerservice@vectorlabs.com](mailto:customerservice@vectorlabs.com)

Technical Service:

[technical@vectorlabs.com](mailto:technical@vectorlabs.com)

Tel: +1 (800) 227-6666

[www.everestbiotech.com](http://www.everestbiotech.com)

**Research Use Only. Not for  
diagnostic or therapeutic use.**

## EB08474 - Goat Anti-ARK5 / NUA1 Antibody

Size: 100µg specific antibody in 200µl



### Target Protein

**Principal Names:** NUA1, NUA1 family, SNF1-like kinase, 1, ARK5, KIAA0537, AMP-activated protein kinase family member 5, AMPK-related protein kinase 5

**Official Symbol:** NUA1

**Accession Number(s):** NP\_055655.1

**Human GeneID(s):** [9891](#)

**Non-Human GeneID(s):** 299694 (rat)

### Immunogen

Peptide with sequence C-QNRPRPQYLKRYRNR, from the internal region of the protein sequence according to NP\_055655.1.

Please note the [peptide](#) is available for sale.

### Purification and Storage

Purified from goat serum by ammonium sulphate precipitation followed by antigen affinity chromatography using the immunizing peptide.

Supplied at 0.5 mg/ml in Tris saline, 0.02% sodium azide, pH7.3 with 0.5% bovine serum albumin.

Aliquot and store at -20°C. Minimize freezing and thawing.

### Applications Tested

**Peptide ELISA:** antibody detection limit dilution 1:8000.

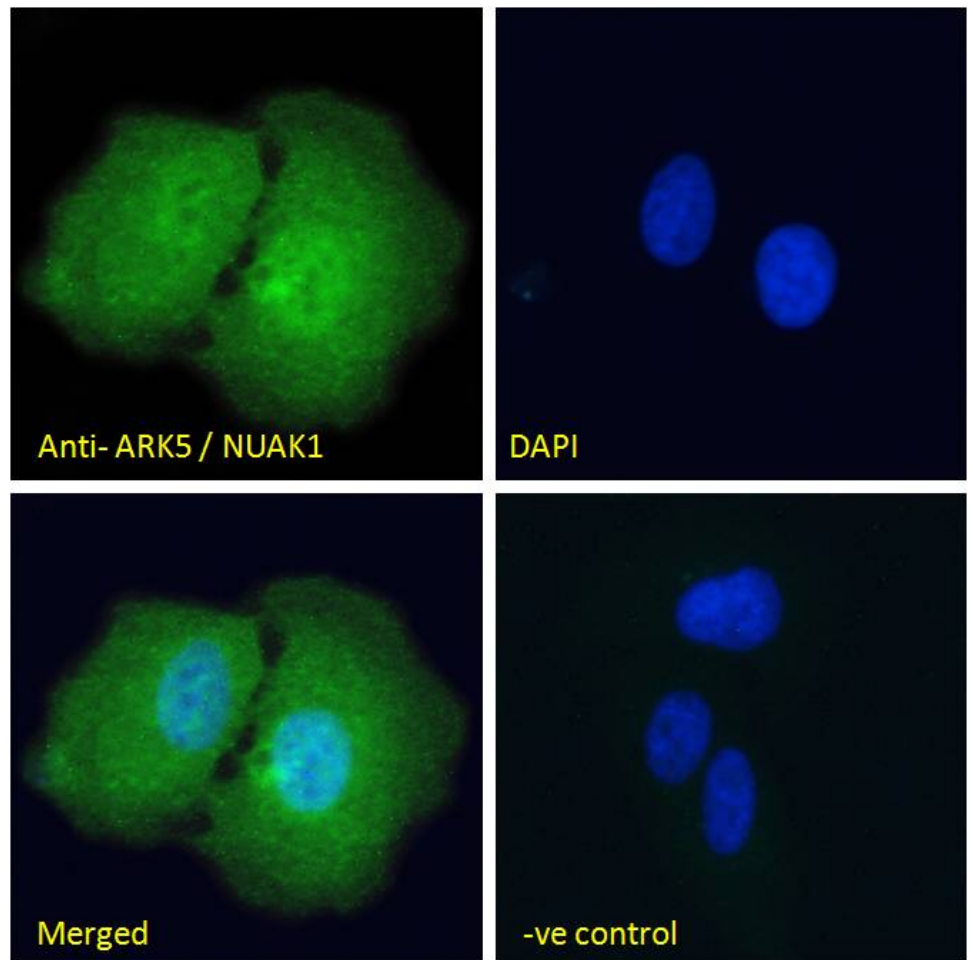
**Immunofluorescence:** Strong expression of the protein seen in the nuclei and cytoplasm of U2OS cells. Recommended concentration: 10µg/ml.

**Flow Cytometry:** Flow cytometric analysis of A431 cells. Recommended concentration: 10ug/ml.

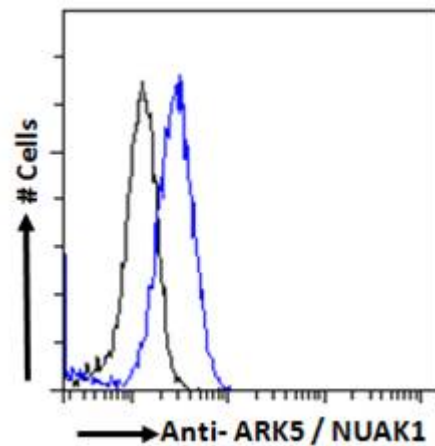
### Species Reactivity

**Tested:** Human

**Expected from sequence similarity:** Human, Rat, Cow



EB08474 Immunofluorescence analysis of paraformaldehyde fixed U2OS cells, permeabilized with 0.15% Triton. Primary incubation 1hr (10ug/ml) followed by Alexa Fluor 488 secondary antibody (2ug/ml), showing nuclear and cytoplasmic staining. The nuclear stain is DAPI (blue). Negative control: Unimmunized goat IgG (10ug/ml) followed by Alexa Fluor 488 secondary antibody (2ug/ml).



EB08474 Flow cytometric analysis of paraformaldehyde fixed A431 cells (blue line), permeabilized with 0.5% Triton. Primary incubation 1hr (10ug/ml) followed by Alexa Fluor 488 secondary antibody (1ug/ml). IgG control: Unimmunized goat IgG (black line) followed by Alexa Fluor 488 secondary antibody.