



UK Office

Everest Biotech Ltd

Cherwell Innovation Centre
77 Heyford Park
Upper Heyford
Oxfordshire
OX25 5HD
UK

Enquiries:

info@everestbiotech.com

Sales:

sales@everestbiotech.com

Tech support:

support@everestbiotech.com

Tel: +44 (0)1869 238326

Fax: +44 (0)1869 238327

US Office

Everest Biotech c/o Abcore

405 Maple Street, Suite A106
Ramona,
CA 92065
USA

Inquiries:

info@everestbiotech.com

Sales:

usasales@everestbiotech.com

Tech support:

support@everestbiotech.com

Tel: 888-320-4628 (toll-free)

Fax: 888-841-9041

www.everestbiotech.com

**Research Use Only. Not for
diagnostic or therapeutic use.**

EB05545 - Goat Anti-ARL2 Antibody

Size: 100µg specific antibody in 200µl



Target Protein

Principal Names: ARL2, ADP-ribosylation factor-like 2, ARFL2, ADP=ribosylation factor-like 2

Official Symbol: ARL2

Accession Number(s): NP_001658.2

Human GeneID(s): [402](#)

Immunogen

Peptide with sequence C-LDDISSRIFTAD, from the C Terminus of the protein sequence according to NP_001658.2.

Please note the [peptide](#) is available for sale.

Purification and Storage

Purified from goat serum by ammonium sulphate precipitation followed by antigen affinity chromatography using the immunizing peptide.

Supplied at 0.5 mg/ml in Tris saline, 0.02% sodium azide, pH7.3 with 0.5% bovine serum albumin.

Aliquot and store at -20°C. Minimize freezing and thawing.

Applications Tested

Peptide ELISA: antibody detection limit dilution 1:64000.

Western blot: Approx. 18kDa band observed in lysates of cell line A431 and approx. 20kDa in nuclear lysates of cell line HeLa (calculated MW of 20.9kDa according to NP_001658.2). Recommended concentration: 0.5-1µg/ml. Primary incubation 1 hour at room temperature.

Immunofluorescence: Strong expression of the protein seen in the cytoplasm and nuclei of U2OS cells. Recommended concentration: 10µg/ml.

Flow Cytometry: Flow cytometric analysis of A431 cells. Recommended concentration: 10ug/ml.

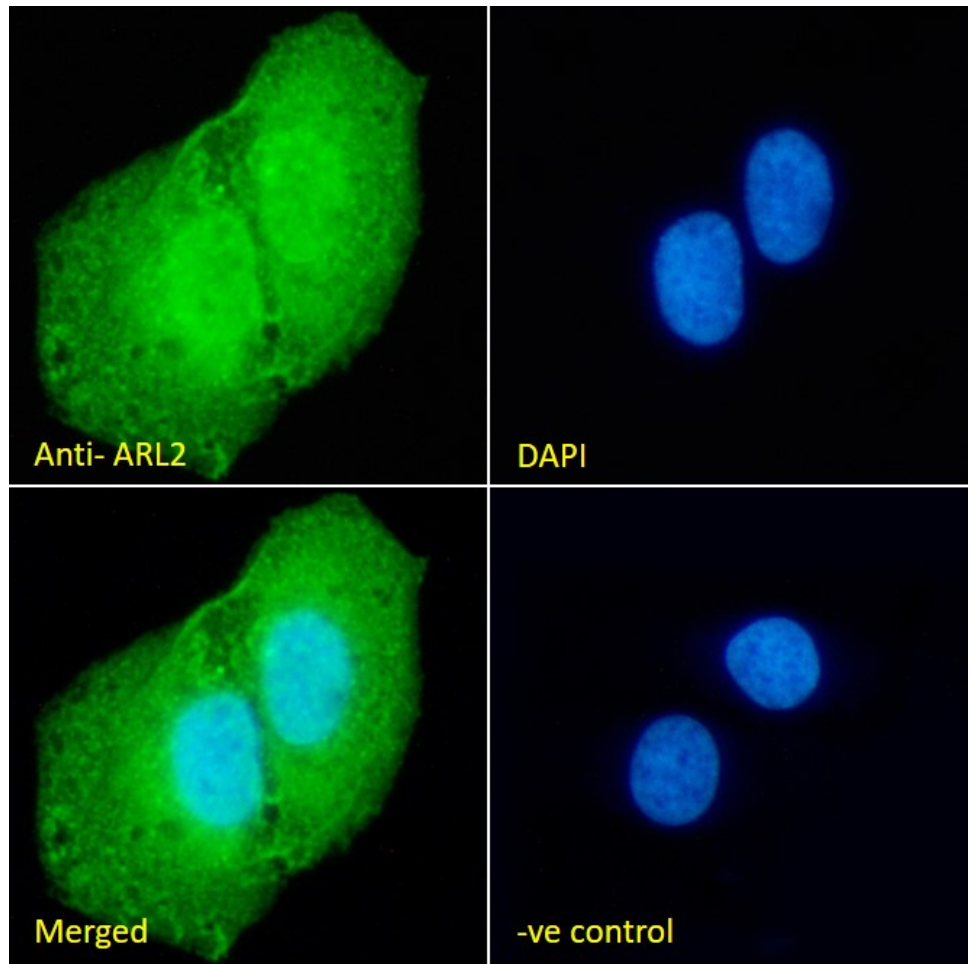
Species Reactivity

Tested: Human

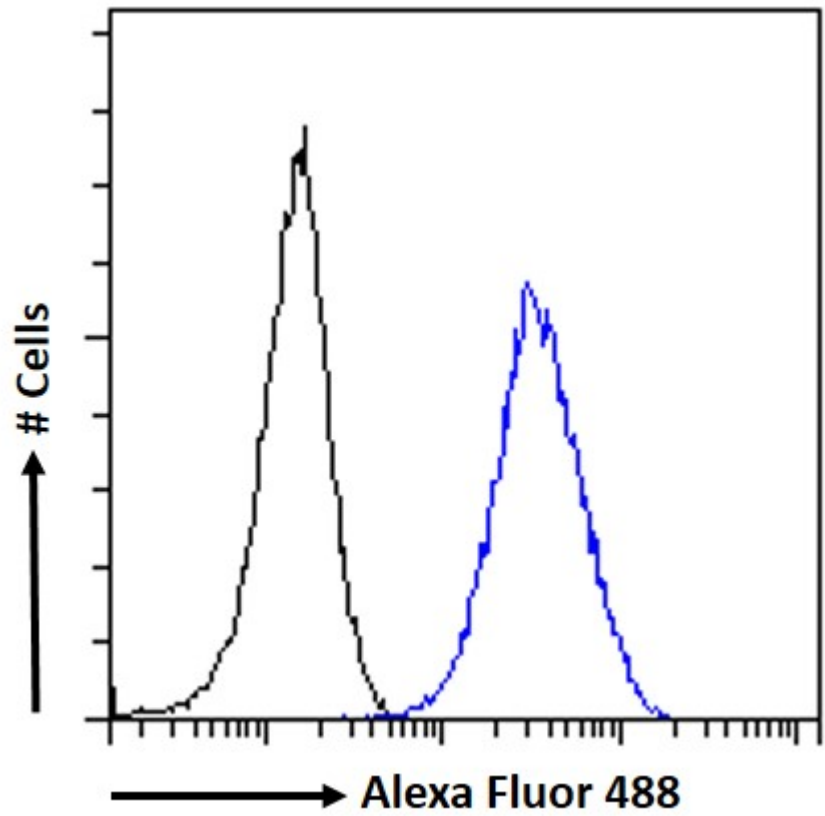
Expected from sequence similarity: Human, Dog



EB05545 (0.5 μ g/ml) staining of A431 (A) and (1 μ g/ml) HeLa nuclear (B) cell lysate (30 μ g protein in RIPA buffer).
Detected by chemiluminescence.



EB05545 Immunofluorescence analysis of paraformaldehyde fixed U2OS cells, permeabilized with 0.15% Triton. Primary incubation 1hr (10ug/ml) followed by Alexa Fluor 488 secondary antibody (2ug/ml), showing nuclear and cytoplasmic staining. The nuclear stain is DAPI (blue). Negative control: Unimmunized goat IgG (10ug/ml) followed by Alexa Fluor 488 secondary antibody (2ug/ml).



EB05545 Flow cytometric analysis of paraformaldehyde fixed A431 cells (blue line), permeabilized with 0.5% Triton. Primary incubation 1hr (10ug/ml) followed by Alexa Fluor 488 secondary antibody (1ug/ml). IgG control: Unimmunized goat IgG (black line) followed by Alexa Fluor 488 secondary antibody.