



## UK Office

### Everest Biotech Ltd

Cherwell Innovation Centre  
77 Heyford Park  
Upper Heyford  
Oxfordshire  
OX25 5HD  
UK

Enquiries:

[info@everestbiotech.com](mailto:info@everestbiotech.com)

Sales:

[sales@everestbiotech.com](mailto:sales@everestbiotech.com)

Tech support:

[support@everestbiotech.com](mailto:support@everestbiotech.com)

Tel: +44 (0)1869 238326

[www.everestbiotech.com](http://www.everestbiotech.com)

**Research Use Only. Not for  
diagnostic or therapeutic use.**

## EB08329 - Goat Anti-Aromatase / CYP19A1 Antibody

Size: 100µg specific antibody in 200µl



### Target Protein

**Principal Names:** CYP19A1, cytochrome P450, family 19, subfamily A, polypeptide 1, ARO, ARO1, CPV1, CYAR, CYP19, MGC104309, P-450AROM, aromataseN: cytochrome P450, family 19, cytochrome P450, subfamily XIX (aromatization of androgens), estrogen synthetase, flavoprotein-linked monooxygenase, microsomal monooxygenase

**Official Symbol:** CYP19A1

**Accession Number(s):** NP\_000094.2; NP\_112503.1

**Human GeneID(s):** [1588](#)

**Important Comments:** This antibody is expected to recognise both reported isoforms (NP\_000094.2 and NP\_112503.1), which are identical

### Immunogen

Peptide with sequence C-HDLSLHPDETKN, from the internal region of the protein sequence according to NP\_000094.2; NP\_112503.1.

Please note the [peptide](#) is available for sale.

### Purification and Storage

Purified from goat serum by ammonium sulphate precipitation followed by antigen affinity chromatography using the immunizing peptide.

Supplied at 0.5 mg/ml in Tris saline, 0.02% sodium azide, pH7.3 with 0.5% bovine serum albumin.

Aliquot and store at -20°C. Minimize freezing and thawing.

### Applications Tested

**Peptide ELISA:** antibody detection limit dilution 1:128000.

**Western blot:** Approx 50-55kDa band observed in Human Placenta lysates (calculated MW of 57.9kDa according to NP\_000094.2 and NP\_112503.1). Recommended concentration: 0.1-0.3µg/ml. Primary incubation was 1 hour.

**IHC:** Paraffin embedded Human Placenta. Recommended concentration: 4µg/ml.

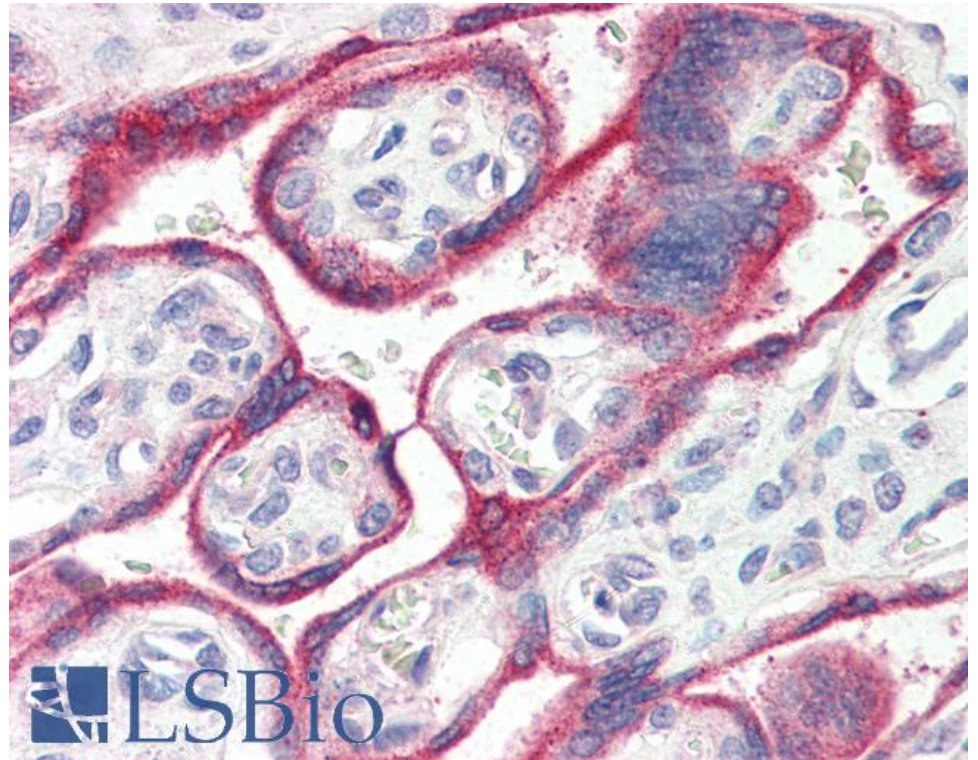
### Species Reactivity

**Tested:** Human

**Expected from sequence similarity:** Human



EB08329 (0.1 $\mu$ g/ml) staining of Human Placenta lysate (35 $\mu$ g protein in RIPA buffer). Detected by chemiluminescence.



EB08329 (4 $\mu$ g/ml) staining of paraffin embedded Human Placenta. Steamed antigen retrieval with citrate buffer pH 6, AP-staining.