

UK Office

Everest Biotech Ltd

Cherwell Innovation Centre
77 Heyford Park
Upper Heyford
Oxfordshire
OX25 5HD
UK

Enquiries:

info@everestbiotech.com

Sales:

sales@everestbiotech.com

Tech support:

support@everestbiotech.com

Tel: +44 (0)1869 238326

www.everestbiotech.com

**Research Use Only. Not for
diagnostic or therapeutic use.**

EB06349 - Goat Anti-ARP1 homolog A Antibody

Size: 100µg specific antibody in 200µl



Target Protein

Principal Names: ACTR1A, ARP1, ARP1 actin-related protein 1 homolog A, centractin alpha (yeast), actin-RPV, centractin alpha, ARP1, yeast homolog A, centrosome-associated actin homolog, ARP1 (actin-related protein 1, yeast) homolog A (centractin alpha), CTRN1, FLJ52695, FLJ52800, FLJ55002, ARP1 actin-related protein 1 homolog A, centractin alpha

Official Symbol: ACTR1A

Accession Number(s): NP_005727.1

Human GeneID(s): [10121](#)

Non-Human GeneID(s): 54130 (mouse)

Important Comments: This epitope was selected to minimise the chance of cross-reactivity with ACTR1B (YEEDGSRAIHRKT).

Immunogen

Peptide with sequence C-YEEDGARSIHRT, from the C Terminus of the protein sequence according to NP_005727.1.

Please note the [peptide](#) is available for sale.

Purification and Storage

Purified from goat serum by ammonium sulphate precipitation followed by antigen affinity chromatography using the immunizing peptide.

Supplied at 0.5 mg/ml in Tris saline, 0.02% sodium azide, pH7.3 with 0.5% bovine serum albumin.

Aliquot and store at -20°C. Minimize freezing and thawing.

Applications Tested

Peptide ELISA: antibody detection limit dilution 1:64000.

Western blot: Approx. 42-45kDa band observed in lysates of cell lines A431 HEK293, HeLa, MCF7, NIH3T3, KNRK and MDCK, and in preliminary testing of Human and Mouse Adrenal gland and Mouse Stomach lysate (calculated MW of 42.6kDa according to Human NP_005727.1, Mouse : NP_058556.1, Rat NP_001099834.1 and Dog NP_001003164.1). Recommended concentration: 0.1-2µg/ml. Primary incubation 1 hour at room temperature.

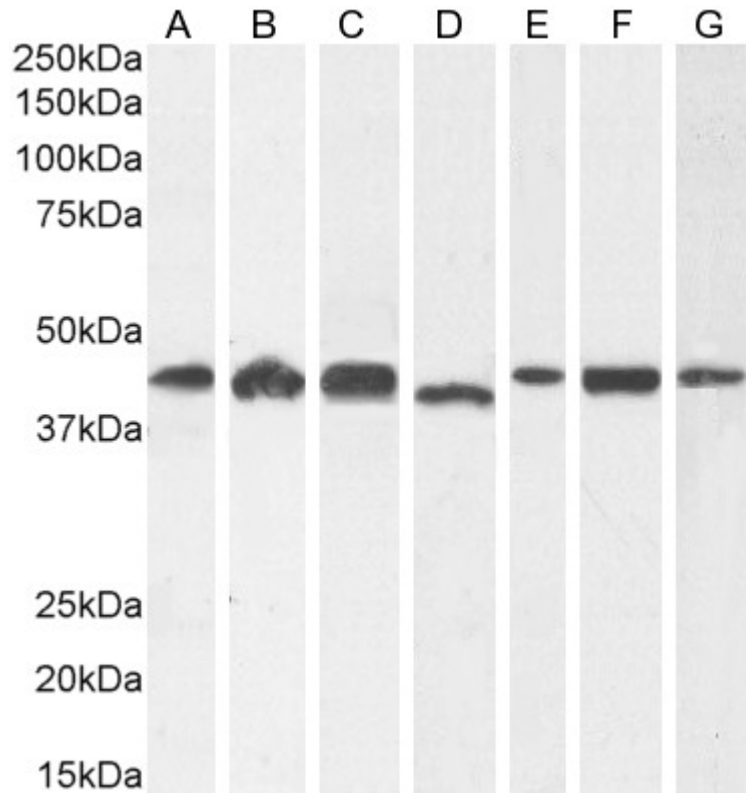
Immunofluorescence: A customer reported cytoplasmic staining on A431 cells at a primary ab concentration of 10ug/ml.

Flow Cytometry: Flow cytometric analysis of A431 cells. Recommended concentration: 10ug/ml.

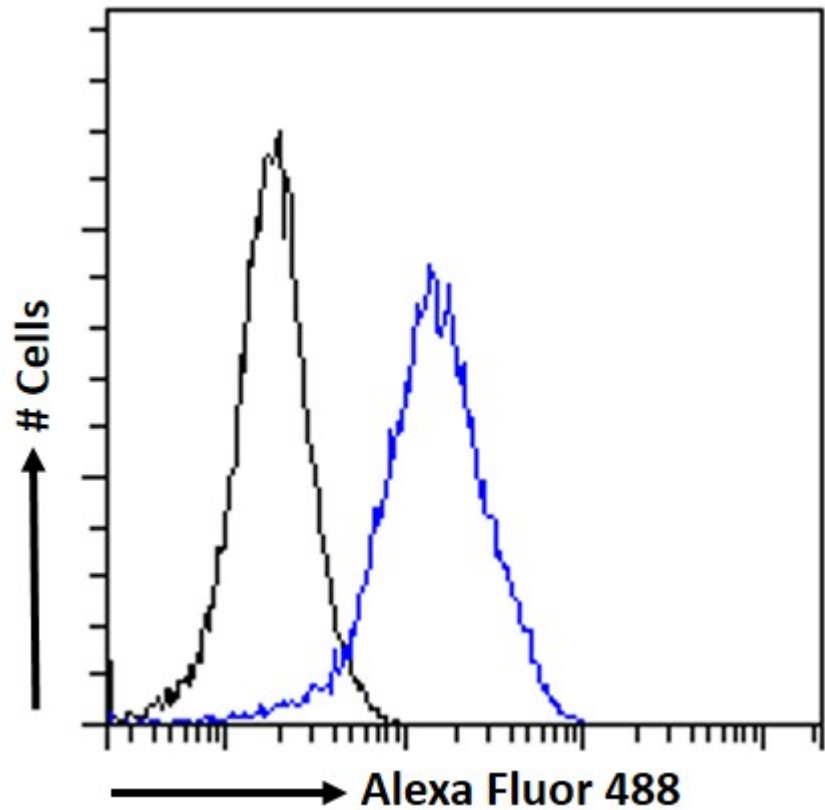
Species Reactivity

Tested: Human, Mouse, Rat, Dog

Expected from sequence similarity: Human, Mouse, Rat, Dog, Pig, Cow



EB06349 (1ug/ml) staining of A431 (A) and HeLa (B), (2ug/ml) HEK293 (C) and (0.1ug/ml) MCF7 (D), NIH3T3 (E), KNRK (F) and MDCK (G) cell lysate (35µg protein in RIPA buffer). Detected by chemiluminescence.



EB06349 Flow cytometric analysis of paraformaldehyde fixed A431 cells (blue line), permeabilized with 0.5% Triton. Primary incubation 1hr (10ug/ml) followed by Alexa Fluor 488 secondary antibody (1ug/ml). IgG control: Unimmunized goat IgG (black line) followed by Alexa Fluor 488 secondary antibody.