

UK Office

Everest Biotech Ltd

Cherwell Innovation Centre
77 Heyford Park
Upper Heyford
Oxfordshire
OX25 5HD
UK

Enquiries:

info@everestbiotech.com

Sales:

sales@everestbiotech.com

Tech support:

support@everestbiotech.com

Tel: +44 (0)1869 238326

www.everestbiotech.com

**Research Use Only. Not for
diagnostic or therapeutic use.**

EB06350 - Goat Anti-ARP1 homolog B Antibody

Size: 100µg specific antibody in 200µl



Target Protein

Principal Names: ACTR1B, ARP1B, CTRN2, ARP1 actin-related protein 1 homolog B, cetractin beta (yeast), PC3, cetractin beta, ARP1, yeast homolog B, ARP1 (actin-related protein 1, yeast) homolog B (cetractin beta), ARP1 actin-related protein 1 homolog B, cetractin beta

Official Symbol: ACTR1B

Accession Number(s): NP_005726.1

Human GeneID(s): [10120](#)

Non-Human GeneID(s): 226977 (mouse)

Important Comments: This epitope was selected to minimise the chance of cross-reactivity with ACTR1A (YEEDGARSIRHKT).

Immunogen

Peptide with sequence C-YEEDGSRAIHRKT, from the C Terminus of the protein sequence according to NP_005726.1.

Please note the [peptide](#) is available for sale.

Purification and Storage

Purified from goat serum by ammonium sulphate precipitation followed by antigen affinity chromatography using the immunizing peptide.

Supplied at 0.5 mg/ml in Tris saline, 0.02% sodium azide, pH7.3 with 0.5% bovine serum albumin.

Aliquot and store at -20°C. Minimize freezing and thawing.

Applications Tested

Peptide ELISA: antibody detection limit dilution 1:128000.

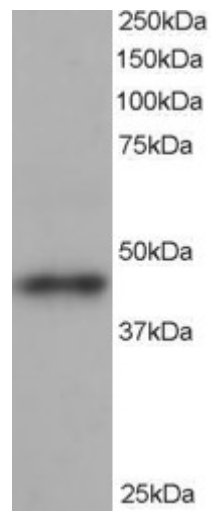
Western blot: Approx 45kDa band observed in human heart and brain lysates (predicted MW of 43kDa according to NP_005726). Recommended for use at 0.5-2µg/ml.

IHC: In paraffin embedded Human Uterus shows fibrillar staining of cytoplasm in endometrial cells. Recommended concentration, 3-5µg/ml.

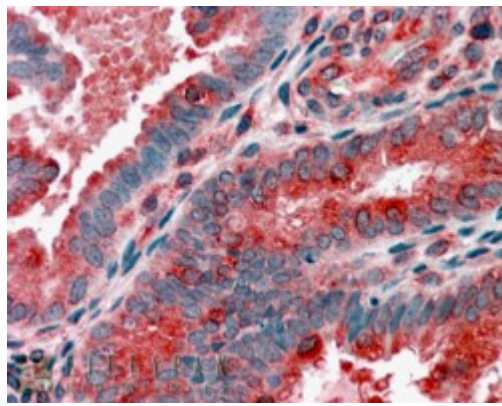
Species Reactivity

Tested: Human

Expected from sequence similarity: Human, Mouse, Rat, Dog, Cow



EB06350 staining (1 μ g/ml) of human heart lysate (RIPA buffer, 35 μ g total protein per lane). Primary incubated for 1 hour. Detected by western blot using chemiluminescence.



EB06350 (3.8 μ g/ml) staining of paraffin embedded Human Uterus. Steamed antigen retrieval with citrate buffer pH 6, AP-staining.