



## UK Office

### Everest Biotech Ltd

Cherwell Innovation Centre  
77 Heyford Park  
Upper Heyford  
Oxfordshire  
OX25 5HD  
UK

Enquiries:

[info@everestbiotech.com](mailto:info@everestbiotech.com)

Sales:

[sales@everestbiotech.com](mailto:sales@everestbiotech.com)

Tech support:

[support@everestbiotech.com](mailto:support@everestbiotech.com)

Tel: +44 (0)1869 238326

Fax: +44 (0)1869 238327

## US Office

### Everest Biotech c/o Abcore

405 Maple Street, Suite A106  
Ramona,  
CA 92065  
USA

Inquiries:

[info@everestbiotech.com](mailto:info@everestbiotech.com)

Sales:

[usasales@everestbiotech.com](mailto:usasales@everestbiotech.com)

Tech support:

[support@everestbiotech.com](mailto:support@everestbiotech.com)

Tel: 888-320-4628 (toll-free)

Fax: 888-841-9041

[www.everestbiotech.com](http://www.everestbiotech.com)

**Research Use Only. Not for  
diagnostic or therapeutic use.**

## EB06350 - Goat Anti-ARP1 homolog B Antibody

Size: 100µg specific antibody in 200µl



### Target Protein

**Principal Names:** ACTR1B, ARP1B, CTRN2, ARP1 actin-related protein 1 homolog B, centractin beta (yeast), PC3, centractin beta, ARP1, yeast homolog B, ARP1 (actin-related protein 1, yeast) homolog B (centractin beta), ARP1 actin-related protein 1 homolog B, centractin beta

**Official Symbol:** ACTR1B

**Accession Number(s):** NP\_005726.1

**Human GeneID(s):** [10120](#)

**Non-Human GeneID(s):** 226977 (mouse)

**Important Comments:** This epitope was selected to minimise the chance of cross-reactivity with ACTR1A (YEEDGARSIRHKT).

### Immunogen

Peptide with sequence C-YEEDGSRAIHRKT, from the C Terminus of the protein sequence according to NP\_005726.1.

Please note the [peptide](#) is available for sale.

### Purification and Storage

Purified from goat serum by ammonium sulphate precipitation followed by antigen affinity chromatography using the immunizing peptide.

Supplied at 0.5 mg/ml in Tris saline, 0.02% sodium azide, pH7.3 with 0.5% bovine serum albumin.

Aliquot and store at -20°C. Minimize freezing and thawing.

### Applications Tested

**Peptide ELISA:** antibody detection limit dilution 1:128000.

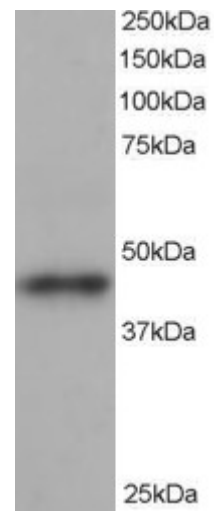
**Western blot:** Approx 45kDa band observed in human heart and brain lysates (predicted MW of 43kDa according to NP\_005726). Recommended for use at 0.5-2µg/ml.

**IHC:** In paraffin embedded Human Uterus shows fibrillar staining of cytoplasm in endometrial cells. Recommended concentration, 3-5µg/ml.

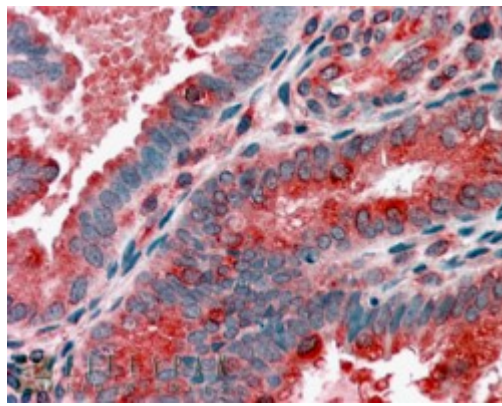
### Species Reactivity

**Tested:** Human

**Expected from sequence similarity:** Human, Mouse, Rat, Dog, Cow



EB06350 staining (1 $\mu$ g/ml) of human heart lysate (RIPA buffer, 35 $\mu$ g total protein per lane). Primary incubated for 1 hour. Detected by western blot using chemiluminescence.



EB06350 (3.8 $\mu$ g/ml) staining of paraffin embedded Human Uterus. Steamed antigen retrieval with citrate buffer pH 6, AP-staining.