

UK Office

Everest Biotech Ltd

Cherwell Innovation Centre
77 Heyford Park
Upper Heyford
Oxfordshire
OX25 5HD
UK

Enquiries:

info@everestbiotech.com

Sales:

sales@everestbiotech.com

Tech support:

support@everestbiotech.com

Tel: +44 (0)1869 238326

www.everestbiotech.com

**Research Use Only. Not for
diagnostic or therapeutic use.**

EB11355 - Goat Anti-ARPC1A Antibody

Size: 100µg specific antibody in 200µl



Target Protein

Principal Names: actin binding protein (Schizosaccharomyces pombe sop2-like), actin related protein 2/3 complex, subunit 1A, 41kDa, actin-related protein 2/3 complex subunit 1A, Arc40, OTTHUMP00000206034, SOP2Hs, SOP2L, SOP2-like protein, ARPC1A

Official Symbol: ARPC1A

Accession Number(s): NP_006400.2; NP_001177925.1

Human GeneID(s): [10552](#)

Non-Human GeneID(s): 56443 (mouse), 81824 (rat)

Important Comments: This antibody is expected to recognize both reported isoforms (NP_006400.2; NP_001177925.1). No cross-reactivity expected with ARPC1B.

Immunogen

Peptide with sequence C-DFKTLESSIQGLR, from the C Terminus of the protein sequence according to NP_006400.2; NP_001177925.1.

Please note the [peptide](#) is available for sale.

Purification and Storage

Purified from goat serum by ammonium sulphate precipitation followed by antigen affinity chromatography using the immunizing peptide.

Supplied at 0.5 mg/ml in Tris saline, 0.02% sodium azide, pH7.3 with 0.5% bovine serum albumin.

Aliquot and store at -20°C. Minimize freezing and thawing.

Applications Tested

Peptide ELISA: antibody detection limit dilution 1:64000.

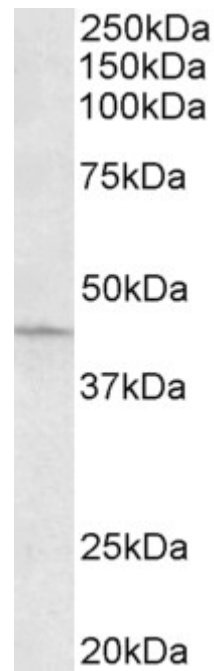
Western blot: Approx 45kDa band observed in lysates of cell line HeLa (calculated MW of 41.6kDa according to NP_006400.2). Approx 37kDa band observed in fetal Mouse Brain and adult Rat Brain lysates (calculated MW of 41.6kDa according to Mouse NP_062741.1). Recommended concentration: 0.1-0.3µg/ml.

IHC: Paraffin embedded Human Heart. Recommended concentration: 5µg/ml.

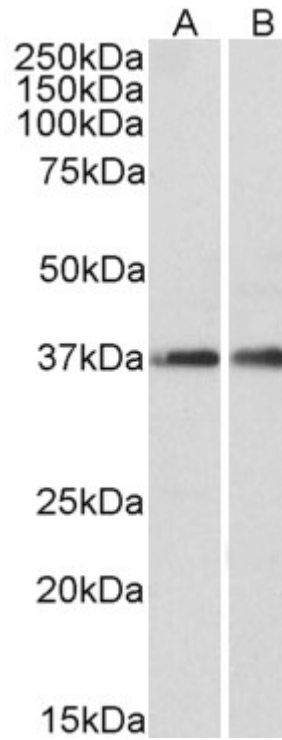
Species Reactivity

Tested: Human, Mouse, Rat

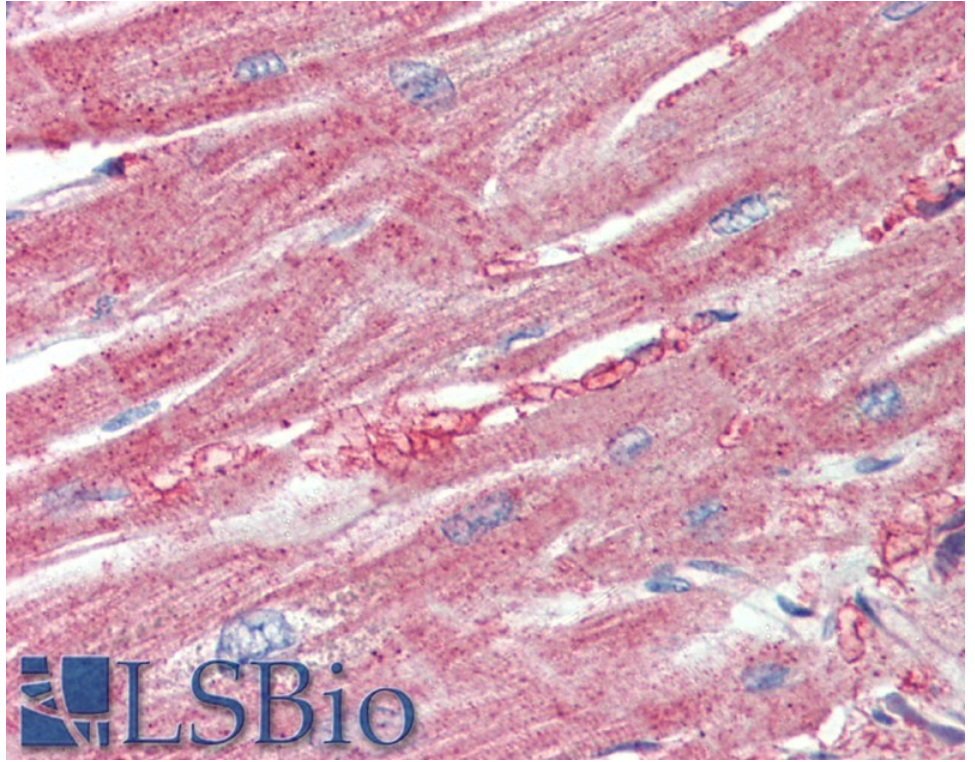
Expected from sequence similarity: Human, Mouse, Rat, Pig, Cow



EB11355 (0.3 μ g/ml) staining of HeLa lysate (35 μ g protein in RIPA buffer). Primary incubation was 1 hour. Detected by chemiluminescence.



EB11355 (0.1 μ g/ml) staining of fetal Mouse Brain (A) and adult Rat Brain (B) lysates (35 μ g protein in RIPA buffer). Primary incubation was 1 hour. Detected by chemiluminescence.



EB11355 (5µg/ml) staining of paraffin embedded Human Heart. Steamed antigen retrieval with citrate buffer pH 6, AP-staining.