

UK Office

Everest Biotech Ltd

Cherwell Innovation Centre
77 Heyford Park
Upper Heyford
Oxfordshire
OX25 5HD
UK

Enquiries:

info@everestbiotech.com

Sales:

sales@everestbiotech.com

Tech support:

support@everestbiotech.com

Tel: +44 (0)1869 238326

www.everestbiotech.com

**Research Use Only. Not for
diagnostic or therapeutic use.**

EB08059 - Goat Anti-Arylsulfatase B Antibody

Size: 100µg specific antibody in 200µl



Target Protein

Principal Names: ARSB, arylsulfatase B, ASB, G4S, MPS6,
N-acetylgalactosamine-4-sulfatase

Official Symbol: ARSB

Accession Number(s): NP_000037.2; NP_942002.1

Human GeneID(s): [411](#)

Important Comments: This antibody is expected to recognise both reported isoforms (NP_000037.2; NP_942002.1).

Immunogen

Peptide with sequence C-KLARGHTNGTKPLD, from the internal region of the protein sequence according to NP_000037.2; NP_942002.1.

Please note the [peptide](#) is available for sale.

Purification and Storage

Purified from goat serum by ammonium sulphate precipitation followed by antigen affinity chromatography using the immunizing peptide.

Supplied at 0.5 mg/ml in Tris saline, 0.02% sodium azide, pH7.3 with 0.5% bovine serum albumin.

Aliquot and store at -20°C. Minimize freezing and thawing.

Applications Tested

Peptide ELISA: antibody detection limit dilution 1:64000.

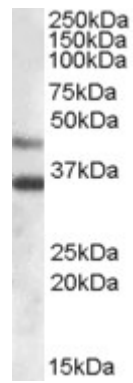
Western blot: Approx 45kDa band observed in Human Heart lysates (calculated MW of 46.0kDa according to NP_942002.1). Recommended concentration: 0.03-0.1µg/ml. An additional band of unknown identity was also consistently observed at 35kDa. This band was successfully blocked by incubation with the immunising peptide. We would appreciate any feedback from people in the field - have any such results been reported with other antibodies/lysates? Have any further splice variants/modified forms been reported?

IHC: In paraffin embedded Human Skeletal Muscle shows striated pattern staining of majority of muscular fibres. Recommended concentration, 5-10µg/ml.

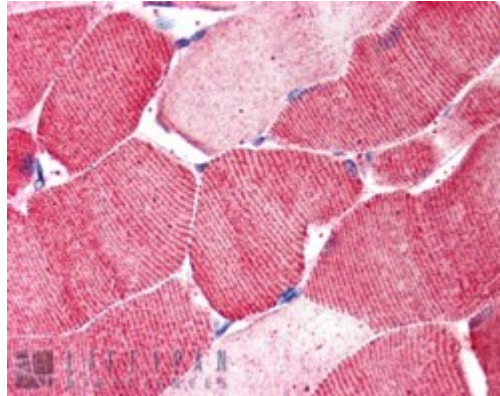
Species Reactivity

Tested: Human

Expected from sequence similarity: Human



EB08059 (0.03 μ g/ml) staining of Human Heart lysate (35 μ g protein in RIPA buffer). Primary incubation was 1 hour. Detected by chemiluminescence.



EB08059 (5 μ g/ml) staining of paraffin embedded Human Skeletal Muscle. Steamed antigen retrieval with citrate buffer pH 6, AP-staining.