



UK Office

Everest Biotech Ltd

Cherwell Innovation Centre
77 Heyford Park
Upper Heyford
Oxfordshire
OX25 5HD
UK

Enquiries:

info@everestbiotech.com

Sales:

sales@everestbiotech.com

Tech support:

support@everestbiotech.com

Tel: +44 (0)1869 238326

Fax: +44 (0)1869 238327

US Office

Everest Biotech c/o Abcore

405 Maple Street, Suite A106
Ramona,
CA 92065
USA

Inquiries:

info@everestbiotech.com

Sales:

usasales@everestbiotech.com

Tech support:

support@everestbiotech.com

Tel: 888-320-4628 (toll-free)

Fax: 888-841-9041

www.everestbiotech.com

**Research Use Only. Not for
diagnostic or therapeutic use.**

EB05291-T - Goat Anti-ASC / TMS1 Antibody - Trial

Size: 20µg specific antibody in 40µl



Target Protein

Principal Names: PYCARD, ASC, TMS1, PYD and CARD domain containing, CARD5, MGC10332, TMS, apoptosis-associated speck-like protein containing a CARD, caspase recruitment domain protein 5, target of methylation-induced silencing-1, TMS-1

Official Symbol: PYCARD

Accession Number(s): NP_037390.2; NP_660183.1

Human GeneID(s): [29108](#)

Important Comments: This antibody is expected to recognise both reported isoforms (NP_037390.2 and NP_660183.1).

Immunogen

Peptide with sequence C-RESQSYLVEDLERS, from the C Terminus of the protein sequence according to NP_037390.2; NP_660183.1.

Please note the [peptide](#) is available for sale.

Purification and Storage

Purified from goat serum by ammonium sulphate precipitation followed by antigen affinity chromatography using the immunizing peptide.

Supplied at 0.5 mg/ml in Tris saline, 0.02% sodium azide, pH7.3 with 0.5% bovine serum albumin.

Aliquot and store at -20°C. Minimize freezing and thawing.

Applications Tested

Peptide ELISA: antibody detection limit dilution 1:16000.

Western blot: Approx 19kDa band observed in lysates of cell line HeLa (calculated MW of 20.0kDa according to NP_660183.1). Recommended concentration: 0.2-0.6µg/ml.

Primary incubation was 1 hour.

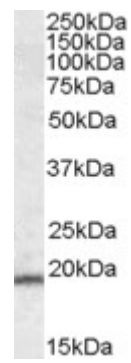
IHC: In paraffin embedded Human Liver shows staining of sinusoidal lining cells.

Recommended concentration: 4-6µg/ml.

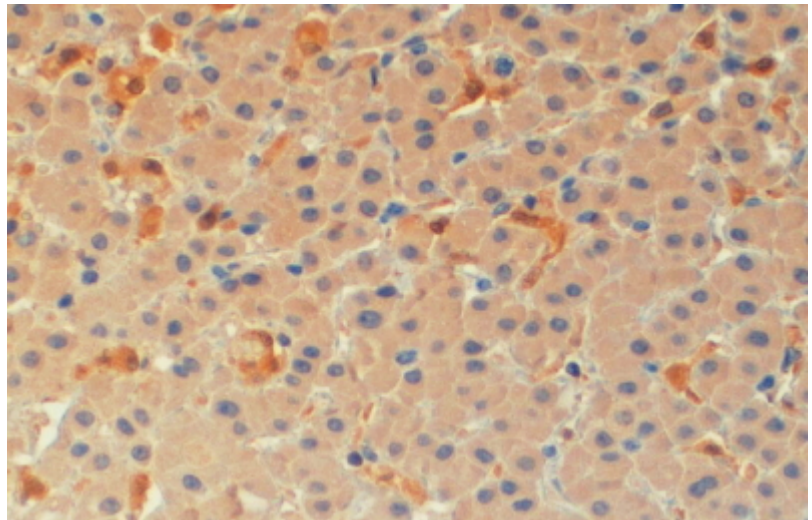
Species Reactivity

Tested: Human

Expected from sequence similarity: Human



EB05291 (0.2 μ g/ml) staining of HeLa lysate (35 μ g protein in RIPA buffer). Detected by chemiluminescence.



EB05291 (4 μ g/ml) staining of paraffin embedded Human Liver. Steamed antigen retrieval with citrate buffer pH 6, HRP-staining.