



## UK Office

### Everest Biotech Ltd

Cherwell Innovation Centre  
77 Heyford Park  
Upper Heyford  
Oxfordshire  
OX25 5HD  
UK

Enquiries:

[info@everestbiotech.com](mailto:info@everestbiotech.com)

Sales:

[sales@everestbiotech.com](mailto:sales@everestbiotech.com)

Tech support:

[support@everestbiotech.com](mailto:support@everestbiotech.com)

Tel: +44 (0)1869 238326

Fax: +44 (0)1869 238327

## US Office

### Everest Biotech c/o Abcore

405 Maple Street, Suite A106  
Ramona,  
CA 92065  
USA

Inquiries:

[info@everestbiotech.com](mailto:info@everestbiotech.com)

Sales:

[usasales@everestbiotech.com](mailto:usasales@everestbiotech.com)

Tech support:

[support@everestbiotech.com](mailto:support@everestbiotech.com)

Tel: 888-320-4628 (toll-free)

Fax: 888-841-9041

[www.everestbiotech.com](http://www.everestbiotech.com)

**Research Use Only. Not for  
diagnostic or therapeutic use.**

## EB05291 - Goat Anti-ASC / TMS1 Antibody

Size: 100µg specific antibody in 200µl



### Target Protein

**Principal Names:** PYCARD, ASC, TMS1, PYD and CARD domain containing, CARD5, MGC10332, TMS, apoptosis-associated speck-like protein containing a CARD, caspase recruitment domain protein 5, target of methylation-induced silencing-1, TMS-1

**Official Symbol:** PYCARD

**Accession Number(s):** NP\_037390.2; NP\_660183.1

**Human GeneID(s):** [29108](#)

**Important Comments:** This antibody is expected to recognise both reported isoforms (NP\_037390.2 and NP\_660183.1).

### Immunogen

Peptide with sequence C-RESQSYLVEDLERS, from the C Terminus of the protein sequence according to NP\_037390.2; NP\_660183.1.

Please note the [peptide](#) is available for sale.

### Purification and Storage

Purified from goat serum by ammonium sulphate precipitation followed by antigen affinity chromatography using the immunizing peptide.

Supplied at 0.5 mg/ml in Tris saline, 0.02% sodium azide, pH7.3 with 0.5% bovine serum albumin.

Aliquot and store at -20°C. Minimize freezing and thawing.

### Applications Tested

**Peptide ELISA:** antibody detection limit dilution 1:16000.

**Western blot:** Approx 19kDa band observed in lysates of cell line HeLa (calculated MW of 20.0kDa according to NP\_660183.1). Recommended concentration: 0.2-0.6µg/ml.

Primary incubation was 1 hour.

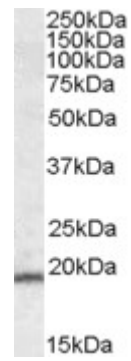
**IHC:** In paraffin embedded Human Liver shows staining of sinusoidal lining cells.

Recommended concentration: 4-6µg/ml.

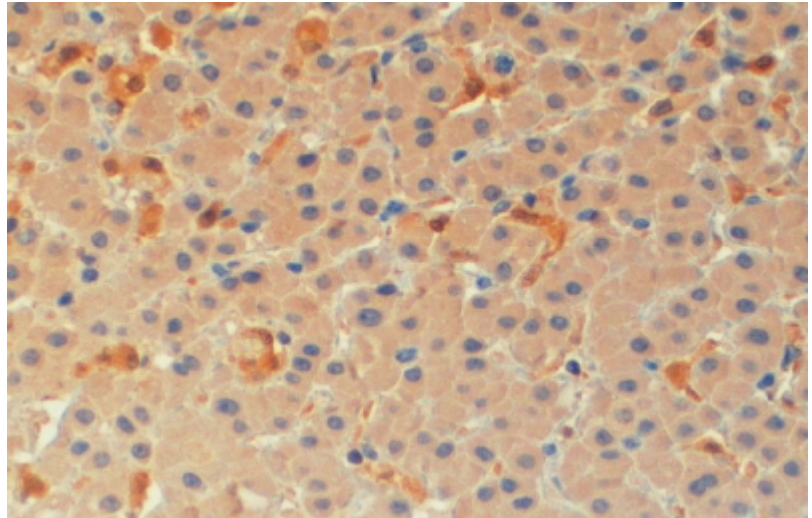
### Species Reactivity

**Tested:** Human

**Expected from sequence similarity:** Human



EB05291 (0.2µg/ml) staining of HeLa lysate (35µg protein in RIPA buffer). Detected by chemiluminescence.



EB05291 (4µg/ml) staining of paraffin embedded Human Liver. Steamed antigen retrieval with citrate buffer pH 6, HRP-staining.