

## UK Office

### Everest Biotech Ltd

Cherwell Innovation Centre  
77 Heyford Park  
Upper Heyford  
Oxfordshire  
OX25 5HD  
UK

Enquiries:

[info@everestbiotech.com](mailto:info@everestbiotech.com)

Sales:

[sales@everestbiotech.com](mailto:sales@everestbiotech.com)

Tech support:

[support@everestbiotech.com](mailto:support@everestbiotech.com)

Tel: +44 (0)1869 238326

[www.everestbiotech.com](http://www.everestbiotech.com)

**Research Use Only. Not for  
diagnostic or therapeutic use.**

## EB12072 - Goat Anti-ASCL1 (aa79-91) Antibody

Size: 100µg specific antibody in 200µl



### Target Protein

**Principal Names:** ASCL1, achaete-scute complex homolog 1 (Drosophila), ASH1, HASH1, MASH1, bHLHa46, ASH-1, achaete scute protein, achaete-scute complex-like 1, achaete-scute homolog 1, class A basic helix-loop-helix protein 46

**Official Symbol:** ASCL1

**Accession Number(s):** NP\_004307.2

**Human GeneID(s):** [429](#)

**Non-Human GeneID(s):** 17172 (mouse), 64186 (rat)

### Immunogen

Peptide with sequence C-HKSAPKQVKRQRS, from the internal region of the protein sequence according to NP\_004307.2.

Please note the [peptide](#) is available for sale.

### Purification and Storage

Purified from goat serum by ammonium sulphate precipitation followed by antigen affinity chromatography using the immunizing peptide.

Supplied at 0.5 mg/ml in Tris saline, 0.02% sodium azide, pH7.3 with 0.5% bovine serum albumin.

Aliquot and store at -20°C. Minimize freezing and thawing.

### Applications Tested

**Peptide ELISA:** antibody detection limit dilution 1:32000.

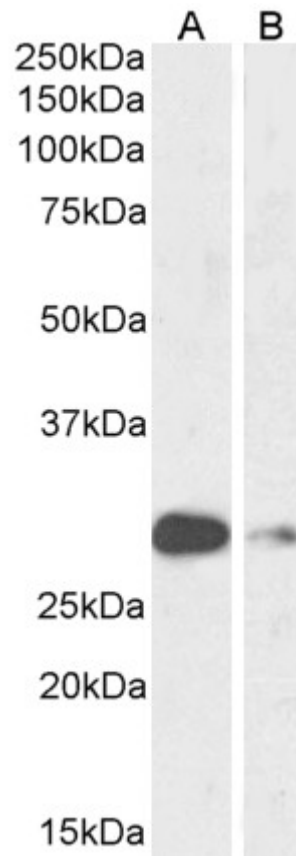
**Western blot:** Approx 28kDa band observed in Mouse and Rat Lung lysates (calculated MW of 24.7kDa according to Mouse NP\_032579.2 and 24.9kDa according to Rat NP\_071779) . Recommended concentration: 0.3-1µg/ml.

**Immunofluorescence:** Strong expression of the protein seen in the nuclei and cytoplasm of MCF7 and U2OS cells. Recommended concentration: 10µg/ml.

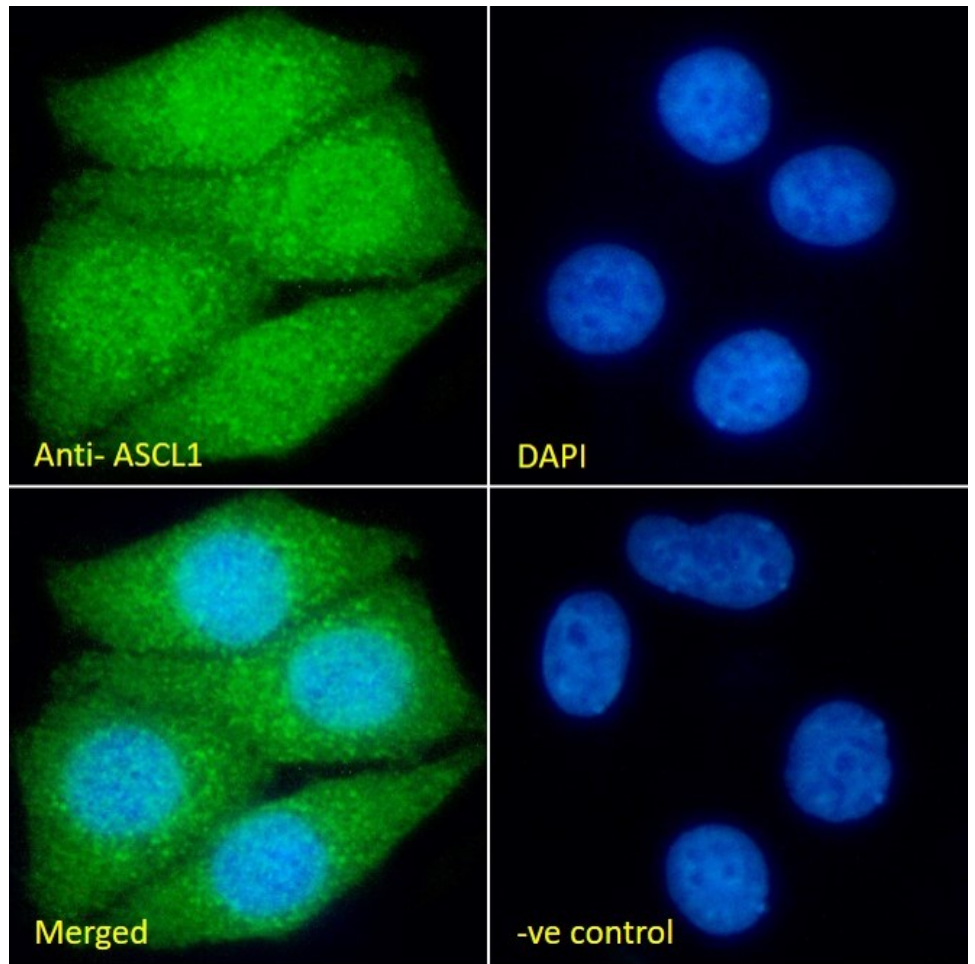
### Species Reactivity

**Tested:** Human, Mouse, Rat

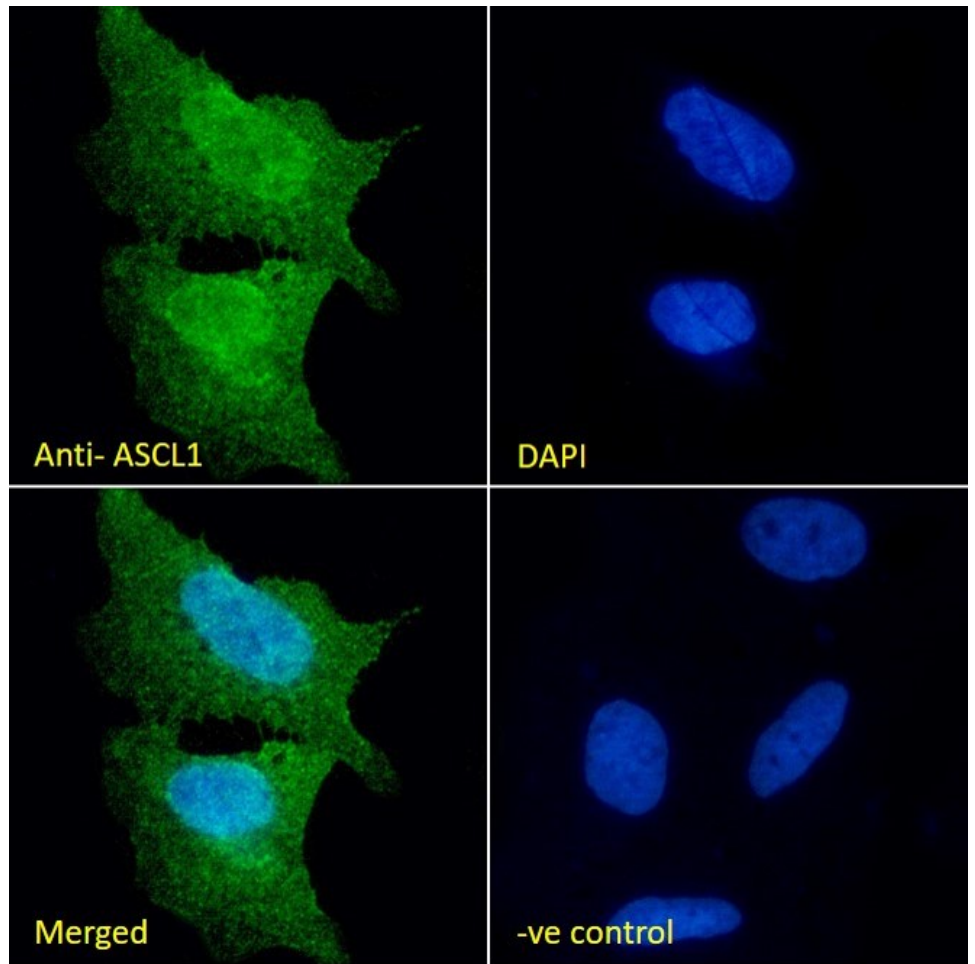
**Expected from sequence similarity:** Human, Cow, Mouse, Rat, Dog



EB12072 (1 $\mu$ g/ml) staining of Mouse (A) and Rat (B) Lung lysate (35 $\mu$ g protein in RIPA buffer). Primary incubation was 1 hour. Detected by chemiluminescence



EB12072 Immunofluorescence analysis of paraformaldehyde fixed MCF7 cells, permeabilized with 0.15% Triton. Primary incubation 1hr (10ug/ml) followed by Alexa Fluor 488 secondary antibody (2ug/ml), showing nuclear and cytoplasmic staining. The nuclear stain is DAPI (blue). Negative control: Unimmunized goat IgG (10ug/ml) followed by Alexa Fluor 488 secondary antibody (2ug/ml).



EB12072 Immunofluorescence analysis of paraformaldehyde fixed U2OS cells, permeabilized with 0.15% Triton. Primary incubation 1hr (10ug/ml) followed by Alexa Fluor 488 secondary antibody (2ug/ml), showing nuclear and cytoplasmic staining. The nuclear stain is DAPI (blue). Negative control: Unimmunized goat IgG (10ug/ml) followed by Alexa Fluor 488 secondary antibody (2ug/ml).