



## International Office

### Everest Biotech Ltd

Vector Laboratories, Inc.  
6737 Mowry Ave  
Newark, CA 94560  
United States

Customer Service:

[customerservice@vectorlabs.com](mailto:customerservice@vectorlabs.com)

Technical Service:

[technical@vectorlabs.com](mailto:technical@vectorlabs.com)

Tel: +1 (800) 227-6666

[www.everestbiotech.com](http://www.everestbiotech.com)

**Research Use Only. Not for  
diagnostic or therapeutic use.**

## EB10633 - Goat Anti-Ascl3 (mouse) Antibody

Size: 100µg specific antibody in 200µl



### Target Protein

**Principal Names:** Ascl3, achaete-scute complex homolog 3 (Drosophila), MGC129412, MGC129413, Sgn1, bHLHa42, ASH-3, ICRFP703B1614Q5.4, ICRFP703N2430Q5.4, achaete-scute homolog 3, bHLH transcriptional regulator Sgn-1, mASH-3, mASH3

**Official Symbol:** Ascl3

**Accession Number(s):** NP\_064435.1

**Human GeneID(s):** [56676](#)

**Non-Human GeneID(s):** 56787 (mouse)

### Immunogen

Peptide with sequence C-HLPEDYLEKRLSK, from the internal region of the protein sequence according to NP\_064435.1.

Please note the [peptide](#) is available for sale.

### Purification and Storage

Purified from goat serum by ammonium sulphate precipitation followed by antigen affinity chromatography using the immunizing peptide.

Supplied at 0.5 mg/ml in Tris saline, 0.02% sodium azide, pH7.3 with 0.5% bovine serum albumin.

Aliquot and store at -20°C. Minimize freezing and thawing.

### Applications Tested

**Peptide ELISA:** antibody detection limit dilution 1:8000.

**Western blot:** Approx 23kDa band observed in Mouse Liver lysates (calculated MW of 20.2kDa according to NP\_064435.1). Recommended concentration: 0.1-0.3µg/ml. Primary incubation was 1 hour.

**IHC:** Paraffin embedded Human Brain (Cortex). Recommended concentration: 3.75µg/ml.

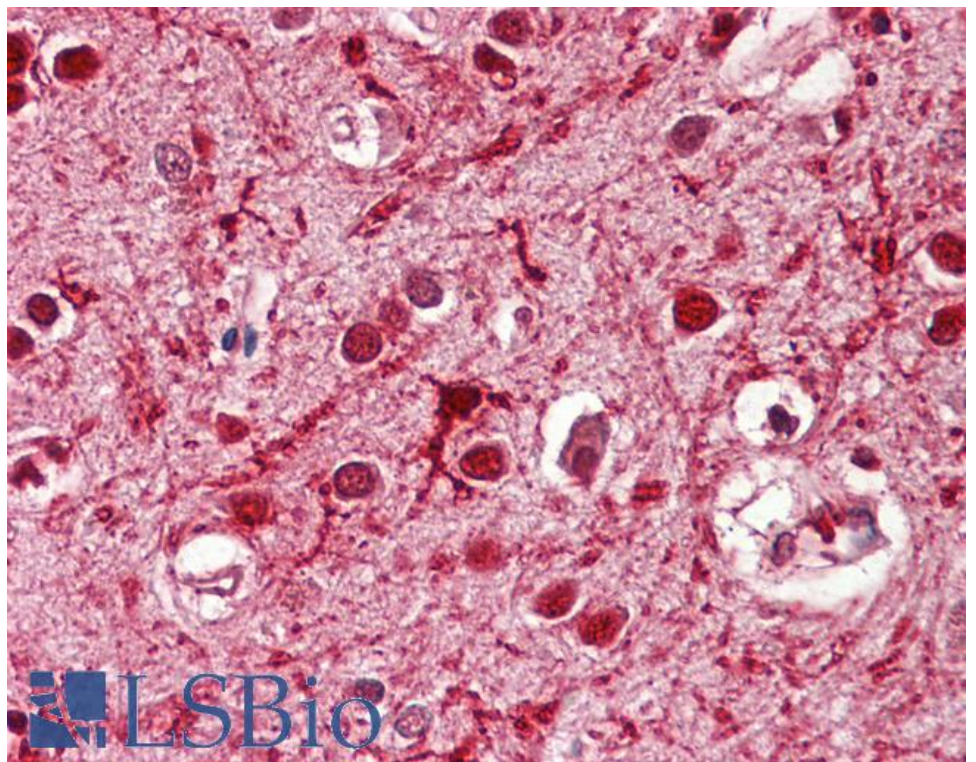
### Species Reactivity

**Tested:** Human, Mouse

**Expected from sequence similarity:** Human, Mouse, Cow



EB10633 (0.1 $\mu$ g/ml) staining of Mouse Liver lysate (35 $\mu$ g protein in RIPA buffer). Detected by chemiluminescence.



EB10633 (3.75 $\mu$ g/ml) staining of paraffin embedded Human Cortex. Steamed antigen retrieval with citrate buffer pH 6, AP-staining.