



UK Office

Everest Biotech Ltd

Cherwell Innovation Centre
77 Heyford Park
Upper Heyford
Oxfordshire
OX25 5HD
UK

Enquiries:

info@everestbiotech.com

Sales:

sales@everestbiotech.com

Tech support:

support@everestbiotech.com

Tel: +44 (0)1869 238326

Fax: +44 (0)1869 238327

US Office

Everest Biotech c/o Abcore

405 Maple Street, Suite A106
Ramona,
CA 92065
USA

Inquiries:

info@everestbiotech.com

Sales:

usasales@everestbiotech.com

Tech support:

support@everestbiotech.com

Tel: 888-320-4628 (toll-free)

Fax: 888-841-9041

www.everestbiotech.com

**Research Use Only. Not for
diagnostic or therapeutic use.**

EB10633 - Goat Anti-Ascl3 (mouse) Antibody

Size: 100µg specific antibody in 200µl



Target Protein

Principal Names: Ascl3, achaete-scute complex homolog 3 (Drosophila), MGC129412, MGC129413, Sgn1, bHLHa42, ASH-3, ICRFP703B1614Q5.4, ICRFP703N2430Q5.4, achaete-scute homolog 3, bHLH transcriptional regulator Sgn-1, mASH-3, mASH3

Official Symbol: Ascl3

Accession Number(s): NP_064435.1

Human GeneID(s): [56676](#)

Non-Human GeneID(s): 56787 (mouse)

Immunogen

Peptide with sequence C-HLPEDYLEKRLSK, from the internal region of the protein sequence according to NP_064435.1.

Please note the [peptide](#) is available for sale.

Purification and Storage

Purified from goat serum by ammonium sulphate precipitation followed by antigen affinity chromatography using the immunizing peptide.

Supplied at 0.5 mg/ml in Tris saline, 0.02% sodium azide, pH7.3 with 0.5% bovine serum albumin.

Aliquot and store at -20°C. Minimize freezing and thawing.

Applications Tested

Peptide ELISA: antibody detection limit dilution 1:8000.

Western blot: Approx 23kDa band observed in Mouse Liver lysates (calculated MW of 20.2kDa according to NP_064435.1). Recommended concentration: 0.1-0.3µg/ml. Primary incubation was 1 hour.

IHC: Paraffin embedded Human Brain (Cortex). Recommended concentration: 3.75µg/ml.

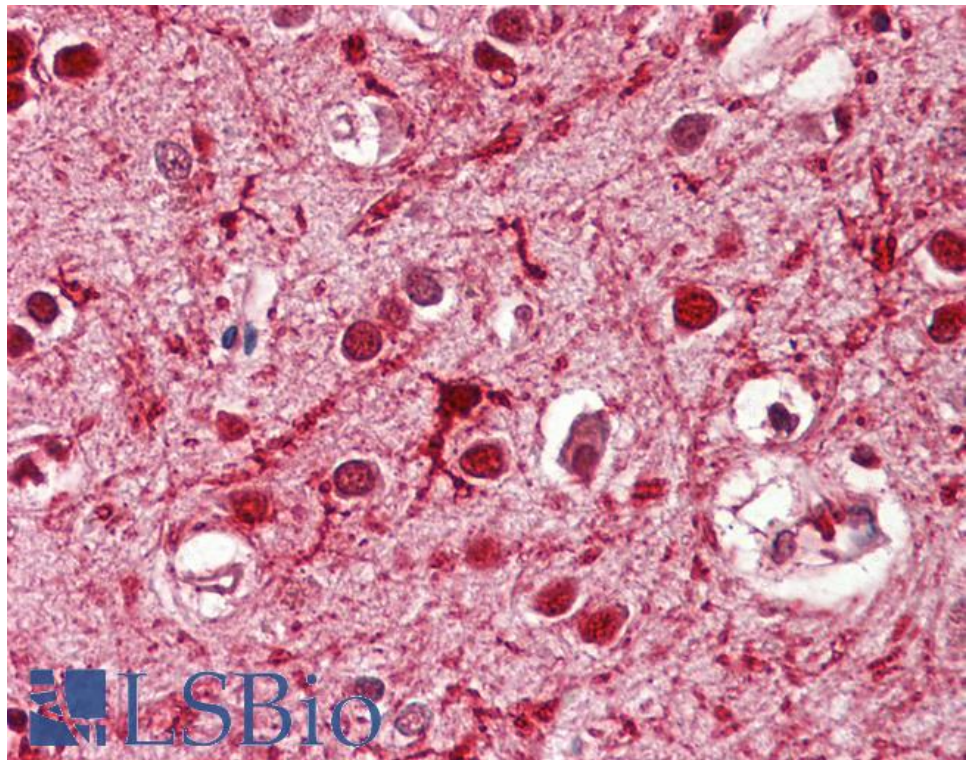
Species Reactivity

Tested: Human, Mouse

Expected from sequence similarity: Human, Mouse, Cow



EB10633 (0.1 μ g/ml) staining of Mouse Liver lysate (35 μ g protein in RIPA buffer). Detected by chemiluminescence.



EB10633 (3.75 μ g/ml) staining of paraffin embedded Human Cortex. Steamed antigen retrieval with citrate buffer pH 6, AP-staining.