



## UK Office

### Everest Biotech Ltd

Cherwell Innovation Centre  
77 Heyford Park  
Upper Heyford  
Oxfordshire  
OX25 5HD  
UK

Enquiries:

[info@everestbiotech.com](mailto:info@everestbiotech.com)

Sales:

[sales@everestbiotech.com](mailto:sales@everestbiotech.com)

Tech support:

[support@everestbiotech.com](mailto:support@everestbiotech.com)

Tel: +44 (0)1869 238326

[www.everestbiotech.com](http://www.everestbiotech.com)

**Research Use Only. Not for  
diagnostic or therapeutic use.**

## EB08162 - Goat Anti-ASF1A Antibody

Size: 100µg specific antibody in 200µl



### Target Protein

**Principal Names:** ASF1A, ASF1 anti-silencing function 1 homolog A (*S. cerevisiae*), RP3-329L24.1, CGI-98, CIA, DKFZP547E2110, HSPC146, ASF1 anti-silencing function 1 homolog A, CCG1-interacting factor A, anti-silencing function 1A

**Official Symbol:** ASF1A

**Accession Number(s):** NP\_054753.1

**Human GeneID(s):** [25842](#)

**Non-Human GeneID(s):** 66403 (mouse), 294408 (rat)

### Immunogen

Peptide with sequence C-ENSLNVMLESH, from the C Terminus of the protein sequence according to NP\_054753.1.

Please note the [peptide](#) is available for sale.

### Purification and Storage

Purified from goat serum by ammonium sulphate precipitation followed by antigen affinity chromatography using the immunizing peptide.

Supplied at 0.5 mg/ml in Tris saline, 0.02% sodium azide, pH7.3 with 0.5% bovine serum albumin.

Aliquot and store at -20°C. Minimize freezing and thawing.

### Applications Tested

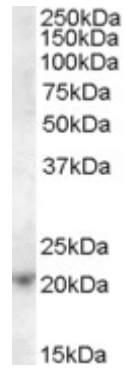
**Peptide ELISA:** antibody detection limit dilution 1:32000.

**Western blot:** Approx 21kDa band observed in lysates of cell line Jurkat (calculated MW of 23.0kDa according to NP\_054753.1). Recommended concentration: 1-3µg/ml.

### Species Reactivity

**Tested:** Human

**Expected from sequence similarity:** Human, Mouse, Rat, Dog



EB08162 (1 $\mu$ g/ml) staining of Jurkat cell lysate (35 $\mu$ g protein in RIPA buffer). Primary incubation was 1 hour.  
Detected by chemiluminescence.