

## UK Office

### Everest Biotech Ltd

Cherwell Innovation Centre  
77 Heyford Park  
Upper Heyford  
Oxfordshire  
OX25 5HD  
UK

Enquiries:

[info@everestbiotech.com](mailto:info@everestbiotech.com)

Sales:

[sales@everestbiotech.com](mailto:sales@everestbiotech.com)

Tech support:

[support@everestbiotech.com](mailto:support@everestbiotech.com)

Tel: +44 (0)1869 238326

[www.everestbiotech.com](http://www.everestbiotech.com)

**Research Use Only. Not for  
diagnostic or therapeutic use.**

## EB12627 - Goat Anti-ASIC1 Antibody

Size: 100µg specific antibody in 200µl



### Target Protein

**Principal Names:** ASIC1, acid-sensing (proton-gated) ion channel 1, ACCN2, ASIC, BNaC2, Cation channel, amiloride-sensitive, neuronal, 2, acid-sensing ion channel 1, acid-sensing ion channel 1a protein, amiloride-sensitive cation channel 2, neuronal, brain sodium channel 2

**Official Symbol:** ASIC1

**Accession Number(s):** NP\_064423.2; NP\_001086.2; NP\_001243759.1

**Human GeneID(s):** [41](#)

**Non-Human GeneID(s):** 11419 (mouse), 79123 (rat)

**Important Comments:** This antibody is expected to recognize all reported isoforms (NP\_064423.2; NP\_001086.2; NP\_001243759.1).

### Immunogen

Peptide with sequence C-NILPHHPARGT, from the C Terminus of the protein sequence according to NP\_064423.2; NP\_001086.2; NP\_001243759.1.

Please note the [peptide](#) is available for sale.

### Purification and Storage

Purified from goat serum by ammonium sulphate precipitation followed by antigen affinity chromatography using the immunizing peptide.

Supplied at 0.5 mg/ml in Tris saline, 0.02% sodium azide, pH7.3 with 0.5% bovine serum albumin.

Aliquot and store at -20°C. Minimize freezing and thawing.

### Applications Tested

**Peptide ELISA:** antibody detection limit dilution 1:128000.

**Western blot:** Approx 70kDa band observed in Mouse fetal Brain lysates (calculated MW of 64.8kDa according to NP\_064423.2). Recommended concentration: 0.3-1µg/ml.

Primary incubation was 1 hour.

**IHC:** Paraffin embedded Human Brain (Cortex) and Pancreas. Recommended concentration: 5µg/ml.

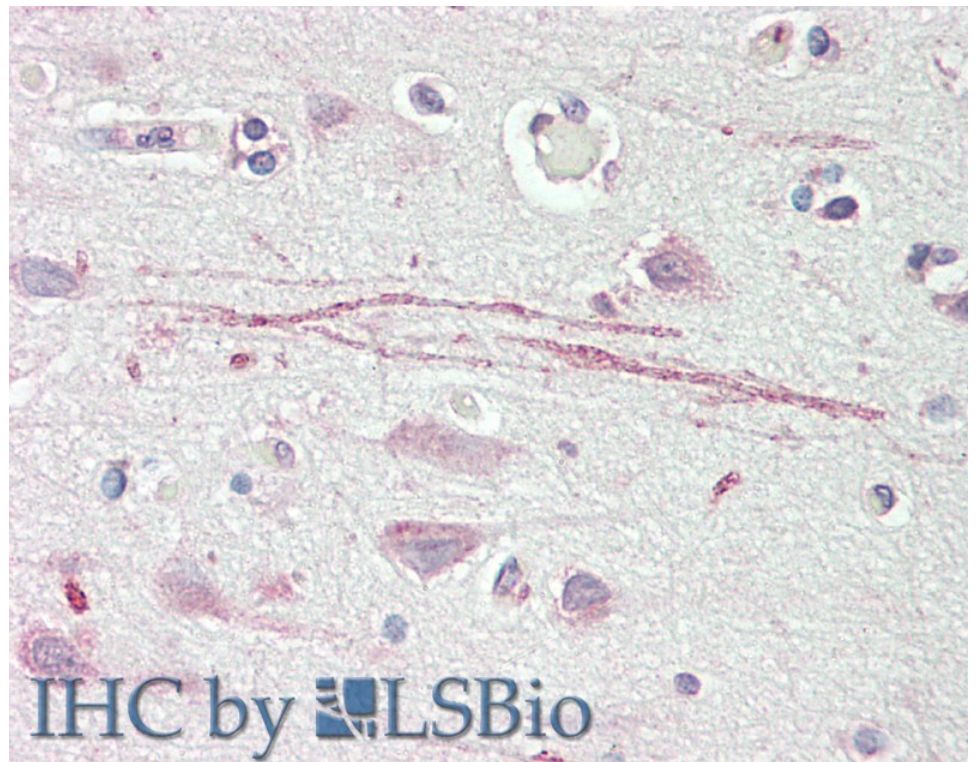
### Species Reactivity

**Tested:** Human, Mouse

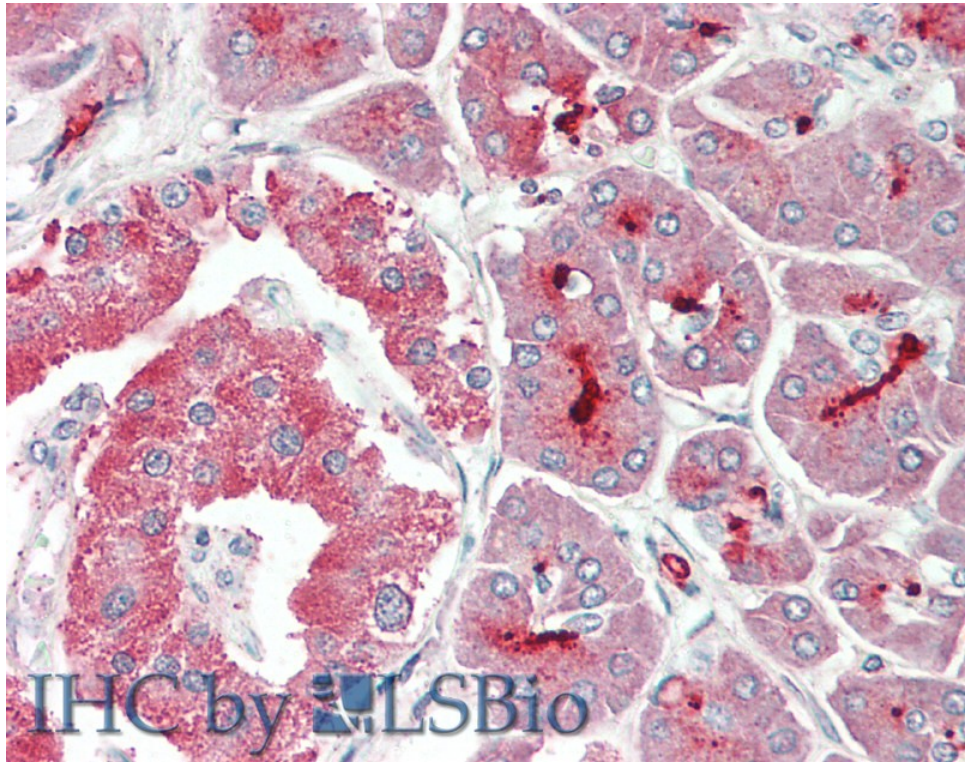
**Expected from sequence similarity:** Human, Mouse, Rat, Dog, Pig, Cow



EB12627 (0.3 $\mu$ g/ml) staining of Mouse fetal Brain lysate (35 $\mu$ g protein in RIPA buffer). Detected by chemiluminescence.



EB12627 (5 $\mu$ g/ml) staining of paraffin embedded Human Cortex. Steamed antigen retrieval with citrate buffer pH 6, AP-staining.



EB12627 (5µg/ml) staining of paraffin embedded Human Pancreas. Steamed antigen retrieval with citrate buffer pH 6, AP-staining.