



## UK Office

### Everest Biotech Ltd

Cherwell Innovation Centre  
77 Heyford Park  
Upper Heyford  
Oxfordshire  
OX25 5HD  
UK

Enquiries:

[info@everestbiotech.com](mailto:info@everestbiotech.com)

Sales:

[sales@everestbiotech.com](mailto:sales@everestbiotech.com)

Tech support:

[support@everestbiotech.com](mailto:support@everestbiotech.com)

Tel: +44 (0)1869 238326

Fax: +44 (0)1869 238327

## US Office

### Everest Biotech c/o Abcore

405 Maple Street, Suite A106  
Ramona,  
CA 92065  
USA

Inquiries:

[info@everestbiotech.com](mailto:info@everestbiotech.com)

Sales:

[usasales@everestbiotech.com](mailto:usasales@everestbiotech.com)

Tech support:

[support@everestbiotech.com](mailto:support@everestbiotech.com)

Tel: 888-320-4628 (toll-free)

Fax: 888-841-9041

[www.everestbiotech.com](http://www.everestbiotech.com)

**Research Use Only. Not for  
diagnostic or therapeutic use.**

## EB10714 - Goat Anti-Aspa (mouse) Antibody

Size: 100µg specific antibody in 200µl



### Target Protein

**Principal Names:** Aspa, aspartoacylase, RP23-213I10.1, Acy-2., Acy2, nur7, OTTMUSP00000006437, aminoacylase 2, aminoacylase-2, small lethargic

**Official Symbol:** Aspa

**Accession Number(s):** NP\_075602.2

**Non-Human GeneID(s):** 11484 (mouse), 79251 (rat)

### Immunogen

Peptide with sequence C-TLSAKSIRSTLH, from the C Terminus of the protein sequence according to NP\_075602.2.

Please note the [peptide](#) is available for sale.

### Purification and Storage

Purified from goat serum by ammonium sulphate precipitation followed by antigen affinity chromatography using the immunizing peptide.

Supplied at 0.5 mg/ml in Tris saline, 0.02% sodium azide, pH7.3 with 0.5% bovine serum albumin.

Aliquot and store at -20°C. Minimize freezing and thawing.

### Applications Tested

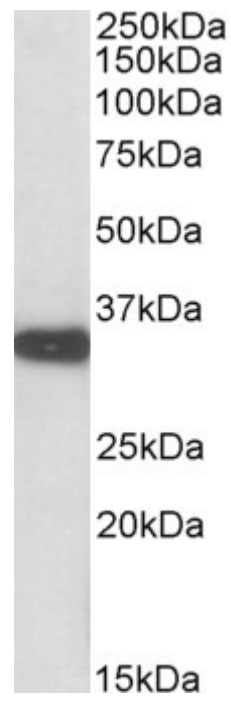
**Peptide ELISA:** antibody detection limit dilution 1:8000.

**Western blot:** Approx 35kDa band observed in Mouse and Rat Kidney lysates (calculated MW of 35.3kDa according to NP\_075602.2). Recommended concentration: 0.01-0.03µg/ml.

### Species Reactivity

**Tested:** Mouse, Rat

**Expected from sequence similarity:** Mouse, Rat



EB10714 (0.01 $\mu$ g/ml) staining of Mouse Kidney lysate (35 $\mu$ g protein in RIPA buffer). Primary incubation was 1 hour. Detected by chemiluminescence.