



## UK Office

### Everest Biotech Ltd

Cherwell Innovation Centre  
77 Heyford Park  
Upper Heyford  
Oxfordshire  
OX25 5HD  
UK

Enquiries:

[info@everestbiotech.com](mailto:info@everestbiotech.com)

Sales:

[sales@everestbiotech.com](mailto:sales@everestbiotech.com)

Tech support:

[support@everestbiotech.com](mailto:support@everestbiotech.com)

Tel: +44 (0)1869 238326

Fax: +44 (0)1869 238327

## US Office

### Everest Biotech c/o Abcore

405 Maple Street, Suite A106  
Ramona,  
CA 92065  
USA

Inquiries:

[info@everestbiotech.com](mailto:info@everestbiotech.com)

Sales:

[usasales@everestbiotech.com](mailto:usasales@everestbiotech.com)

Tech support:

[support@everestbiotech.com](mailto:support@everestbiotech.com)

Tel: 888-320-4628 (toll-free)

Fax: 888-841-9041

[www.everestbiotech.com](http://www.everestbiotech.com)

**Research Use Only. Not for  
diagnostic or therapeutic use.**

## EB06670 - Goat Anti-Asporin / ASPN Antibody

Size: 100µg specific antibody in 200µl



### Target Protein

**Principal Names:** ASPN, PLAP1, SLRR1C, FLJ20129, asporin (LRR class 1), small leucine-rich protein 1C, periodontal ligament associated protein 1, asporin, OS3, asporin proteoglycan

**Official Symbol:** ASPN

**Accession Number(s):** NP\_060150.4

**Human GeneID(s):** [54829](#)

### Immunogen

Peptide with sequence C-IHENKVKKIQKDT, from the internal region of the protein sequence according to NP\_060150.4.

Please note the [peptide](#) is available for sale.

### Purification and Storage

Purified from goat serum by ammonium sulphate precipitation followed by antigen affinity chromatography using the immunizing peptide.

Supplied at 0.5 mg/ml in Tris saline, 0.02% sodium azide, pH7.3 with 0.5% bovine serum albumin.

Aliquot and store at -20°C. Minimize freezing and thawing.

### Applications Tested

**Peptide ELISA:** antibody detection limit dilution 1:64000.

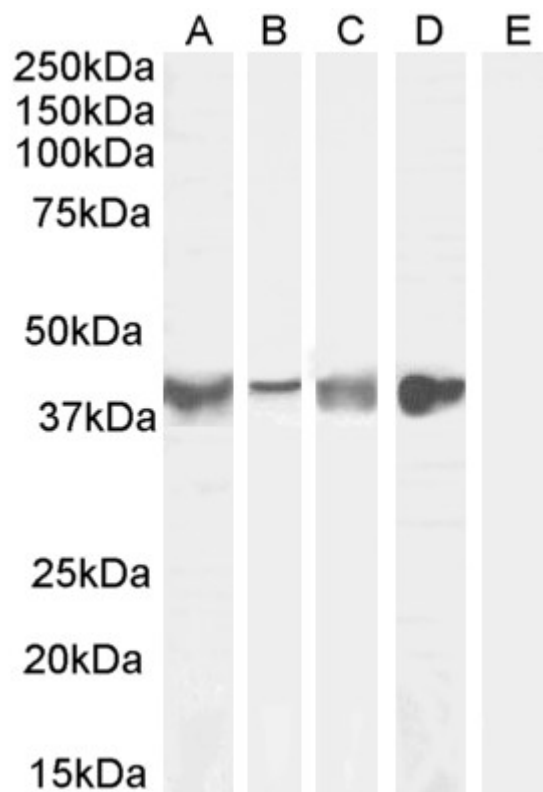
**Western blot:** Approx 40kDa band observed in Human Tonsil and Uterus and in Mouse and Rat Skeletal Muscle lysates (calculated MW of 43.3kDa according to Human NP\_060150.4, and 42.6kDa according to Mouse NP\_001165952.1 and Rat NP\_001014030.1). Recommended concentration: 0.1-1µg/ml. Primary incubation 1 hour at room temperature. **Negative Control:** Human Cerebellum lysate.

**Immunofluorescence:** Strong expression of the protein seen in the cytoplasm of HeLa cells. Recommended concentration: 10µg/ml.

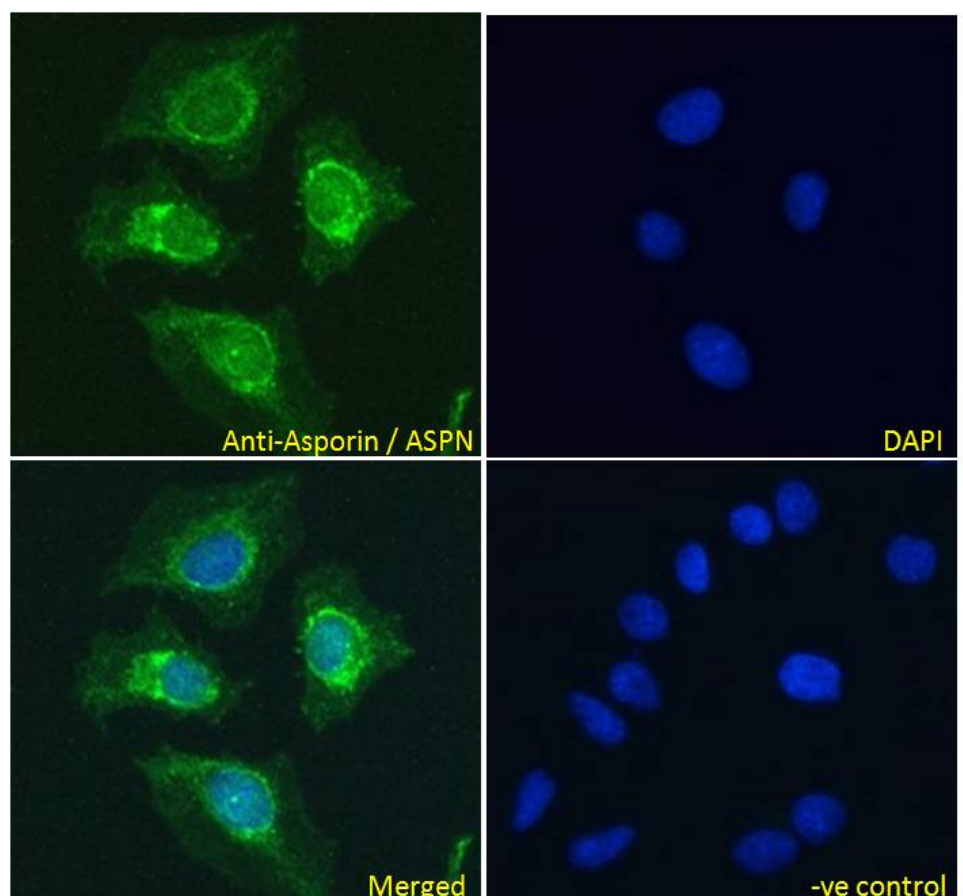
### Species Reactivity

**Tested:** Human, Mouse, Rat

**Expected from sequence similarity:** Human, Mouse, Rat



EB06670 (0.1µg/ml) staining of Human Tonsil (A), (0.3ug/ml) Human Uterus (B), Mouse Skeletal Muscle (C) (1ug/ml) Rat Skeletal Muscle (D) and negative control Human Cerebellum (E) lysate (35µg protein in RIPA buffer).Detected by chemiluminescence.



EB06670 Immunofluorescence analysis of paraformaldehyde fixed HeLa cells, permeabilized with 0.15% Triton. Primary incubation 1hr (10ug/ml) followed by Alexa Fluor 488 secondary antibody (4ug/ml), showing nuclear

membrane staining. The nuclear stain is DAPI (blue). Negative control: Unimmunized goat IgG (10ug/ml) followed by Alexa Fluor 488 secondary antibody (4ug/ml).