



## UK Office

### Everest Biotech Ltd

Cherwell Innovation Centre  
77 Heyford Park  
Upper Heyford  
Oxfordshire  
OX25 5HD  
UK

Enquiries:

[info@everestbiotech.com](mailto:info@everestbiotech.com)

Sales:

[sales@everestbiotech.com](mailto:sales@everestbiotech.com)

Tech support:

[support@everestbiotech.com](mailto:support@everestbiotech.com)

Tel: +44 (0)1869 238326

[www.everestbiotech.com](http://www.everestbiotech.com)

**Research Use Only. Not for  
diagnostic or therapeutic use.**

## EB08138 - Goat Anti-ASRGL1 / ALP Antibody

Size: 100µg specific antibody in 200µl



### Target Protein

**Principal Names:** ASRGL1, ALP, asparaginase like 1, ALP1, FLJ22316, asparaginase-like 1 protein

**Official Symbol:** ASRGL1

**Accession Number(s):** NP\_001077395.1; NP\_079356.3

**Human GeneID(s):** [80150](#)

**Important Comments:** Both reported variants represent identical protein (NP\_001077395.1 and NP\_079356.3).

### Immunogen

Peptide with sequence EKHEKGAQKTDCQ, from the internal region of the protein sequence according to NP\_001077395.1; NP\_079356.3.

Please note the [peptide](#) is available for sale.

### Purification and Storage

Purified from goat serum by ammonium sulphate precipitation followed by antigen affinity chromatography using the immunizing peptide.

Supplied at 0.5 mg/ml in Tris saline, 0.02% sodium azide, pH7.3 with 0.5% bovine serum albumin.

Aliquot and store at -20°C. Minimize freezing and thawing.

### Applications Tested

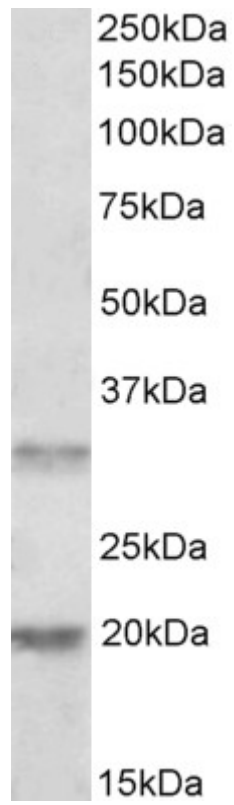
**Peptide ELISA:** antibody detection limit dilution 1:32000.

**Western blot:** Approx 34kDa band observed in Human Tosil and lysteof cell line Hela lysates (calculated MW of 32.1kDa according to NP\_001077395.1). Recommended concentration: 1-3µg/ml. An additional band of unknown identity was also consistently observed at 20kDa. This band was successfully blocked by incubation with the immunizing peptide.

### Species Reactivity

**Tested:** Human

**Expected from sequence similarity:** Human



EB08138 (0.5 $\mu$ g/ml) staining of Human Tonsil lysate (35 $\mu$ g protein in RIPA buffer). Primary incubation was 1 hour. Detected by chemiluminescence.