

UK Office

Everest Biotech Ltd

Cherwell Innovation Centre
77 Heyford Park
Upper Heyford
Oxfordshire
OX25 5HD
UK

Enquiries:

info@everestbiotech.com

Sales:

sales@everestbiotech.com

Tech support:

support@everestbiotech.com

Tel: +44 (0)1869 238326

www.everestbiotech.com

**Research Use Only. Not for
diagnostic or therapeutic use.**

EB12073 - Goat Anti-ATF1 Antibody

Size: 100µg specific antibody in 200µl



Target Protein

Principal Names: ATF1, activating transcription factor 1, EWS-ATF1, FUS/ATF-1, TREB36, cAMP-dependent transcription factor ATF-1, cyclic AMP-dependent transcription factor ATF-1

Official Symbol: ATF1

Accession Number(s): NP_005162.1

Human GeneID(s): [466](#)

Immunogen

Peptide with sequence EDSHKSTTSETAPQ-C, from the N Terminus of the protein sequence according to NP_005162.1.

Please note the [peptide](#) is available for sale.

Purification and Storage

Purified from goat serum by ammonium sulphate precipitation followed by antigen affinity chromatography using the immunizing peptide.

Supplied at 0.5 mg/ml in Tris saline, 0.02% sodium azide, pH7.3 with 0.5% bovine serum albumin.

Aliquot and store at -20°C. Minimize freezing and thawing.

Applications Tested

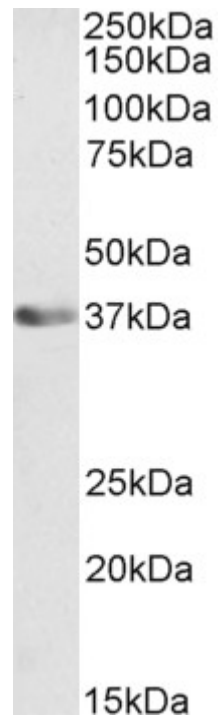
Peptide ELISA: antibody detection limit dilution 1:8000.

Western blot: Approx 37kDa band observed in nuclear lysates of cell line A431 (calculated MW of 29.2kDa according to NP_005162.1). This molecular weight is routinely observed by other sources. Recommended concentration: 0.1-0.3µg/ml.

Species Reactivity

Tested: Human

Expected from sequence similarity: Human, Cow



EB12073 (0.1 μ g/ml) staining of A431 nuclear cell lysate (35 μ g protein in RIPA buffer). Primary incubation was 1 hour. Detected by chemiluminescence.