



UK Office

Everest Biotech Ltd

Cherwell Innovation Centre
77 Heyford Park
Upper Heyford
Oxfordshire
OX25 5HD
UK

Enquiries:

info@everestbiotech.com

Sales:

sales@everestbiotech.com

Tech support:

support@everestbiotech.com

Tel: +44 (0)1869 238326

www.everestbiotech.com

**Research Use Only. Not for
diagnostic or therapeutic use.**

EB05198-T - Goat Anti-ATF2 Antibody - Trial

Size: 20µg specific antibody in 40µl



Target Protein

Principal Names: ATF2, activating transcription factor 2, HB16, CREB2, TREB7, CRE-BP1, cAMP responsive element binding protein 2, MGC111558, activating transcription factor 2 splice variant ATF2-var2, cAMP responsive element binding protein 2, formerly

Official Symbol: ATF2

Accession Number(s): NP_001871.2

Human GeneID(s): [1386](#)

Non-Human GeneID(s): 81647 (rat)

Immunogen

Peptide with sequence C-IVMAPSSQSQPSGS, from the C Terminus of the protein sequence according to NP_001871.2.

Please note the [peptide](#) is available for sale.

Purification and Storage

Purified from goat serum by ammonium sulphate precipitation followed by antigen affinity chromatography using the immunizing peptide.

Supplied at 0.5 mg/ml in Tris saline, 0.02% sodium azide, pH7.3 with 0.5% bovine serum albumin.

Aliquot and store at -20°C. Minimize freezing and thawing.

Applications Tested

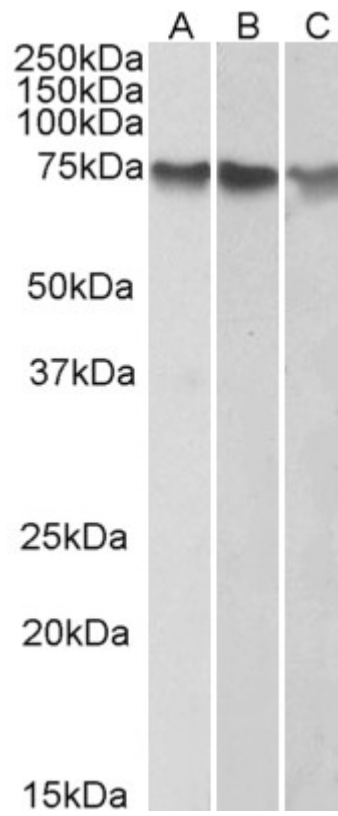
Peptide ELISA: antibody detection limit dilution 1:32000.

Western blot: Approx 75kDa observed in nuclear lysates of cell lines HeLa, HepG2 and K562. This molecular weight is routinely observed by other sources. Recommended concentration: 0.3-1µg/ml. Primary incubation 1 hour at room temperature.

Species Reactivity

Tested: Human

Expected from sequence similarity: Human, Rat, Dog, Cow



EB05198 (1 μ g/ml) staining of HepG2 (A), K562 (B) and HeLa (C) nuclear lysates (35 μ g protein in RIPA buffer).
Detected by chemiluminescence.