



## UK Office

### Everest Biotech Ltd

Cherwell Innovation Centre  
77 Heyford Park  
Upper Heyford  
Oxfordshire  
OX25 5HD  
UK

Enquiries:

[info@everestbiotech.com](mailto:info@everestbiotech.com)

Sales:

[sales@everestbiotech.com](mailto:sales@everestbiotech.com)

Tech support:

[support@everestbiotech.com](mailto:support@everestbiotech.com)

Tel: +44 (0)1869 238326

Fax: +44 (0)1869 238327

## US Office

### Everest Biotech c/o Abcore

405 Maple Street, Suite A106  
Ramona,  
CA 92065  
USA

Inquiries:

[info@everestbiotech.com](mailto:info@everestbiotech.com)

Sales:

[usasales@everestbiotech.com](mailto:usasales@everestbiotech.com)

Tech support:

[support@everestbiotech.com](mailto:support@everestbiotech.com)

Tel: 888-320-4628 (toll-free)

Fax: 888-841-9041

[www.everestbiotech.com](http://www.everestbiotech.com)

**Research Use Only. Not for  
diagnostic or therapeutic use.**

## EB05198 - Goat Anti-ATF2 Antibody

Size: 100µg specific antibody in 200µl



### Target Protein

**Principal Names:** ATF2, activating transcription factor 2, HB16, CREB2, TREB7, CRE-BP1, cAMP responsive element binding protein 2, MGC111558, activating transcription factor 2 splice variant ATF2-var2, cAMP responsive element binding protein 2, formerly

**Official Symbol:** ATF2

**Accession Number(s):** NP\_001871.2

**Human GeneID(s):** [1386](#)

**Non-Human GeneID(s):** 81647 (rat)

### Immunogen

Peptide with sequence C-IVMAPSSQSQPSGS, from the C Terminus of the protein sequence according to NP\_001871.2.

Please note the [peptide](#) is available for sale.

### Purification and Storage

Purified from goat serum by ammonium sulphate precipitation followed by antigen affinity chromatography using the immunizing peptide.

Supplied at 0.5 mg/ml in Tris saline, 0.02% sodium azide, pH7.3 with 0.5% bovine serum albumin.

Aliquot and store at -20°C. Minimize freezing and thawing.

### Applications Tested

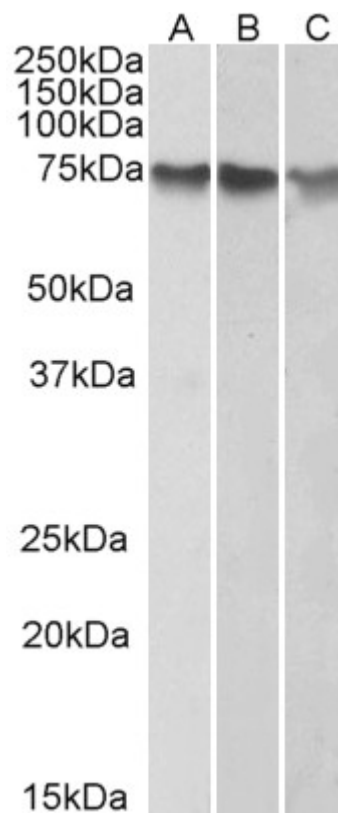
**Peptide ELISA:** antibody detection limit dilution 1:32000.

**Western blot:** Approx 75kDa observed in nuclear lysates of cell lines HeLa, HepG2 and K562. This molecular weight is routinely observed by other sources. Recommended concentration: 0.3-1µg/ml. Primary incubation 1 hour at room temperature.

### Species Reactivity

**Tested:** Human

**Expected from sequence similarity:** Human, Rat, Dog, Cow



EB05198 (1 $\mu$ g/ml) staining of HepG2 (A), K562 (B) and HeLa (C) nuclear lysates (35 $\mu$ g protein in RIPA buffer).  
Detected by chemiluminescence.