



## UK Office

### Everest Biotech Ltd

Cherwell Innovation Centre  
77 Heyford Park  
Upper Heyford  
Oxfordshire  
OX25 5HD  
UK

Enquiries:

[info@everestbiotech.com](mailto:info@everestbiotech.com)

Sales:

[sales@everestbiotech.com](mailto:sales@everestbiotech.com)

Tech support:

[support@everestbiotech.com](mailto:support@everestbiotech.com)

Tel: +44 (0)1869 238326

[www.everestbiotech.com](http://www.everestbiotech.com)

**Research Use Only. Not for  
diagnostic or therapeutic use.**

## EB05246 - Goat Anti-ATF5 Antibody

Size: 100µg specific antibody in 200µl



### Target Protein

**Principal Names:** ATF5, activating transcription factor 5, ATFX, FLJ34666, HMFN0395

**Official Symbol:** ATF5

**Accession Number(s):** NP\_036200.2

**Human GeneID(s):** [22809](#)

**Non-Human GeneID(s):** 107503 (mouse), 282840 (rat)

### Immunogen

Peptide with sequence EVYKARSQRTRSC, from the C Terminus of the protein sequence according to NP\_036200.2.

Please note the [peptide](#) is available for sale.

### Purification and Storage

Purified from goat serum by ammonium sulphate precipitation followed by antigen affinity chromatography using the immunizing peptide.

Supplied at 0.5 mg/ml in Tris saline, 0.02% sodium azide, pH7.3 with 0.5% bovine serum albumin.

Aliquot and store at -20°C. Minimize freezing and thawing.

### Applications Tested

**Peptide ELISA:** antibody detection limit dilution 1:32000.

**Western blot:** Approx 29kDa band observed in Human Heart lysates (calculated MW of 30.7kDa according to NP\_036200.2). Recommended concentration: 1-3µg/ml.

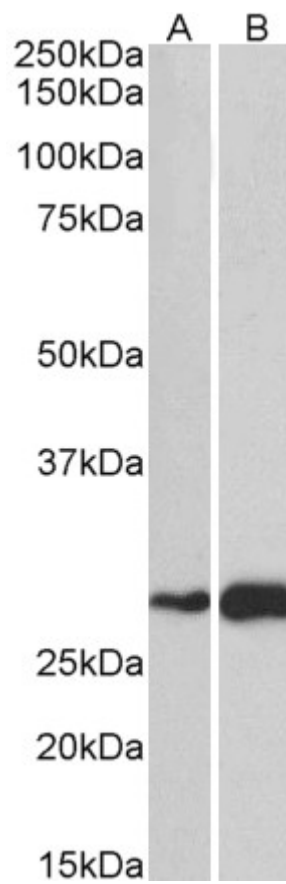
### Species Reactivity

**Tested:** Human, Mouse, Rat

**Expected from sequence similarity:** Human, Mouse, Rat



EB05246 (1.5 $\mu$ g/ml) staining of Human Heart lysate (35 $\mu$ g protein in RIPA buffer). Primary incubation was 1 hour. Detected by chemiluminescence.



EB05246 (1 $\mu$ g/ml) staining of Mouse (A) and Rat (B) Skeletal Muscle lysate (35 $\mu$ g protein in RIPA buffer). Primary incubation was 1 hour. Detected by chemiluminescence.