



UK Office

Everest Biotech Ltd

Cherwell Innovation Centre
77 Heyford Park
Upper Heyford
Oxfordshire
OX25 5HD
UK

Enquiries:

info@everestbiotech.com

Sales:

sales@everestbiotech.com

Tech support:

support@everestbiotech.com

Tel: +44 (0)1869 238326

www.everestbiotech.com

**Research Use Only. Not for
diagnostic or therapeutic use.**

EB12080 - Goat Anti-ATF6 (aa437-449) Antibody

Size: 100µg specific antibody in 200µl



Target Protein

Principal Names: ATF6, activating transcription factor 6, ATF6A, cAMP-dependent transcription factor ATF-6 alpha, cyclic AMP-dependent transcription factor ATF-6 alpha

Official Symbol: ATF6

Accession Number(s): NP_031374.2

Human GeneID(s): [22926](#)

Non-Human GeneID(s): 304962 (rat)

Immunogen

Peptide with sequence C-NSYRYDHSVSNKD, from the internal region of the protein sequence according to NP_031374.2.

Please note the [peptide](#) is available for sale.

Purification and Storage

Purified from goat serum by ammonium sulphate precipitation followed by antigen affinity chromatography using the immunizing peptide.

Supplied at 0.5 mg/ml in Tris saline, 0.02% sodium azide, pH7.3 with 0.5% bovine serum albumin.

Aliquot and store at -20°C. Minimize freezing and thawing.

Applications Tested

Peptide ELISA: antibody detection limit dilution 1:128000.

Western blot: Approx 75-80kDa band observed in lysates of cell lines HeLa and MCF7, and in HeLa and Jurkat nuclear cell lysates (calculated MW of 74.6kDa according to NP_031374.2). Recommended concentration: 0.3-2µg/ml. Primary incubation 1 hour at room temperature.

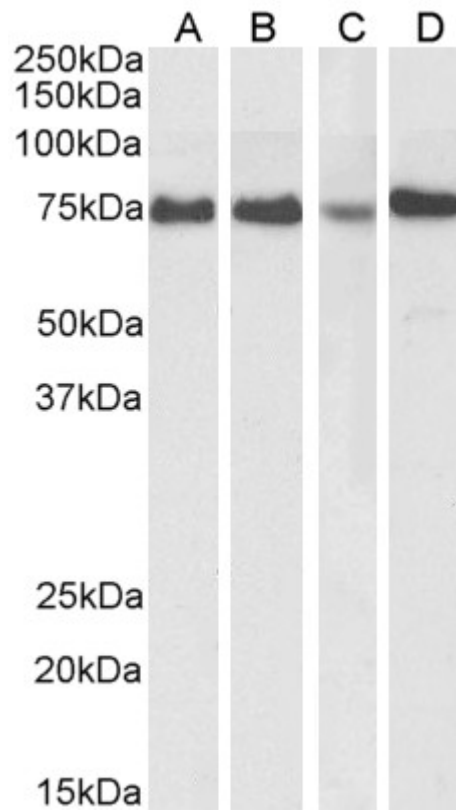
Immunofluorescence: Strong expression of the protein seen in the cytoplasm of A431 and HeLa cells. Recommended concentration: 10µg/ml.

Flow Cytometry: Flow cytometric analysis of A431 cells. Recommended concentration: 10ug/ml.

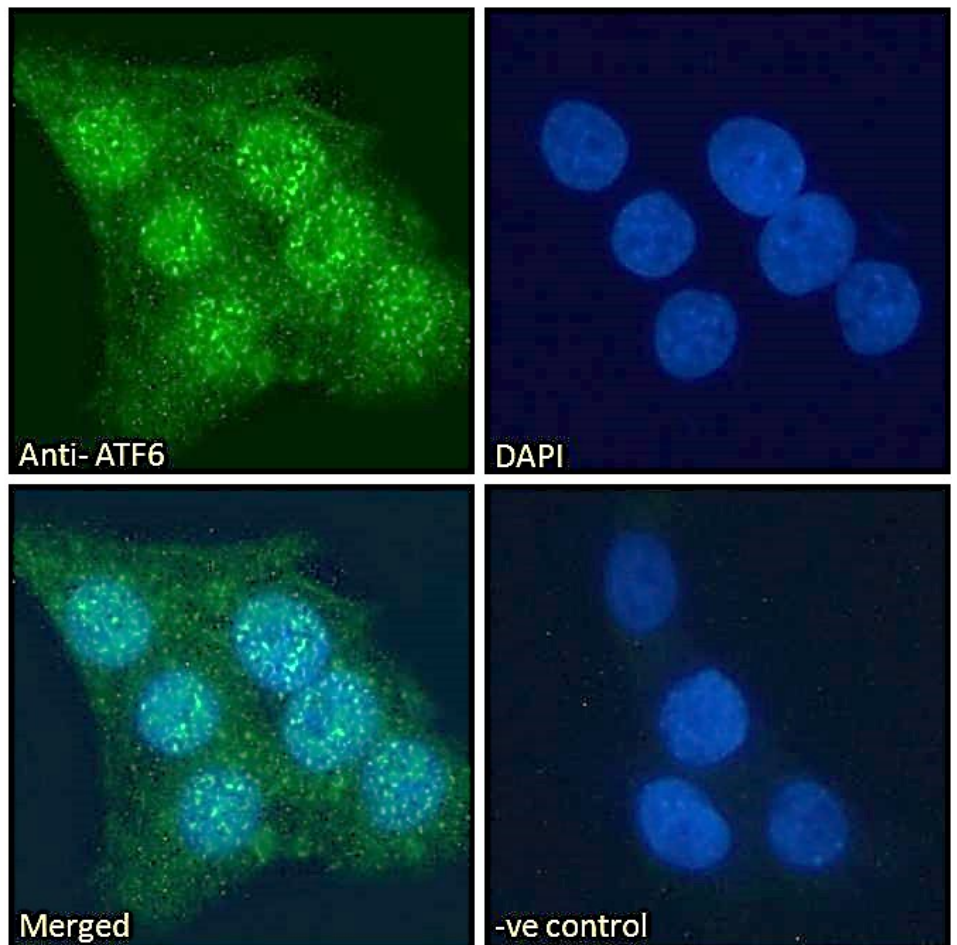
Species Reactivity

Tested: Human

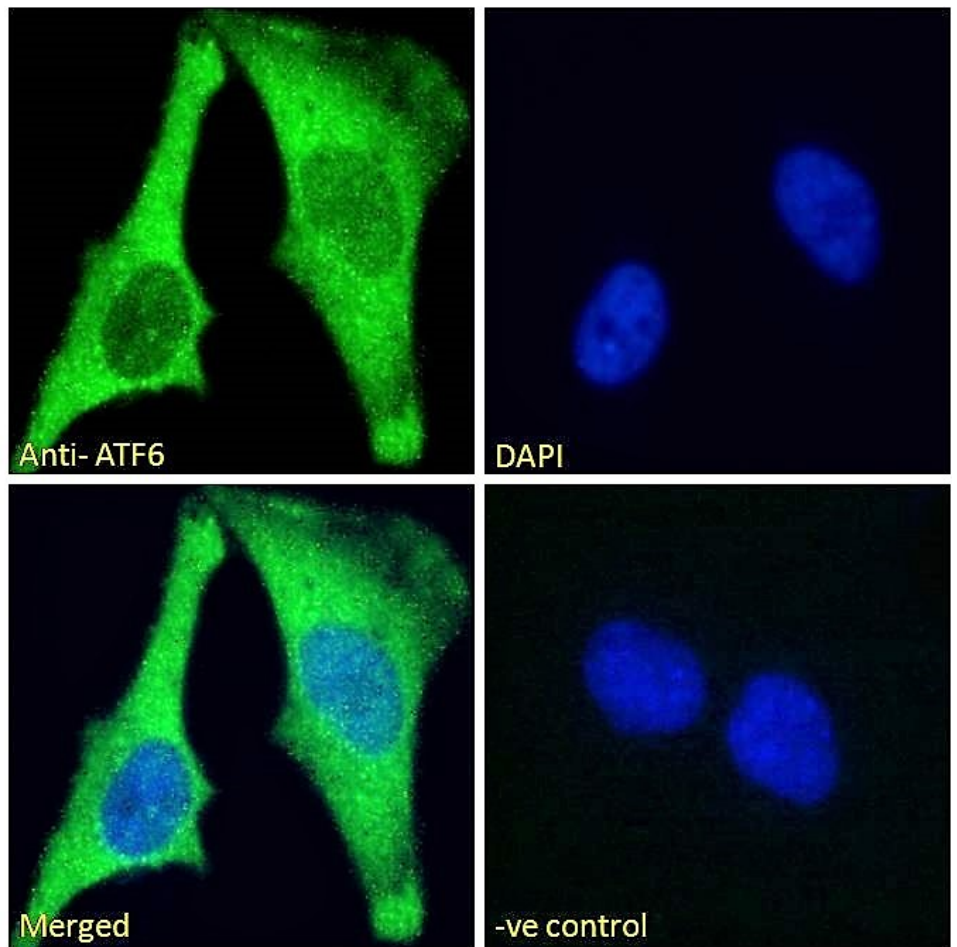
Expected from sequence similarity: Human, Rat, Dog, Pig, Cow



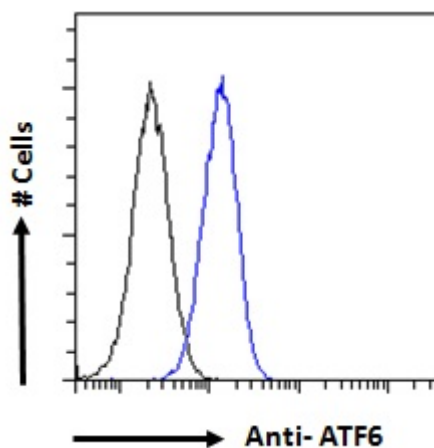
EB012080 (1 μ g/ml) staining of HeLa (A) and MCF7 (B) cell lysate, and HeLa (C) and Jurkat (D) nuclear cell lysate(35 μ g protein in RIPA buffer). Detected by chemiluminescence.



EB12080 Immunofluorescence analysis of paraformaldehyde fixed A431 cells, permeabilized with 0.15% Triton. Primary incubation 1hr (10ug/ml) followed by Alexa Fluor 488 secondary antibody (2ug/ml), showing cytoplasmic and nuclear staining. The nuclear stain is DAPI (blue). Negative control: Unimmunized goat IgG (10ug/ml) followed by Alexa Fluor 488 secondary antibody (2ug/ml).



EB12080 Immunofluorescence analysis of paraformaldehyde fixed HeLa cells, permeabilized with 0.15% Triton. Primary incubation 1hr (10ug/ml) followed by Alexa Fluor 488 secondary antibody (2ug/ml), showing cytoplasmic staining. The nuclear stain is DAPI (blue). Negative control: Unimmunized goat IgG (10ug/ml) followed by Alexa Fluor 488 secondary antibody (2ug/ml).



EB12080 Flow cytometric analysis of paraformaldehyde fixed A431 cells (blue line), permeabilized with 0.5% Triton. Primary incubation 1hr (10ug/ml) followed by Alexa Fluor 488 secondary antibody (1ug/ml). IgG control: Unimmunized goat IgG (black line) followed by Alexa Fluor 488 secondary antibody.