

UK Office

Everest Biotech Ltd

Cherwell Innovation Centre
77 Heyford Park
Upper Heyford
Oxfordshire
OX25 5HD
UK

Enquiries:

info@everestbiotech.com

Sales:

sales@everestbiotech.com

Tech support:

support@everestbiotech.com

Tel: +44 (0)1869 238326

www.everestbiotech.com

**Research Use Only. Not for
diagnostic or therapeutic use.**

EB08867 - Goat Anti-ATG4A Antibody

Size: 100µg specific antibody in 200µl



Target Protein

Principal Names: ATG4A, ATG4 autophagy related 4 homolog A (S. cerevisiae), APG4A, AUTL2, APG4 autophagy 4 homolog A, AUT-like 2, cysteine endopeptidase, OTTHUMP00000062893, autophagin 2, autophagy-related cysteine endopeptidase 2

Official Symbol: ATG4A

Accession Number(s): NP_443168.2; NP_840054.1

Human GeneID(s): [115201](#)

Important Comments: This antibody is expected to recognize both reported isoforms (NP_443168.2; NP_840054.1)

Immunogen

Peptide with sequence TEENGTVNDQTFHC, from the internal region of the protein sequence according to NP_443168.2; NP_840054.1.

Please note the [peptide](#) is available for sale.

Purification and Storage

Purified from goat serum by ammonium sulphate precipitation followed by antigen affinity chromatography using the immunizing peptide.

Supplied at 0.5 mg/ml in Tris saline, 0.02% sodium azide, pH7.3 with 0.5% bovine serum albumin.

Aliquot and store at -20°C. Minimize freezing and thawing.

Applications Tested

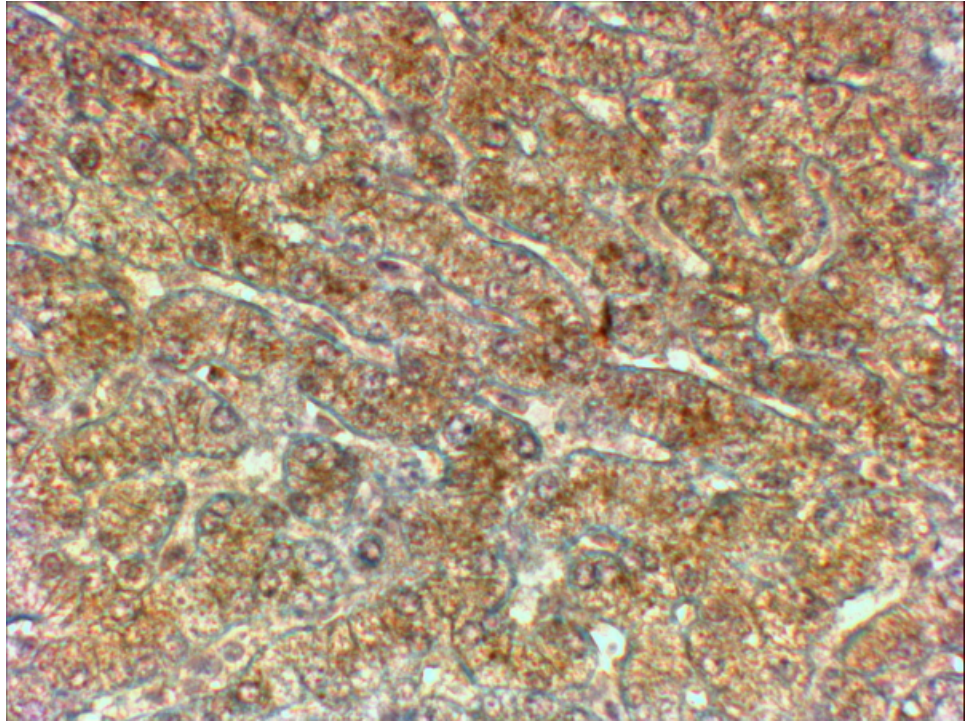
Peptide ELISA: antibody detection limit dilution 1:1000.

IHC: In paraffin embedded Human Liver shows textured cytoplasm staining in the hepatocytes. Recommended concentration, 2-4µg/ml.

Species Reactivity

Tested: Human

Expected from sequence similarity: Human



EB08867 (2 μ g/ml) staining of paraffin embedded Human Liver. Steamed antigen retrieval with citrate buffer pH 6, HRP-staining.