



## International Office

### Everest Biotech Ltd

Vector Laboratories, Inc.  
6737 Mowry Ave  
Newark, CA 94560  
United States

Customer Service:

[customerservice@vectorlabs.com](mailto:customerservice@vectorlabs.com)

Technical Service:

[technical@vectorlabs.com](mailto:technical@vectorlabs.com)

Tel: +1 (800) 227-6666

[www.everestbiotech.com](http://www.everestbiotech.com)

**Research Use Only. Not for  
diagnostic or therapeutic use.**

## EB09223 - Goat Anti-ATG4D Antibody

Size: 100µg specific antibody in 200µl



### Target Protein

**Principal Names:** ATG4D, ATG4 autophagy related 4 homolog D (S. cerevisiae), APG4-D, APG4D, AUTL4, APG4 autophagy 4 homolog D, AUT-like 4, cysteine endopeptidase, autophagin-4, autophagy-related cysteine endopeptidase 4, cysteine protease involved in autophagy

**Official Symbol:** ATG4D

**Accession Number(s):** NP\_116274.3; NP\_001268433.1

**Human GeneID(s):** [84971](#)

**Non-Human GeneID(s):** 235040 (mouse), 686505 (rat)

### Immunogen

Peptide with sequence CSQLAQPTLRLPRT, from the internal region (near C terminus) of the protein sequence according to NP\_116274.3; NP\_001268433.1.

Please note the [peptide](#) is available for sale.

### Purification and Storage

Purified from goat serum by ammonium sulphate precipitation followed by antigen affinity chromatography using the immunizing peptide.

Supplied at 0.5 mg/ml in Tris saline, 0.02% sodium azide, pH7.3 with 0.5% bovine serum albumin.

Aliquot and store at -20°C. Minimize freezing and thawing.

### Applications Tested

**Peptide ELISA:** antibody detection limit dilution 1:32000.

**IHC:** Paraffin embedded Human Pancreas. Recommended concentration: 2.5µg/ml.

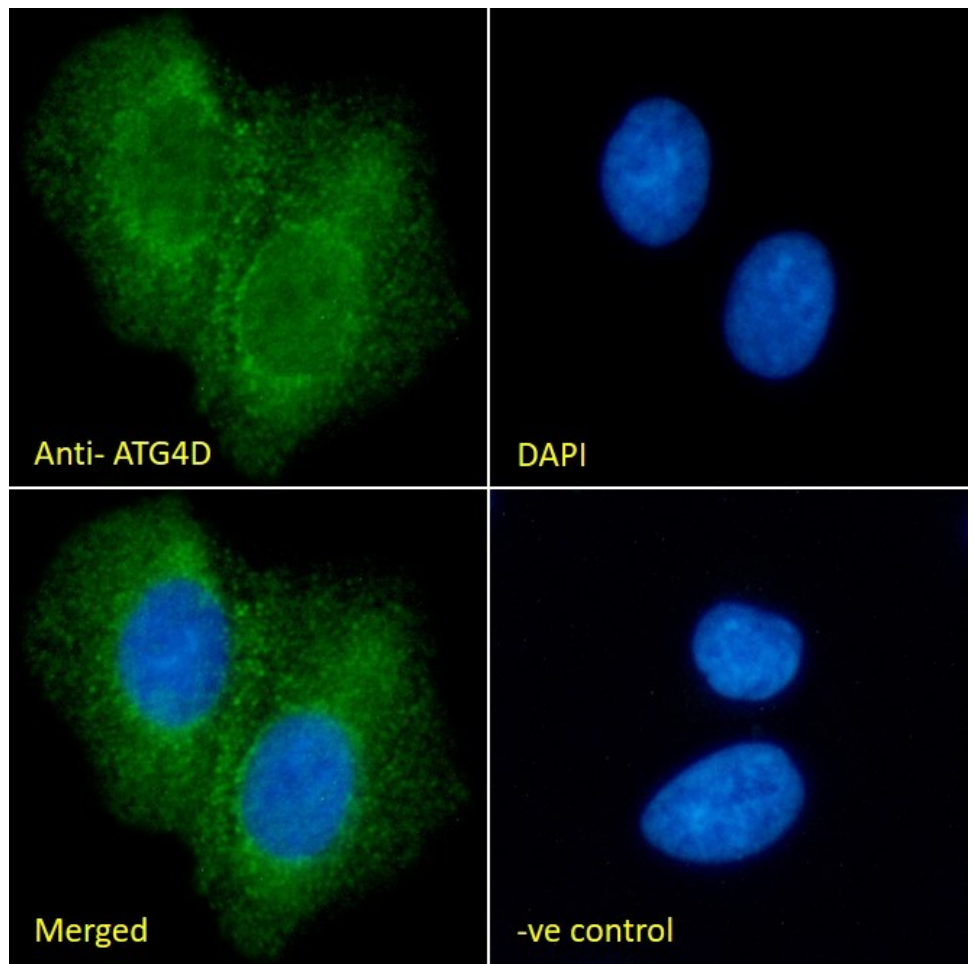
**Immunofluorescence:** Strong expression of the protein seen in the cytoplasm of HEK293 cells. Recommended concentration: 10µg/ml.

**Flow Cytometry:** Flow cytometric analysis of HEK293 cells. Recommended concentration: 10ug/ml.

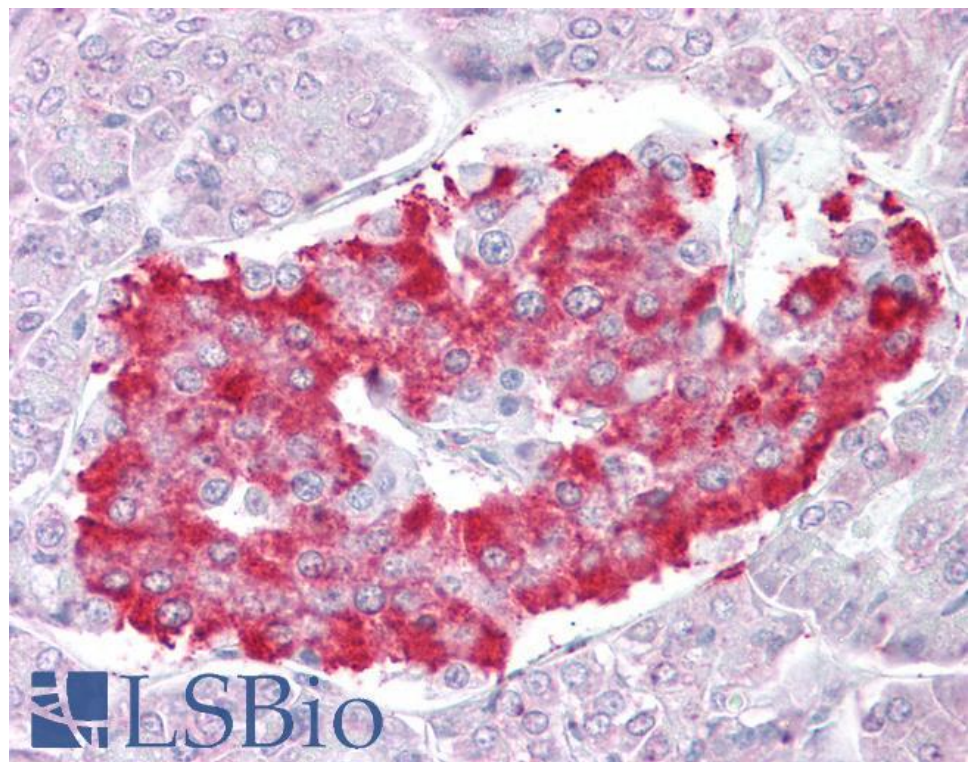
### Species Reactivity

**Tested:** Human

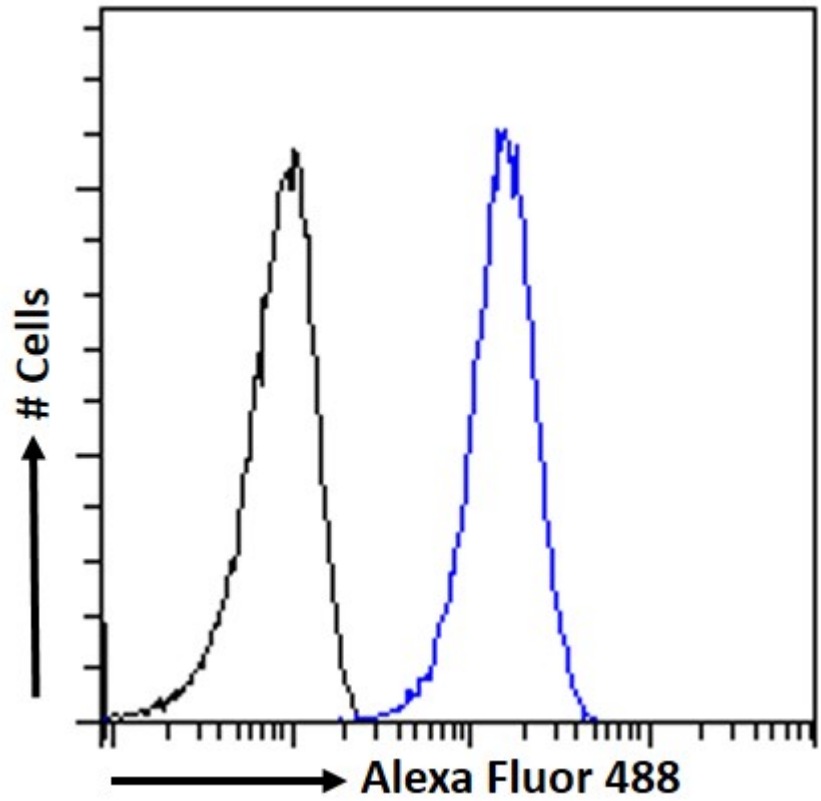
**Expected from sequence similarity:** Human, Mouse, Rat, Dog, Pig



EB09223 Immunofluorescence analysis of paraformaldehyde fixed HEK293 cells, permeabilized with 0.15% Triton. Primary incubation 1hr (10ug/ml) followed by Alexa Fluor 488 secondary antibody (2ug/ml), showing cytoplasmic staining. The nuclear stain is DAPI (blue). Negative control: Unimmunized goat IgG (10ug/ml) followed by Alexa Fluor 488 secondary antibody (2ug/ml).



EB09223 (2.5µg/ml) staining of paraffin embedded Human Pancreas. Steamed antigen retrieval with citrate buffer pH 6, AP-staining.



EB09223 Flow cytometric analysis of paraformaldehyde fixed HEK293 cells (blue line), permeabilized with 0.5% Triton. Primary incubation 1hr (10ug/ml) followed by Alexa Fluor 488 secondary antibody (1ug/ml). IgG control: Unimmunized goat IgG (black line) followed by Alexa Fluor 488 secondary antibody.