



UK Office

Everest Biotech Ltd

Cherwell Innovation Centre
77 Heyford Park
Upper Heyford
Oxfordshire
OX25 5HD
UK

Enquiries:

info@everestbiotech.com

Sales:

sales@everestbiotech.com

Tech support:

support@everestbiotech.com

Tel: +44 (0)1869 238326

Fax: +44 (0)1869 238327

US Office

Everest Biotech c/o Abcore

405 Maple Street, Suite A106
Ramona,
CA 92065
USA

Inquiries:

info@everestbiotech.com

Sales:

usasales@everestbiotech.com

Tech support:

support@everestbiotech.com

Tel: 888-320-4628 (toll-free)

Fax: 888-841-9041

www.everestbiotech.com

**Research Use Only. Not for
diagnostic or therapeutic use.**

EB07671 - Goat Anti-ATGL / Desnutrin Antibody

Size: 100µg specific antibody in 200µl



Target Protein

Principal Names: ATGL, DESNUTRIN, PNPLA2, patatin-like phospholipase domain containing 2, 1110001C14Rik, DKFZp667M109, FP17548, PEDF-R, TTS-2.2, TTS2, adipose triglyceride lipase, pigment epithelium-derived factor, transport-secretion protein 2.2, triglyceride hydrolase

Official Symbol: PNPLA2

Accession Number(s): NP_065109.1

Human GeneID(s): [57104](#)

Non-Human GeneID(s): 66853 (mouse), 361676 (rat)

Important Comments: Please note this antibody was designed using the Mouse sequence NP_080078.1, which differs by 2 amino acids from the Human sequence NP_065109.1.

Immunogen

Peptide with sequence C-NIIEVSKEARKR, from the internal region of the protein sequence according to NP_065109.1.

Please note the [peptide](#) is available for sale.

Purification and Storage

Purified from goat serum by ammonium sulphate precipitation followed by antigen affinity chromatography using the immunizing peptide.

Supplied at 0.5 mg/ml in Tris saline, 0.02% sodium azide, pH7.3 with 0.5% bovine serum albumin.

Aliquot and store at -20°C. Minimize freezing and thawing.

Applications Tested

Peptide ELISA: antibody detection limit dilution 1:32000.

Western blot: Approx 60kDa band observed in Human Adipose lysates (calculated MW of 55.3kDa according to NP_065109.1). Recommended concentration: 0.5-2µg/ml.

Primary incubation was 1 hour. Preliminary testing was unsuccessful on Rat Testis for this particular batch.

IHC: In paraffin embedded Human Heart shows intense staining of distinct spots in the myocardial fibres in transverse section. Recommended concentration: 2-3µg/ml.

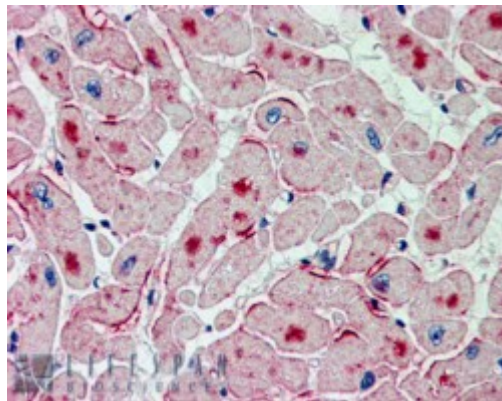
Species Reactivity

Tested: Human

Expected from sequence similarity: Human, Mouse, Rat, Dog, Pig, Cow



EB07671 (0.5µg/ml) staining of Human Adipose lysate (35µg protein in RIPA buffer). Detected by chemiluminescence.



EB07671 (2.5µg/ml) staining of paraffin embedded Human Heart. Steamed antigen retrieval with citrate buffer pH 6, AP-staining.