



International Office

Everest Biotech Ltd

Vector Laboratories, Inc.
6737 Mowry Ave
Newark, CA 94560
United States

Customer Service:

customerservice@vectorlabs.com

Technical Service:

technical@vectorlabs.com

Tel: +1 (800) 227-6666

www.everestbiotech.com

**Research Use Only. Not for
diagnostic or therapeutic use.**

EB09640 - Goat Anti-ATP1B1 Antibody

Size: 100µg specific antibody in 200µl



Target Protein

Principal Names: ATP1B1, ATPase, Na⁺/K⁺ transporting, beta 1 polypeptide, ATP1B, MGC1798, Beta 1-subunit of Na(+),K(+)-ATPase, Na⁺/K⁺ -ATPase beta 1 subunit, Na, K-ATPase beta-1 polypeptide, Na,K-ATPase beta 1 subunit, OTTHUMP00000032537, OTTHUMP00000032538, adenosinetriphosphatase, sodium/potassium-dependent ATPase beta-1 subunit, sodium/potassium-transporting ATPase beta-1 chain

Official Symbol: ATP1B1

Accession Number(s): NP_001668.1; NP_001001787.1

Human GeneID(s): [481](#)

Important Comments: This antibody is expected to recognize both reported isoforms (NP_001668.1; NP_001001787.1).

Immunogen

Peptide with sequence C-KTEISFRPNPKSYE, from the internal region of the protein sequence according to NP_001668.1; NP_001001787.1.

Please note the [peptide](#) is available for sale.

Purification and Storage

Purified from goat serum by ammonium sulphate precipitation followed by antigen affinity chromatography using the immunizing peptide.

Supplied at 0.5 mg/ml in Tris saline, 0.02% sodium azide, pH7.3 with 0.5% bovine serum albumin.

Aliquot and store at -20°C. Minimize freezing and thawing.

Applications Tested

Peptide ELISA: antibody detection limit dilution 1:128000.

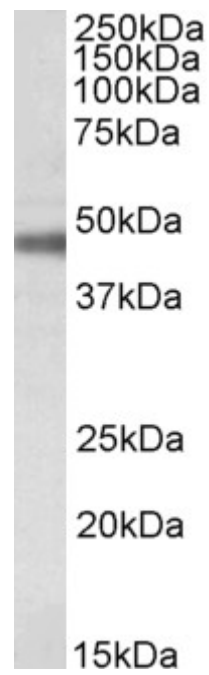
Western blot: Approx 48kDa band observed in Rat Retina lysates and 50kDa in Mouse and Rat Kidney lysates (calculated MW of 35.1kDa according to Human NP_001668.1, 35.2kDa according to Mouse NP_033851.1 and Rat NP_037245.2). The observed molecular weight corresponds to the glycosylated form (PMID: 20130120). Recommended concentration: 0.1-0.3µg/ml.

IHC: Paraffin embedded Human Small Intestine. Recommended concentration: 5µg/ml.

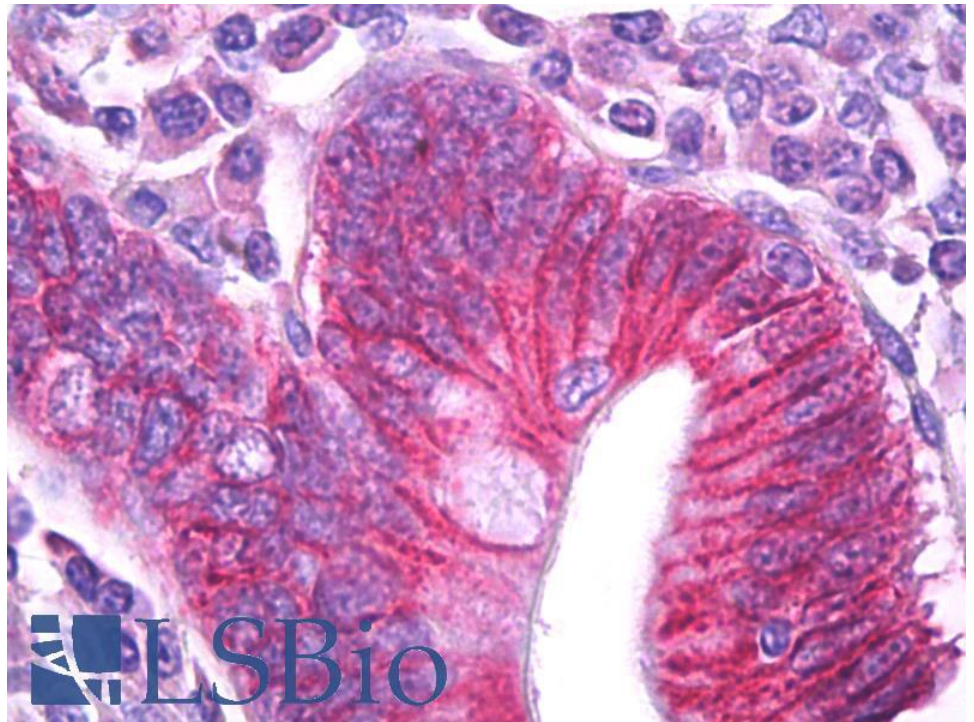
Species Reactivity

Tested: Human, Mouse, Rat

Expected from sequence similarity: Human, Mouse, Rat, Dog, Cow, Pig



EB09640 (0.1µg/ml) staining of Rat Retina lysate (35µg protein in RIPA buffer). Primary incubation was 1 hour.
Detected by chemiluminescence.



EB09640 (5µg/ml) staining of paraffin embedded Human Small Intestine. Steamed antigen retrieval with citrate buffer pH 6, AP-staining.