



## International Office

### Everest Biotech Ltd

Vector Laboratories, Inc.  
6737 Mowry Ave  
Newark, CA 94560  
United States

Customer Service:

[customerservice@vectorlabs.com](mailto:customerservice@vectorlabs.com)

Technical Service:

[technical@vectorlabs.com](mailto:technical@vectorlabs.com)

Tel: +1 (800) 227-6666

[www.everestbiotech.com](http://www.everestbiotech.com)

**Research Use Only. Not for  
diagnostic or therapeutic use.**

## EB12460 - Goat Anti-ATP5C1 (aa27-40) Antibody

Size: 100µg specific antibody in 200µl



### Target Protein

**Principal Names:** ATP5C1, ATP synthase, H<sup>+</sup> transporting, mitochondrial F1 complex, gamma polypeptide 1, ATP5C, ATP5CL1, ATP synthase gamma chain, mitochondrial, ATP synthase subunit gamma, mitochondrial, F-ATPase gamma subunit, mitochondrial ATP synthase, gamma subunit 1

**Official Symbol:** ATP5F1C

**Accession Number(s):** NP\_005165.1; NP\_001001973.1

**Human GeneID(s):** [509](#)

**Non-Human GeneID(s):** 11949 (mouse), 116550 (rat)

**Important Comments:** The immunizing peptide represents the N terminus of the mature protein. This antibody is expected to recognize both reported isoforms (NP\_005165.1; NP\_001001973.1).

### Immunogen

Peptide with sequence C-TLKDITRRLKSIKN, from the internal region (near N terminus) of the protein sequence according to NP\_005165.1; NP\_001001973.1.

Please note the [peptide](#) is available for sale.

### Purification and Storage

Purified from goat serum by ammonium sulphate precipitation followed by antigen affinity chromatography using the immunizing peptide.

Supplied at 0.5 mg/ml in Tris saline, 0.02% sodium azide, pH7.3 with 0.5% bovine serum albumin.

Aliquot and store at -20°C. Minimize freezing and thawing.

### Applications Tested

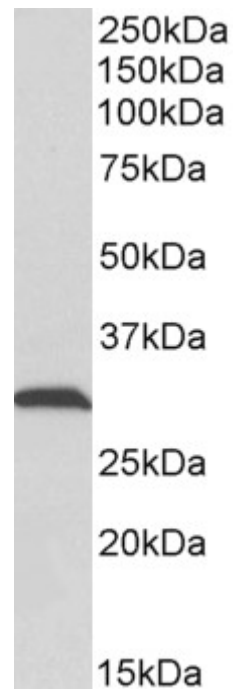
**Peptide ELISA:** antibody detection limit dilution 1:128000.

**Western blot:** Approx 30kDa band observed in Rat Skeletal Muscle lysates (calculated MW of 33.0kDa according to Rat NP\_446277.1). Recommended concentration: 0.1-0.3µg/ml.

### Species Reactivity

**Tested:** Rat

**Expected from sequence similarity:** Human, Mouse, Rat, Dog, Cow



EB12460 (0.1µg/ml) staining of Rat Skeletal Muscle lysate (35µg protein in RIPA buffer). Primary incubation was 1 hour. Detected by chemiluminescence.