

International Office

Everest Biotech Ltd

Vector Laboratories, Inc.
6737 Mowry Ave
Newark, CA 94560
United States

Customer Service:

customerservice@vectorlabs.com

Technical Service:

technical@vectorlabs.com

Tel: +1 (800) 227-6666

www.everestbiotech.com

**Research Use Only. Not for
diagnostic or therapeutic use.**

EB12461 - Goat Anti-ATP5C1 Antibody

Size: 100µg specific antibody in 200µl



Target Protein

Principal Names: ATP5C1, ATP synthase, H⁺ transporting, mitochondrial F1 complex, gamma polypeptide 1, ATP5C, ATP5CL1, ATP synthase gamma chain, mitochondrial, ATP synthase subunit gamma, mitochondrial, F-ATPase gamma subunit, mitochondrial ATP synthase, gamma subunit 1

Official Symbol: ATP5C1

Accession Number(s): NP_005165.1; NP_001001973.1

Human GeneID(s): [509](#)

Non-Human GeneID(s): 11949 (mouse), 116550 (rat)

Important Comments: This antibody is expected to recognize both reported isoforms (NP_005165.1; NP_001001973.1).

Immunogen

Peptide with sequence C-TLTFNRTRQAVITKE, from the C Terminus of the protein sequence according to NP_005165.1; NP_001001973.1.

Please note the [peptide](#) is available for sale.

Purification and Storage

Purified from goat serum by ammonium sulphate precipitation followed by antigen affinity chromatography using the immunizing peptide.

Supplied at 0.5 mg/ml in Tris saline, 0.02% sodium azide, pH7.3 with 0.5% bovine serum albumin.

Aliquot and store at -20°C. Minimize freezing and thawing.

Applications Tested

Peptide ELISA: antibody detection limit dilution 1:128000.

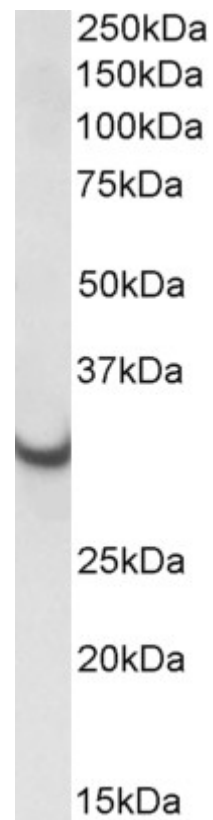
Western blot: Approx 33kDa band observed in Human Heart and in Rat Heart lysates (calculated MW of 32.9kDa according to NP_005165.1). Recommended concentration: 0.01-0.03µg/ml.

IHC: Paraffin embedded Human Heart. Recommended concentration: 5µg/ml.

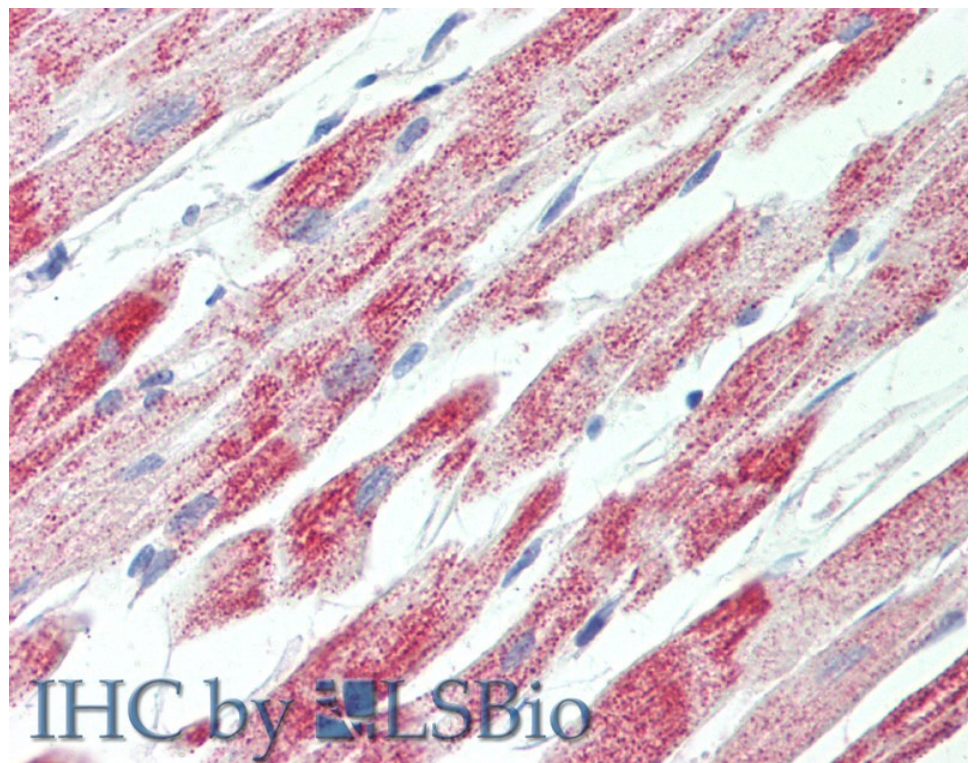
Species Reactivity

Tested: Human, Rat

Expected from sequence similarity: Human, Mouse, Rat, Dog, Cow



EB12461 (0.01 μ g/ml) staining of Rat Heart lysate (35 μ g protein in RIPA buffer). Primary incubation was 1 hour. Detected by chemiluminescence.



EB12461 (5 μ g/ml) staining of paraffin embedded Human Heart. Steamed antigen retrieval with citrate buffer pH 6, AP-staining.