



UK Office

Everest Biotech Ltd

Cherwell Innovation Centre
77 Heyford Park
Upper Heyford
Oxfordshire
OX25 5HD
UK

Enquiries:

info@everestbiotech.com

Sales:

sales@everestbiotech.com

Tech support:

support@everestbiotech.com

Tel: +44 (0)1869 238326

www.everestbiotech.com

**Research Use Only. Not for
diagnostic or therapeutic use.**

EB11166-B - Goat Anti-Atrial natriuretic factor, Biotinylated Antibody

Size: 100µg specific antibody in 200µl



Target Protein

Principal Names: NPPA, natriuretic peptide A, ANF, ANP, ATFB6, ATRST2, CDD, CDD-ANF, CDP, PND, atriopeptin, cardiodilatin-related peptide, cardionatrin, natriuretic peptide precursor A variant 1, prepronatriodilatin

Official Symbol: NPPA

Accession Number(s): NP_006163.1

Human GeneID(s): [4878](#)

Non-Human GeneID(s): 230899 (mouse), 24602 (rat)

Immunogen

Peptide with sequence RIGAQSGLGCNSFR., from the C Terminus of the protein sequence according to NP_006163.1.

Purification and Storage

Purified from goat serum by ammonium sulphate precipitation followed by antigen affinity chromatography using the immunizing peptide.

Supplied at 0.5 mg/ml in Tris saline, 0.02% sodium azide, pH7.3 with 0.5% bovine serum albumin.

Aliquot and store at -20°C. Minimize freezing and thawing.

Applications Tested

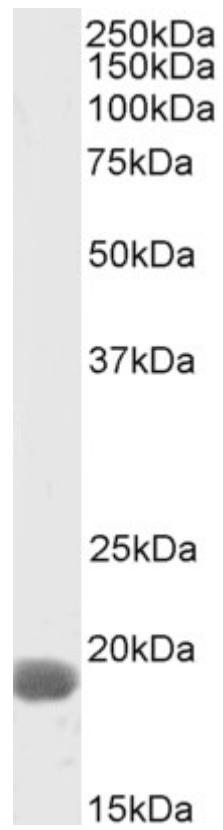
Peptide ELISA: antibody detection limit dilution 1:32000.

Western blot: Approx 19kDa band observed in Mouse Heart lysates (calculated MW of 16.4kDa according to NP_006163.1). See non-biotinylated parental product's datasheet for further QC data. Recommended concentration: 1-3µg/ml.

Species Reactivity

Tested: Human, Mouse, Rat

Expected from sequence similarity: Human, Mouse, Rat, Dog, Pig, Cow



Biotinylated EB11166 (2 μ g/ml) staining of Mouse Heart lysate (35 μ g protein in RIPA buffer), exactly mirroring its parental non-biotinylated product. Primary incubation was 1 hour. Detected by chemiluminescence, using streptavidin-HRP and using NAP blocker as a substitute for skimmed milk.