



## International Office

### Everest Biotech Ltd

Vector Laboratories, Inc.  
6737 Mowry Ave  
Newark, CA 94560  
United States

Customer Service:

[customerservice@vectorlabs.com](mailto:customerservice@vectorlabs.com)

Technical Service:

[technical@vectorlabs.com](mailto:technical@vectorlabs.com)

Tel: +1 (800) 227-6666

[www.everestbiotech.com](http://www.everestbiotech.com)

**Research Use Only. Not for  
diagnostic or therapeutic use.**

## EB08785 - Goat Anti-AVPR1B Antibody

Size: 100µg specific antibody in 200µl



### Target Protein

**Principal Names:** AVPR1B, arginine vasopressin receptor 1B, AVPR3, antidiuretic hormone receptor 1B, arginine vasopressin receptor 3, pituitary vasopressin receptor 3, vasopressin V1B receptor

**Official Symbol:** AVPR1B

**Accession Number(s):** NP\_000698.1

**Human GeneID(s):** [553](#)

### Immunogen

Peptide with sequence C-PRDLELADGEGTAE, from the C Terminus of the protein sequence according to NP\_000698.1.

Please note the [peptide](#) is available for sale.

### Purification and Storage

Purified from goat serum by ammonium sulphate precipitation followed by antigen affinity chromatography using the immunizing peptide.

Supplied at 0.5 mg/ml in Tris saline, 0.02% sodium azide, pH7.3 with 0.5% bovine serum albumin.

Aliquot and store at -20°C. Minimize freezing and thawing.

### Applications Tested

**Peptide ELISA:** antibody detection limit dilution 1:32000.

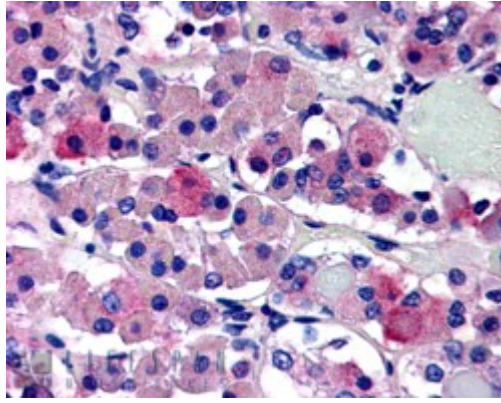
**Western blot:** Approx. 170kDa band observed in Human Brain (Substantia Nigra) lysates (calculated MW of 47.0kDa according to NP\_000698.1). The observed molecular weight corresponds to findings with EB08786, a product of different design reacting to the Mouse protein. Recommended concentration: 0.05-0.2µg/ml.

**IHC:** In paraffin embedded Human Pituitary shows bright cytoplasm staining of a few active secretory cells in the anterior pituitary. Recommended concentration, 5-10µg/ml.

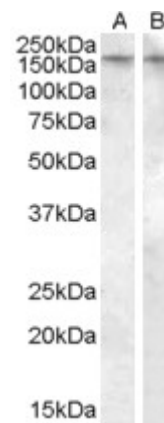
### Species Reactivity

**Tested:** Human

**Expected from sequence similarity:** Human



EB08785 (5µg/ml) staining of paraffin embedded Human Anterior Pituitary Gland. Steamed antigen retrieval with citrate buffer pH 6, AP-staining.



EB08785 (0.5µg/ml) staining of Human Amygdala lysate (35µg protein in RIPA buffer) in lane A and EB08786 (0.05µg/ml) staining of Rat Brain lysate (35µg protein in RIPA buffer) in lane B . Primary incubation was 1 hour. Detected by chemiluminescence.