

UK Office

Everest Biotech Ltd

Cherwell Innovation Centre
77 Heyford Park
Upper Heyford
Oxfordshire
OX25 5HD
UK

Enquiries:

info@everestbiotech.com

Sales:

sales@everestbiotech.com

Tech support:

support@everestbiotech.com

Tel: +44 (0)1869 238326

www.everestbiotech.com

**Research Use Only. Not for
diagnostic or therapeutic use.**

EB06967 - Goat Anti-BAALC Antibody

Size: 100µg specific antibody in 200µl



Target Protein

Principal Names: BAALC, brain and acute leukemia, cytoplasmic, HGNC:14333, FLJ12015

Official Symbol: BAALC

Accession Number(s): NP_079088.1

Human GeneID(s): [79870](#)

Non-Human GeneID(s): 118452 (mouse), 140720 (rat)

Important Comments: This antibody is expected to recognise isoform 1 (NP_079088.1) only.

Immunogen

Peptide with sequence C-KQNGQLQTTEAKRDAK, from the internal region of the protein sequence according to NP_079088.1.

Please note the [peptide](#) is available for sale.

Purification and Storage

Purified from goat serum by ammonium sulphate precipitation followed by antigen affinity chromatography using the immunizing peptide.

Supplied at 0.5 mg/ml in Tris saline, 0.02% sodium azide, pH7.3 with 0.5% bovine serum albumin.

Aliquot and store at -20°C. Minimize freezing and thawing.

Applications Tested

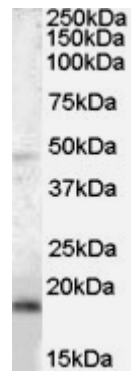
Peptide ELISA: antibody detection limit dilution 1:64000.

Western blot: Approx 18kDa band observed in mouse brain lysates (calculated MW of 15.6kDa according to human NP_079088.1 and of 15.5kDa according to mouse NP_542371.1. Recommended concentration: 0.03-0.1µg/ml. An approx, 48kDa band was consistently observed in both Human and Mouse Brain lysates. This band was successfully blocked by incubation with the immunising peptide.

Species Reactivity

Tested: Mouse

Expected from sequence similarity: Human, Mouse, Rat, Pig



EB06967 (0.03 μ g/ml) staining of mouse brain lysate (35 μ g protein in RIPA buffer). Primary incubation was 1 hour. Detected by chemiluminescence.