

## UK Office

### Everest Biotech Ltd

Cherwell Innovation Centre  
77 Heyford Park  
Upper Heyford  
Oxfordshire  
OX25 5HD  
UK

Enquiries:

[info@everestbiotech.com](mailto:info@everestbiotech.com)

Sales:

[sales@everestbiotech.com](mailto:sales@everestbiotech.com)

Tech support:

[support@everestbiotech.com](mailto:support@everestbiotech.com)

Tel: +44 (0)1869 238326

[www.everestbiotech.com](http://www.everestbiotech.com)

**Research Use Only. Not for  
diagnostic or therapeutic use.**

## EB05167 - Goat Anti-BAG2 Antibody

Size: 100µg specific antibody in 200µl



### Target Protein

**Principal Names:** BAG2, BCL2-associated athanogene 2, BAG-2, BAG-family molecular chaperone regulator-2, RP3-496N17.2, KIAA0576, MGC149462, dJ41711.2, dJ41711.2 (BAG-family molecular chaperone regulator 2)

**Official Symbol:** BAG2

**Accession Number(s):** NP\_004273.1

**Human GeneID(s):** [9532](#)

### Immunogen

Peptide with sequence CSKTLQQNAESRFN, from the C Terminus of the protein sequence according to NP\_004273.1.

Please note the [peptide](#) is available for sale.

### Purification and Storage

Purified from goat serum by ammonium sulphate precipitation followed by antigen affinity chromatography using the immunizing peptide.

Supplied at 0.5 mg/ml in Tris saline, 0.02% sodium azide, pH7.3 with 0.5% bovine serum albumin.

Aliquot and store at -20°C. Minimize freezing and thawing.

### Applications Tested

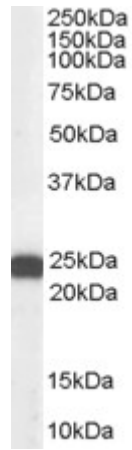
**Peptide ELISA:** antibody detection limit dilution 1:8000.

**Western blot:** Approx 25kDa band observed in Human HeLa lysates (calculated MW of 23.7kDa according to NP\_004273.1). Recommended concentration: 0.1-0.3µg/ml.

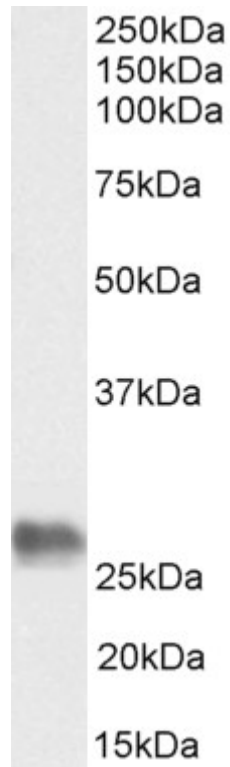
### Species Reactivity

**Tested:** Human, Pig

**Expected from sequence similarity:** Human, Pig, Cow



EB05167 (0.3 $\mu$ g/ml) staining of HeLa lysate (35 $\mu$ g protein in RIPA buffer). Primary incubation was 1 hour.  
Detected by chemiluminescence.



EB05167 (0.3 $\mu$ g/ml) staining of Pig Testis lysate (35 $\mu$ g protein in RIPA buffer). Primary incubation was 1 hour.  
Detected by chemiluminescence.