



## International Office

### Everest Biotech Ltd

Vector Laboratories, Inc.  
6737 Mowry Ave  
Newark, CA 94560  
United States

Customer Service:

[customerservice@vectorlabs.com](mailto:customerservice@vectorlabs.com)

Technical Service:

[technical@vectorlabs.com](mailto:technical@vectorlabs.com)

Tel: +1 (800) 227-6666

[www.everestbiotech.com](http://www.everestbiotech.com)

**Research Use Only. Not for  
diagnostic or therapeutic use.**

## EB05486 - Goat Anti-BAG3 / BIS/ CAIR1 Antibody

Size: 100µg specific antibody in 200µl



### Target Protein

**Principal Names:** BAG3, BCL2-associated athanogene 3, BIS, BAG-3, CAIR-1, MGC104307, DKFZp434E0610, Bcl-2-binding protein, docking protein CAIR-1, BCL2-binding athanogene 3, BAG-family molecular chaperone regulator-3

**Official Symbol:** BAG3

**Accession Number(s):** NP\_004272.2

**Human GeneID(s):** [9531](#)

### Immunogen

Peptide with sequence C-SSMTDTPGNPAAP, from the C Terminus of the protein sequence according to NP\_004272.2.

Please note the [peptide](#) is available for sale.

### Purification and Storage

Purified from goat serum by ammonium sulphate precipitation followed by antigen affinity chromatography using the immunizing peptide.

Supplied at 0.5 mg/ml in Tris saline, 0.02% sodium azide, pH7.3 with 0.5% bovine serum albumin.

Aliquot and store at -20°C. Minimize freezing and thawing.

### Applications Tested

**Peptide ELISA:** antibody detection limit dilution 1:2000.

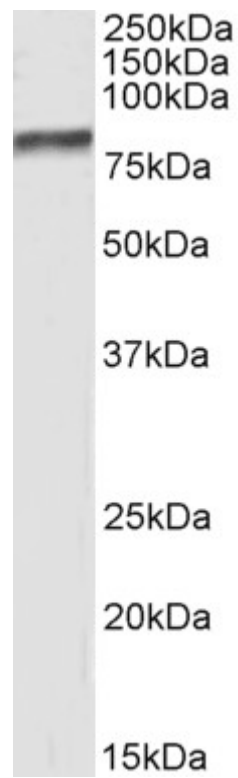
**Western blot:** Approx 80-85kDa band observed in lysates of cell line MCF7 (calculated MW of 61.6kDa according to NP\_004272.2). This molecular weight is routinely observed by other sources. Recommended concentration: 0.3-1µg/ml. Primary incubation was 1 hour.

**IHC:** Paraffin embedded Human Kidney. Recommended concentration: 7µg/ml.

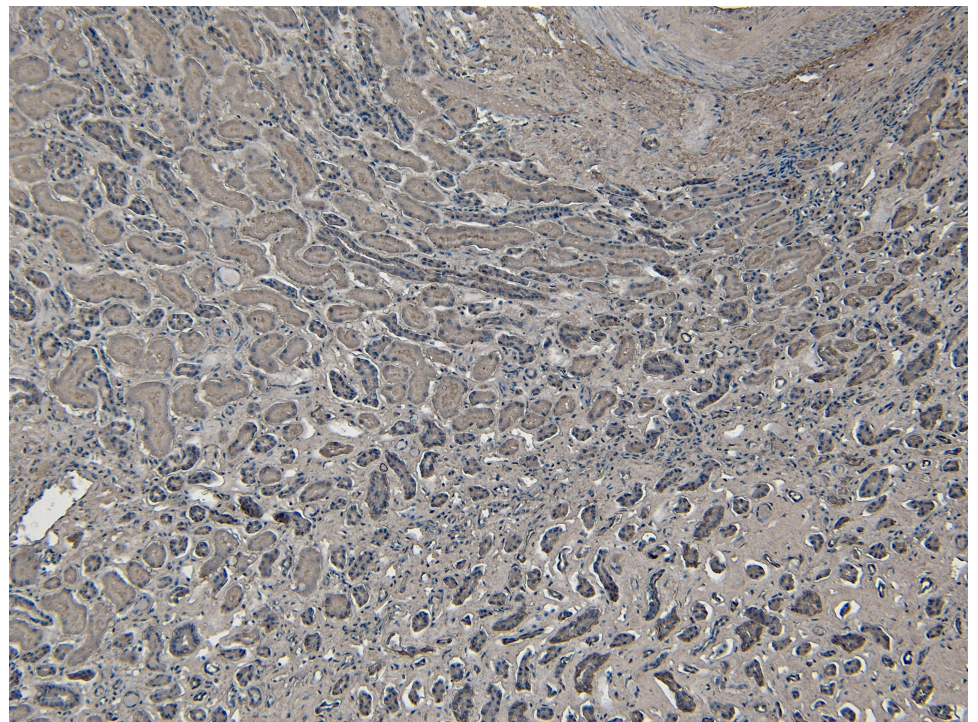
### Species Reactivity

**Tested:** Human

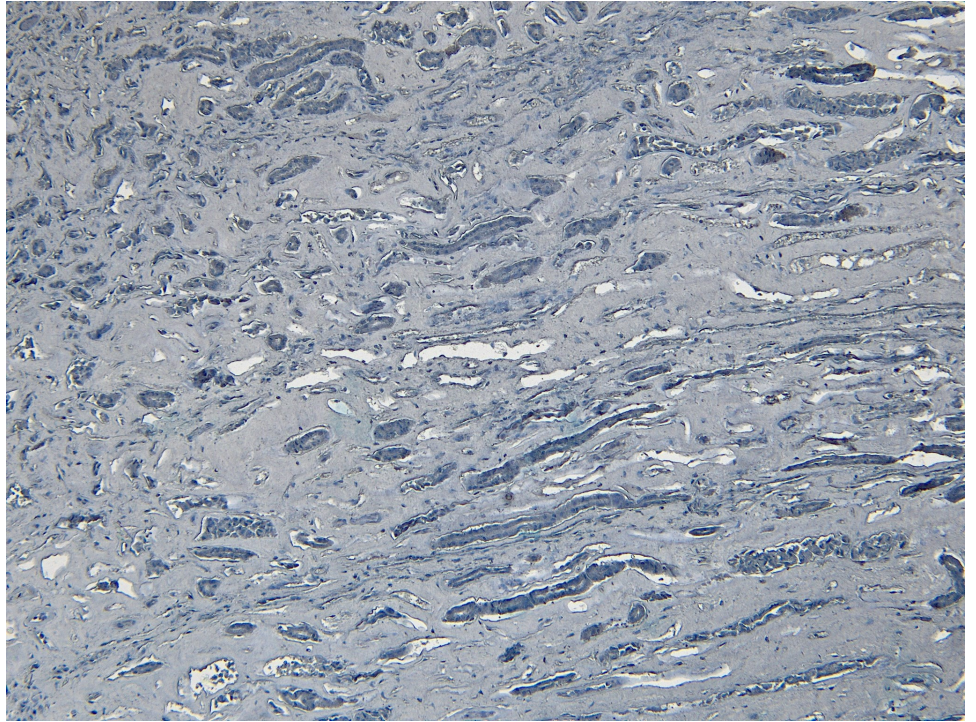
**Expected from sequence similarity:** Human



EB05486 (0.5 $\mu$ g/ml) staining of MCF7 cell lysate (35 $\mu$ g protein in RIPA buffer). Detected by chemiluminescence.



EB05486 (7 $\mu$ g/ml) staining of paraffin embedded Human Kidney. Heat induced antigen retrieval with citrate buffer Ph 6, HRP-staining.



EB05486 Negative Control showing staining of paraffin embedded Human Kidney, with no primary antibody.