



UK Office

Everest Biotech Ltd

Cherwell Innovation Centre
77 Heyford Park
Upper Heyford
Oxfordshire
OX25 5HD
UK

Enquiries:

info@everestbiotech.com

Sales:

sales@everestbiotech.com

Tech support:

support@everestbiotech.com

Tel: +44 (0)1869 238326

Fax: +44 (0)1869 238327

US Office

Everest Biotech c/o Abcore

405 Maple Street, Suite A106
Ramona,
CA 92065
USA

Inquiries:

info@everestbiotech.com

Sales:

usasales@everestbiotech.com

Tech support:

support@everestbiotech.com

Tel: 888-320-4628 (toll-free)

Fax: 888-841-9041

www.everestbiotech.com

**Research Use Only. Not for
diagnostic or therapeutic use.**

EB05487 - Goat Anti-BAG5 (N Terminus) Antibody

Size: 100µg specific antibody in 200µl



Target Protein

Principal Names: BAG5, BCL2-associated athanogene 5, BAG-5, KIAA0873, BAG-family molecular chaperone regulator-5

Official Symbol: BAG5

Accession Number(s): NP_001015049.1; NP_004864.1; NP_001015048.1

Human GeneID(s): [9529](#)

Important Comments: Variants (NP_004864.1; NP_001015048.1) encode the same isoform.

Immunogen

Peptide with sequence DMGNQHPSISRLQ-C, from the N Terminus of the protein sequence according to NP_001015049.1; NP_004864.1; NP_001015048.1.

Please note the [peptide](#) is available for sale.

Purification and Storage

Purified from goat serum by ammonium sulphate precipitation followed by antigen affinity chromatography using the immunizing peptide.

Supplied at 0.5 mg/ml in Tris saline, 0.02% sodium azide, pH7.3 with 0.5% bovine serum albumin.

Aliquot and store at -20°C. Minimize freezing and thawing.

Applications Tested

Peptide ELISA: antibody detection limit dilution 1:64000.

Western blot: Approx 55+48kDa bands observed in nuclear lysates of cell line HeLa (calculated MW of 56.0kDa according to NP_001015049.1 and of 51.2kDa according to NP_004864.1; NP_001015048.1). Recommended concentration: 1-3µg/ml.

IHC: Paraffin embedded Human Testis. Recommended concentration: 3.75µg/ml.

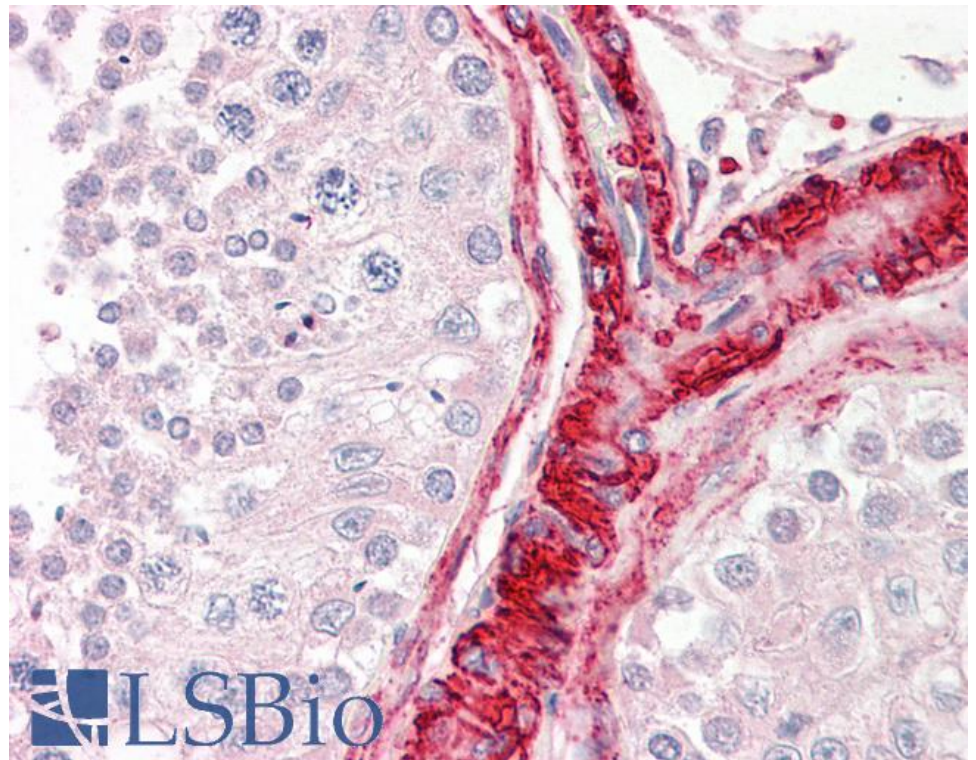
Species Reactivity

Tested: Human

Expected from sequence similarity: Human, Mouse, Rat, Dog, Cow



EB05487 (2 μ g/ml) staining of nuclear HeLa lysate (35 μ g protein in RIPA buffer). Primary incubation was 1 hour.
Detected by chemiluminescence.



EB05487 (3.75 μ g/ml) staining of paraffin embedded Human Testis. Steamed antigen retrieval with citrate buffer pH 6, AP-staining.