

UK Office

Everest Biotech Ltd

Cherwell Innovation Centre
77 Heyford Park
Upper Heyford
Oxfordshire
OX25 5HD
UK

Enquiries:

info@everestbiotech.com

Sales:

sales@everestbiotech.com

Tech support:

support@everestbiotech.com

Tel: +44 (0)1869 238326

www.everestbiotech.com

**Research Use Only. Not for
diagnostic or therapeutic use.**

EB09033 - Goat Anti-BAT3 / BAG6 Antibody

Size: 100µg specific antibody in 200µl



Target Protein

Principal Names: BAT3, HLA-B associated transcript 3, BAG-6, BAG6, D6S52E, G3, HLA-B associated transcript-3, large proline-rich protein BAT3, scythe

Official Symbol: BAT3

Accession Number(s): NP_004630.3; NP_542433.1

Human GeneID(s): [7917](#)

Non-Human GeneID(s): 224727 (mouse), 94342 (rat)

Important Comments: This antibody is expected to recognize both reported isoforms (NP_004630.3; NP_542433.1). Reported variants representing identical protein: NP_542434.1, NP_001092004.1, NP_542433.1 (isoform b).

Immunogen

Peptide with sequence C-PETNAPNHPSPAEY, from the internal region of the protein sequence according to NP_004630.3; NP_542433.1.

Please note the [peptide](#) is available for sale.

Purification and Storage

Purified from goat serum by ammonium sulphate precipitation followed by antigen affinity chromatography using the immunizing peptide.

Supplied at 0.5 mg/ml in Tris saline, 0.02% sodium azide, pH7.3 with 0.5% bovine serum albumin.

Aliquot and store at -20°C. Minimize freezing and thawing.

Applications Tested

Peptide ELISA: antibody detection limit dilution 1:128000.

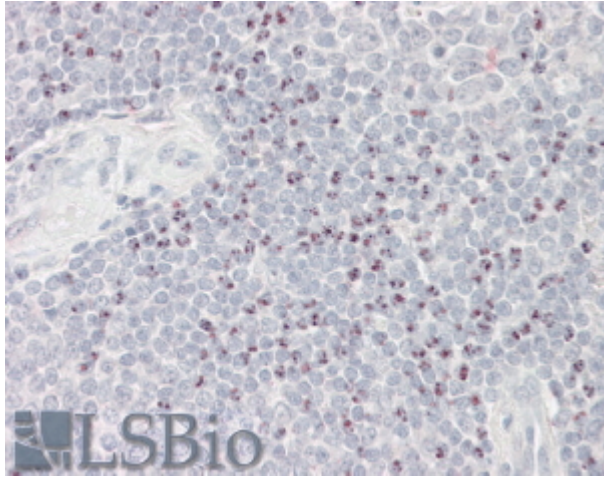
Western blot: Preliminary experiments in Human Brain (Frontal Cortex) and Human Ovary lysates gave no specific signal but low background (at antibody concentration up to 1µg/ml). We would appreciate any feedback from people in the field - have any results been reported with other antibodies/lysates?

IHC: In paraffin embedded Human Spleen shows nucleoli staining in splenocytes. Recommended concentration, 3-5µg/ml.

Species Reactivity

Tested: Human

Expected from sequence similarity: Human, Mouse, Rat, Dog, Cow, Pig



EB09033 (3.8µg/ml) staining of paraffin embedded Human Spleen. Steamed antigen retrieval with citrate buffer pH 6, AP-staining.