



## International Office

### Everest Biotech Ltd

Vector Laboratories, Inc.  
6737 Mowry Ave  
Newark, CA 94560  
United States

Customer Service:

[customerservice@vectorlabs.com](mailto:customerservice@vectorlabs.com)

Technical Service:

[technical@vectorlabs.com](mailto:technical@vectorlabs.com)

Tel: +1 (800) 227-6666

[www.everestbiotech.com](http://www.everestbiotech.com)

**Research Use Only. Not for  
diagnostic or therapeutic use.**

## EB10604 - Goat Anti-BBS4 (aa 33-46) Antibody

Size: 100µg specific antibody in 200µl



### Target Protein

**Principal Names:** BBS4, Bardet-Biedl syndrome 4, Bardet-Biedl syndrome 4 protein

**Official Symbol:** BBS4

**Accession Number(s):** NP\_149017.2

**Human GeneID(s):** [585](#)

**Non-Human GeneID(s):** 102774 (mouse)

### Immunogen

Peptide with sequence C-EKQNWLIHLHYIRK, from the Internal Region (near N Terminus) of the protein sequence according to NP\_149017.2.

Please note the [peptide](#) is available for sale.

### Purification and Storage

Purified from goat serum by ammonium sulphate precipitation followed by antigen affinity chromatography using the immunizing peptide.

Supplied at 0.5 mg/ml in Tris saline, 0.02% sodium azide, pH7.3 with 0.5% bovine serum albumin.

Aliquot and store at -20°C. Minimize freezing and thawing.

### Applications Tested

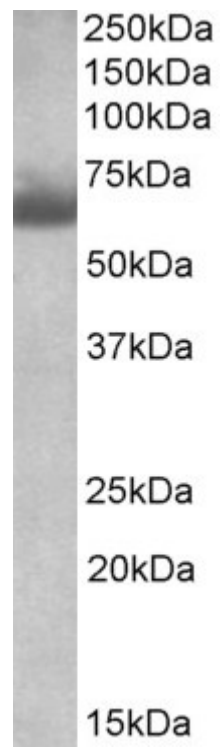
**Peptide ELISA:** antibody detection limit dilution 1:1000.

**Western blot:** Approx 65kDa band observed in Human Testis lysates (calculated MW of 58.3kDa according to NP\_149017.2). Recommended concentration: 1-3µg/ml.

### Species Reactivity

**Tested:** Human

**Expected from sequence similarity:** Human, Mouse, Dog, Pig



EB10604 (1µg/ml) staining of Human Testis lysate (35µg protein in RIPA buffer). Primary incubation was 1 hour.  
Detected by chemiluminescence.