



International Office

Everest Biotech Ltd

Vector Laboratories, Inc.
6737 Mowry Ave
Newark, CA 94560
United States

Customer Service:

customerservice@vectorlabs.com

Technical Service:

technical@vectorlabs.com

Tel: +1 (800) 227-6666

www.everestbiotech.com

**Research Use Only. Not for
diagnostic or therapeutic use.**

EB09989 - Goat Anti-BBS7 Antibody

Size: 100µg specific antibody in 200µl



Target Protein

Principal Names: Bardet-Biedl syndrome 7, Bardet-Biedl syndrome 7 protein, BBS2L1, BBS2-like 1, FLJ10715, BBS7

Official Symbol: BBS7

Accession Number(s): NP_789794.1; NP_060660.2

Human GeneID(s): [55212](#)

Non-Human GeneID(s): 71492 (mouse), 361930 (rat)

Important Comments: This antibody is expected to recognize both isoforms (NP_789794.1; NP_060660.2).

Immunogen

Peptide with sequence HCILEEADHLQE, from the internal region of the protein sequence according to NP_789794.1; NP_060660.2.

Please note the [peptide](#) is available for sale.

Purification and Storage

Purified from goat serum by ammonium sulphate precipitation followed by antigen affinity chromatography using the immunizing peptide.

Supplied at 0.5 mg/ml in Tris saline, 0.02% sodium azide, pH7.3 with 0.5% bovine serum albumin.

Aliquot and store at -20°C. Minimize freezing and thawing.

Applications Tested

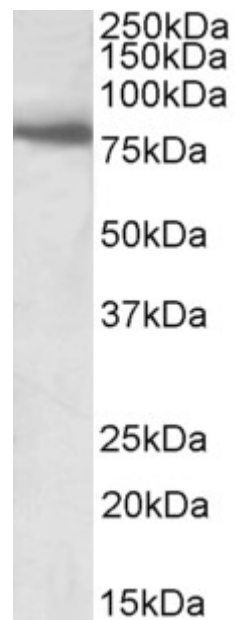
Peptide ELISA: antibody detection limit dilution 1:128000.

Western blot: Approx 80kDa band observed in Human and Rat Skeletal Muscle lysates (calculated MW of 80.4kDa according to NP_789794.1). Recommended concentration: 1-3µg/ml.

Species Reactivity

Tested: Human, Rat

Expected from sequence similarity: Human, Mouse, Rat, Dog, Cow



EB09989 (1µg/ml) staining of Human Skeletal Muscle lysate (35µg protein in RIPA buffer). Primary incubation was 1 hour. Detected by chemiluminescence.



EB09989 (0.5µg/ml) staining of Rat Skeletal Muscle lysate (35µg protein in RIPA buffer). Primary incubation was 1 hour. Detected by chemiluminescence.