

UK Office

Everest Biotech Ltd

Cherwell Innovation Centre
77 Heyford Park
Upper Heyford
Oxfordshire
OX25 5HD
UK

Enquiries:

info@everestbiotech.com

Sales:

sales@everestbiotech.com

Tech support:

support@everestbiotech.com

Tel: +44 (0)1869 238326

www.everestbiotech.com

**Research Use Only. Not for
diagnostic or therapeutic use.**

EB05397 - Goat Anti-BCAP31 / BAP31 Antibody

Size: 100µg specific antibody in 200µl



Target Protein

Principal Names: BCAP31, BAP31, DXS1357E, accessory protein BAP31, CDM, 6C6-AG, B-cell receptor-associated protein 31, CDM, 6C6 antigen, BCR-associated protein Bap31, OTTHUMP00000025978, p28 Bap31

Official Symbol: BCAP31

Accession Number(s): NP_001132929.1; NP_005736.3

Human GeneID(s): [10134](#)

Important Comments: This antibody is expected to recognise isoform a (NP_001132929.1) and isoform b (NP_005736.3; NP_001132913.1).

Immunogen

Peptide with sequence C-QAAVDGPMDKKEE, from the C Terminus of the protein sequence according to NP_001132929.1; NP_005736.3.

Please note the [peptide](#) is available for sale.

Purification and Storage

Purified from goat serum by ammonium sulphate precipitation followed by antigen affinity chromatography using the immunizing peptide.

Supplied at 0.5 mg/ml in Tris saline, 0.02% sodium azide, pH7.3 with 0.5% bovine serum albumin.

Aliquot and store at -20°C. Minimize freezing and thawing.

Applications Tested

Peptide ELISA: antibody detection limit dilution 1:32000.

Western blot: Approx 30kDa band observed in Human Placenta and Brain lysate (predicted MW of 28kDa according to NP_005736). Recommended for use at 1-3µg/ml.

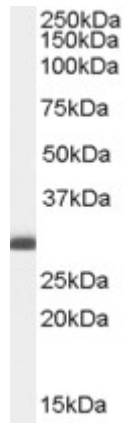
IHC: Paraffin embedded Human Kidney and Brain (Cerebellum and Cortex).

Recommended concentration: 3.75µg/ml.

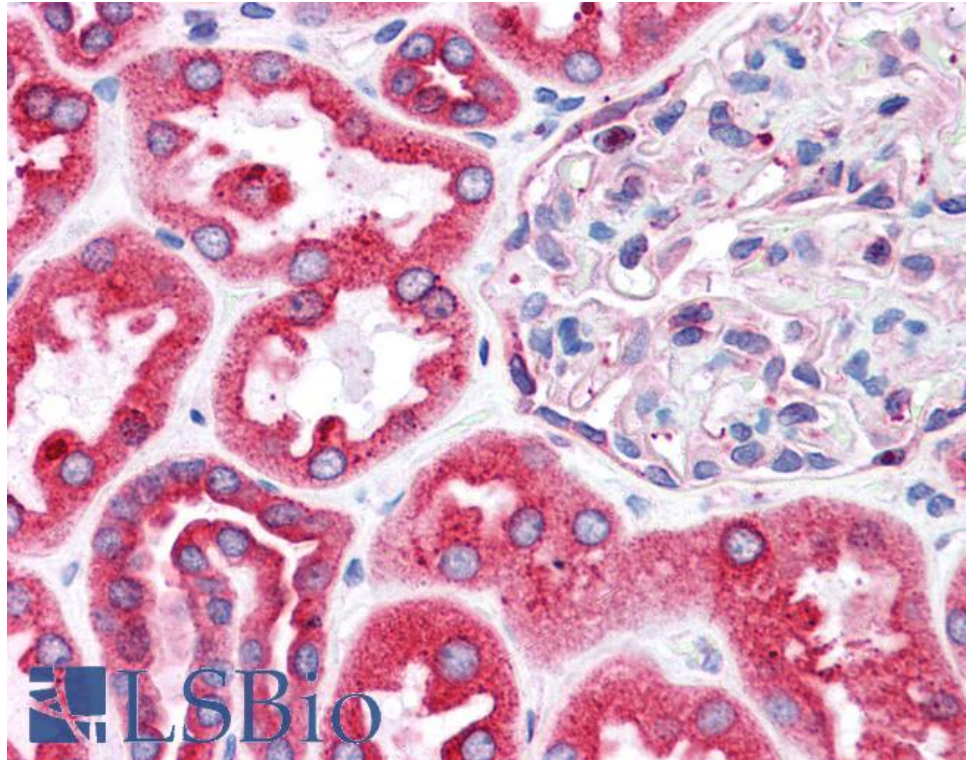
Species Reactivity

Tested: Human

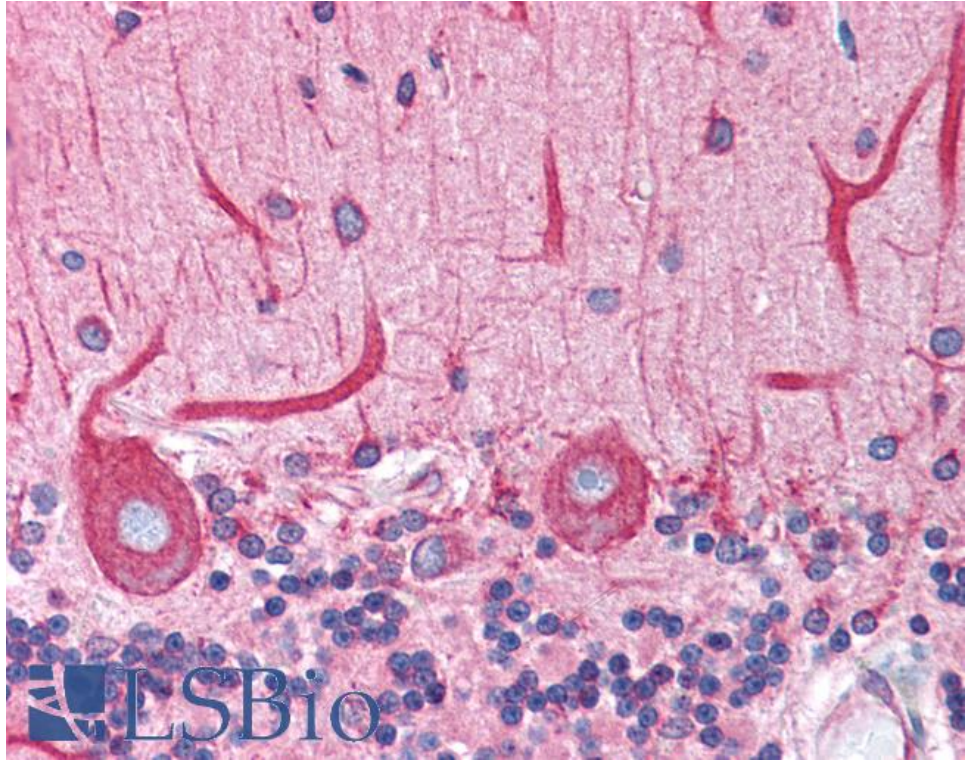
Expected from sequence similarity: Human, Dog, Pig, Cow



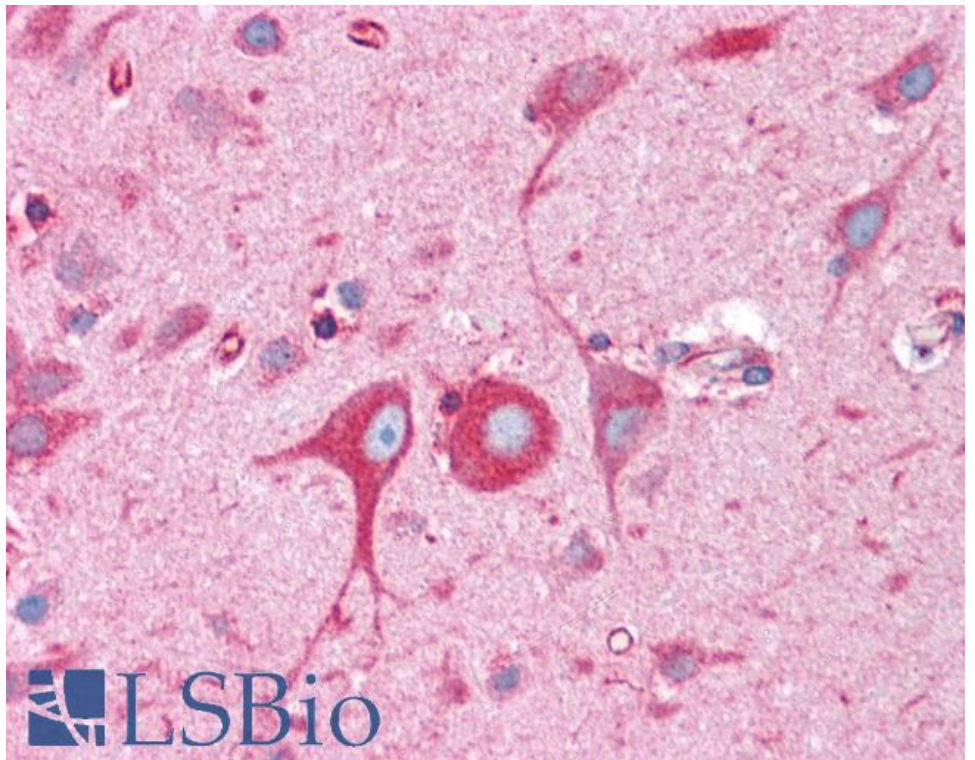
EB05397 (0.1 μ g/ml) staining of Human Breast lysate (35 μ g protein in RIPA buffer). Primary incubation was 1 hour. Detected by chemiluminescence.



EB05397 (3.75 μ g/ml) staining of paraffin embedded Human Kidney. Steamed antigen retrieval with citrate buffer pH 6, AP-staining.



EB05397 (3.75µg/ml) staining of paraffin embedded Human Cerebellum. Steamed antigen retrieval with citrate buffer pH 6, AP-staining.



EB05397 (3.75µg/ml) staining of paraffin embedded Human Cortex. Steamed antigen retrieval with citrate buffer pH 6, AP-staining.