

UK Office

Everest Biotech Ltd

Cherwell Innovation Centre
77 Heyford Park
Upper Heyford
Oxfordshire
OX25 5HD
UK

Enquiries:

info@everestbiotech.com

Sales:

sales@everestbiotech.com

Tech support:

support@everestbiotech.com

Tel: +44 (0)1869 238326

www.everestbiotech.com

**Research Use Only. Not for
diagnostic or therapeutic use.**

EB06444-T - Goat Anti-BCL2 Antibody - Trial

Size: 20µg specific antibody in 40µl



Target Protein

Principal Names: BCL2, Bcl-2, B-cell CLL/lymphoma 2, B-cell lymphoma protein 2, OTTHUMP00000163680

Official Symbol: BCL2

Accession Number(s): NP_000624.2; NP_000648.2

Human GeneID(s): [596](#)

Non-Human GeneID(s): 12043 (mouse), 24224 (rat)

Important Comments: This antibody is expected to recognise both reported isoforms (NP_000624; NP_000648)

Immunogen

Peptide with sequence AGRTGYDNREIVMKYC, from the N Terminus of the protein sequence according to NP_000624.2; NP_000648.2.

Please note the [peptide](#) is available for sale.

Purification and Storage

Purified from goat serum by ammonium sulphate precipitation followed by antigen affinity chromatography using the immunizing peptide.

Supplied at 0.5 mg/ml in Tris saline, 0.02% sodium azide, pH7.3 with 0.5% bovine serum albumin.

Aliquot and store at -20°C. Minimize freezing and thawing.

Applications Tested

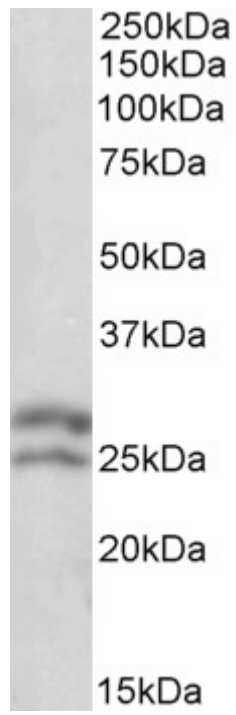
Peptide ELISA: antibody detection limit dilution 1:64000.

Western blot: Approx 27+25kDa band observed in Human Lymph lysates (calculated MW of 26.3kDa according to NP_000624.2 and of 22.2kDa according to NP_000648.2).
Recommended concentration: 0.1-0.3µg/ml.

Species Reactivity

Tested: Human

Expected from sequence similarity: Human, Mouse, Rat, Dog



EB06444 (0.1 μ g/ml) staining of Human Lymph lysate (35 μ g protein in RIPA buffer). Primary incubation was 1 hour. Detected by chemiluminescence.