



UK Office

Everest Biotech Ltd

Cherwell Innovation Centre
77 Heyford Park
Upper Heyford
Oxfordshire
OX25 5HD
UK

Enquiries:

info@everestbiotech.com

Sales:

sales@everestbiotech.com

Tech support:

support@everestbiotech.com

Tel: +44 (0)1869 238326

www.everestbiotech.com

**Research Use Only. Not for
diagnostic or therapeutic use.**

EB10384 - Goat Anti-BCL2L15 Antibody

Size: 100µg specific antibody in 200µl



Target Protein

Principal Names: BCL2-like 15, Bfk, C1orf178, FLJ22588, pro-apoptotic Bcl-2 protein, BCL2L15

Official Symbol: BCL2L15

Accession Number(s): NP_001010922.1

Human GeneID(s): [440603](#)

Immunogen

Peptide with sequence C-SPTLQVASRN, from the internal region of the protein sequence according to NP_001010922.1.

Please note the [peptide](#) is available for sale.

Purification and Storage

Purified from goat serum by ammonium sulphate precipitation followed by antigen affinity chromatography using the immunizing peptide.

Supplied at 0.5 mg/ml in Tris saline, 0.02% sodium azide, pH7.3 with 0.5% bovine serum albumin.

Aliquot and store at -20°C. Minimize freezing and thawing.

Applications Tested

Peptide ELISA: antibody detection limit dilution 1:8000.

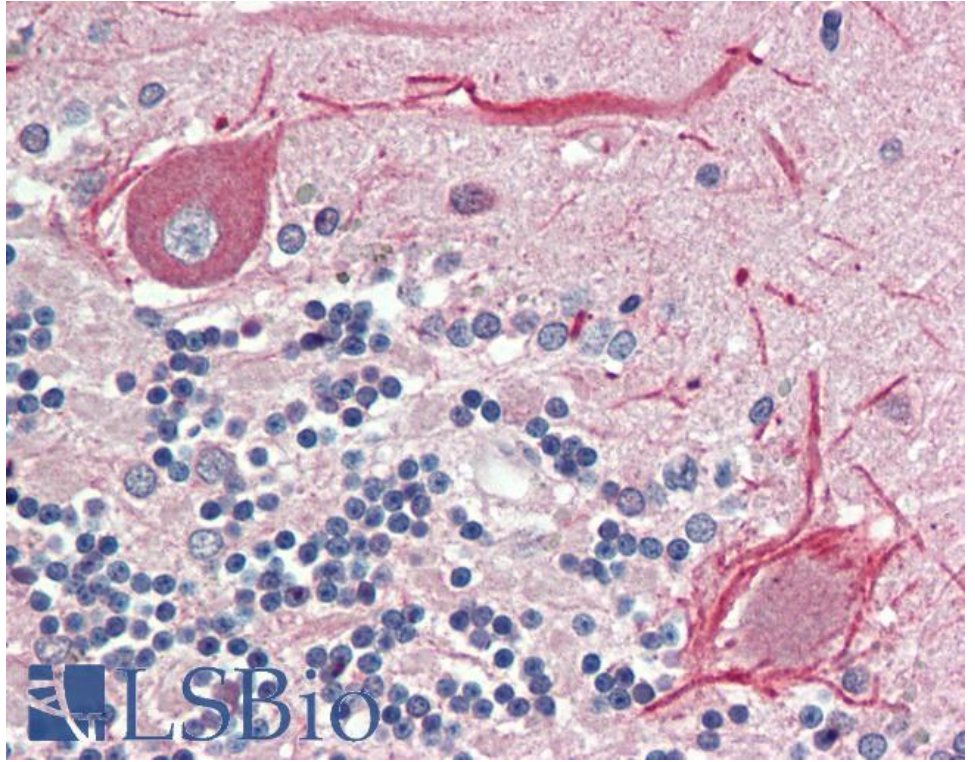
Western blot: Preliminary experiments in lysates of cell lines A549, HEK293 and Jurkat gave no specific signal but low background (at antibody concentration up to 1µg/ml).

IHC: Paraffin embedded Human Brain (Cerebellum). Recommended concentration: 5µg/ml.

Species Reactivity

Tested: Human

Expected from sequence similarity: Human



EB10384 (5µg/ml) staining of paraffin embedded Human Cerebellum. Steamed antigen retrieval with citrate buffer pH 6, AP-staining.