



UK Office

Everest Biotech Ltd

Cherwell Innovation Centre
77 Heyford Park
Upper Heyford
Oxfordshire
OX25 5HD
UK

Enquiries:

info@everestbiotech.com

Sales:

sales@everestbiotech.com

Tech support:

support@everestbiotech.com

Tel: +44 (0)1869 238326

Fax: +44 (0)1869 238327

US Office

Everest Biotech c/o Abcore

405 Maple Street, Suite A106
Ramona,
CA 92065
USA

Inquiries:

info@everestbiotech.com

Sales:

usasales@everestbiotech.com

Tech support:

support@everestbiotech.com

Tel: 888-320-4628 (toll-free)

Fax: 888-841-9041

www.everestbiotech.com

**Research Use Only. Not for
diagnostic or therapeutic use.**

EB06026 - Goat Anti-BCOR / BCL6 co-repressor Antibody

Size: 100µg specific antibody in 200µl



Target Protein

Principal Names: BCOR, BCL-6 interacting corepressor, FLJ20285, KIAA1575, BCL6 co-repressor, ANOP2, FLJ38041, MAA2, MGC131961, MGC71031, 5830466J11Rik, 8430401K06Rik, MCOPS2

Official Symbol: BCOR

Accession Number(s): NP_060215.4; NP_001116855.1; NP_001116856.1; NP_001116857.1

Human GeneID(s): [54880](#)

Non-Human GeneID(s): 71458 (mouse)

Important Comments: This antibody is expected to recognise all reported isoforms. Variants (NP_060215.4; NP_001116855.1) encode the same isoform.

Immunogen

Peptide with sequence LSATPLYGNVHSW-C, from the N Terminus of the protein sequence according to NP_060215.4; NP_001116855.1; NP_001116856.1; NP_001116857.1.

Please note the [peptide](#) is available for sale.

Purification and Storage

Purified from goat serum by ammonium sulphate precipitation followed by antigen affinity chromatography using the immunizing peptide.

Supplied at 0.5 mg/ml in Tris saline, 0.02% sodium azide, pH7.3 with 0.5% bovine serum albumin.

Aliquot and store at -20°C. Minimize freezing and thawing.

Applications Tested

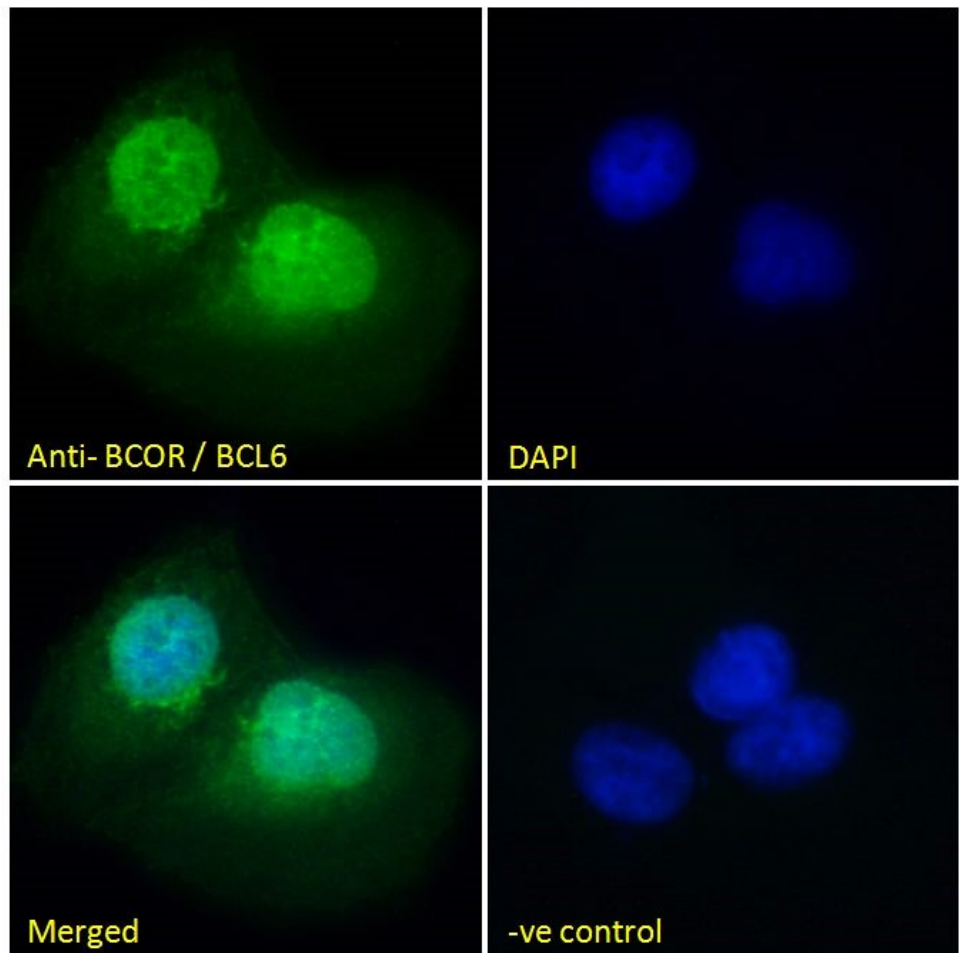
Peptide ELISA: antibody detection limit dilution 1:128000.

Immunofluorescence: Strong expression of the protein seen in the nucleus of U2OS and A431 cells. Recommended concentration: 10µg/ml.

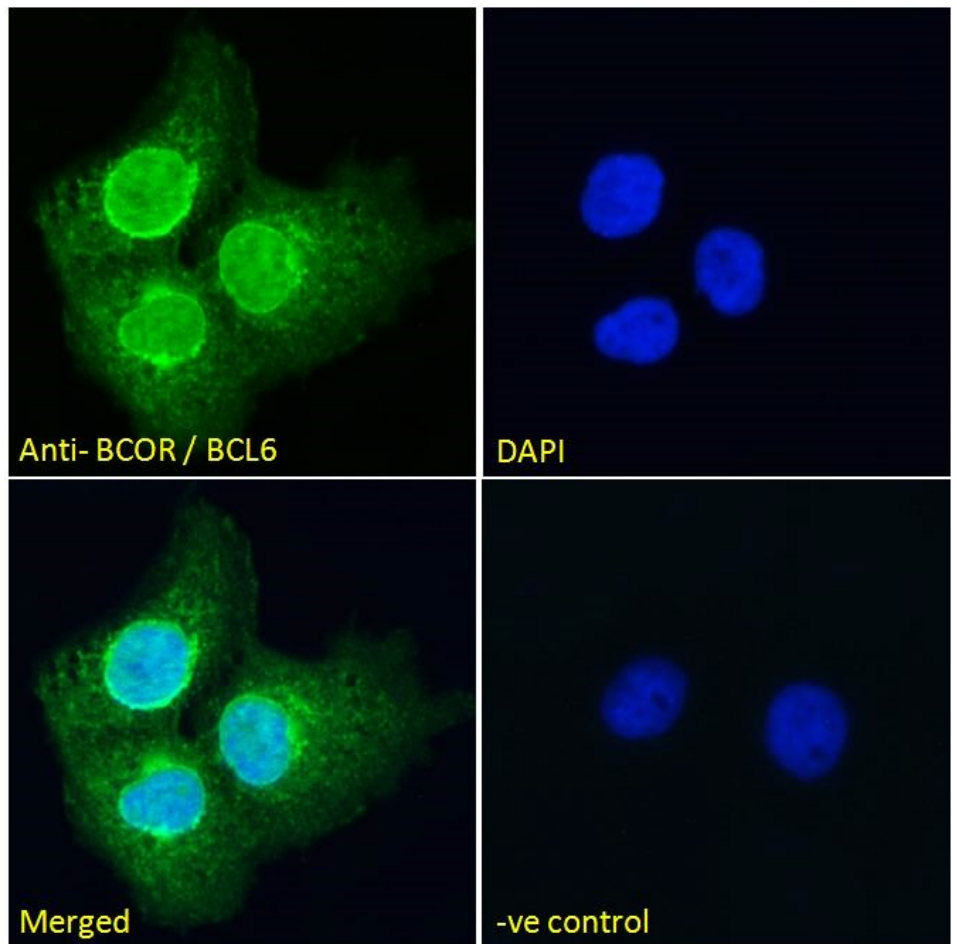
Species Reactivity

Tested: Human

Expected from sequence similarity: Human, Mouse, Dog, Pig, Cow



EB06026 Immunofluorescence analysis of paraformaldehyde fixed U2OS cells, permeabilized with 0.15% Triton. Primary incubation 1hr (10ug/ml) followed by Alexa Fluor 488 secondary antibody (2ug/ml), showing nuclear staining. The nuclear stain is DAPI (blue). Negative control: Unimmunized goat IgG (10ug/ml) followed by Alexa Fluor 488 secondary antibody (2ug/ml).



EB06026 Immunofluorescence analysis of paraformaldehyde fixed A431 cells, permeabilized with 0.15% Triton. Primary incubation 1hr (10ug/ml) followed by Alexa Fluor 488 secondary antibody (2ug/ml), showing nuclear and weak cytoplasmic staining. The nuclear stain is DAPI (blue). Negative control: Unimmunized goat IgG (10ug/ml) followed by Alexa Fluor 488 secondary antibody (2ug/ml).