



International Office

Everest Biotech Ltd

Vector Laboratories, Inc.
6737 Mowry Ave
Newark, CA 94560
United States

Customer Service:

customerservice@vectorlabs.com

Technical Service:

technical@vectorlabs.com

Tel: +1 (800) 227-6666

www.everestbiotech.com

**Research Use Only. Not for
diagnostic or therapeutic use.**

EB08290 - Goat Anti-BDH2 / DHRS6 (aa 60 to 71) Antibody

Size: 100µg specific antibody in 200µl



Target Protein

Principal Names: BDH2, DHRS6, 3-hydroxybutyrate dehydrogenase, type 2, EFA6R, FLJ13261, PRO20933, UCPA-OR, UNQ6308, dehydrogenase/reductase (SDR family) member 6, oxidoreductase UCPA

Official Symbol: BDH2

Accession Number(s): NP_064524.3

Human GeneID(s): [56898](#)

Immunogen

Peptide with sequence C-TKKKQIDQFANE, from the internal region of the protein sequence according to NP_064524.3.

Please note the [peptide](#) is available for sale.

Purification and Storage

Purified from goat serum by ammonium sulphate precipitation followed by antigen affinity chromatography using the immunizing peptide.

Supplied at 0.5 mg/ml in Tris saline, 0.02% sodium azide, pH7.3 with 0.5% bovine serum albumin.

Aliquot and store at -20°C. Minimize freezing and thawing.

Applications Tested

Peptide ELISA: antibody detection limit dilution 1:64000.

Western blot: Approx 26kDa band observed in Human Kidney lysates (calculated MW of 26.7kDa according to NP_064524.3). Recommended concentration: 0.3-1µg/ml. Primary incubation was 1 hour.

IHC: Paraffin embedded Human Kidney. Recommended concentration: 5µg/ml.

Species Reactivity

Tested: Human

Expected from sequence similarity: Human, Mouse, Rat

Specific Reference

This antibody has been successfully used in Western Blot on Human:

Buhrke T, Lengler I, Lampen A.

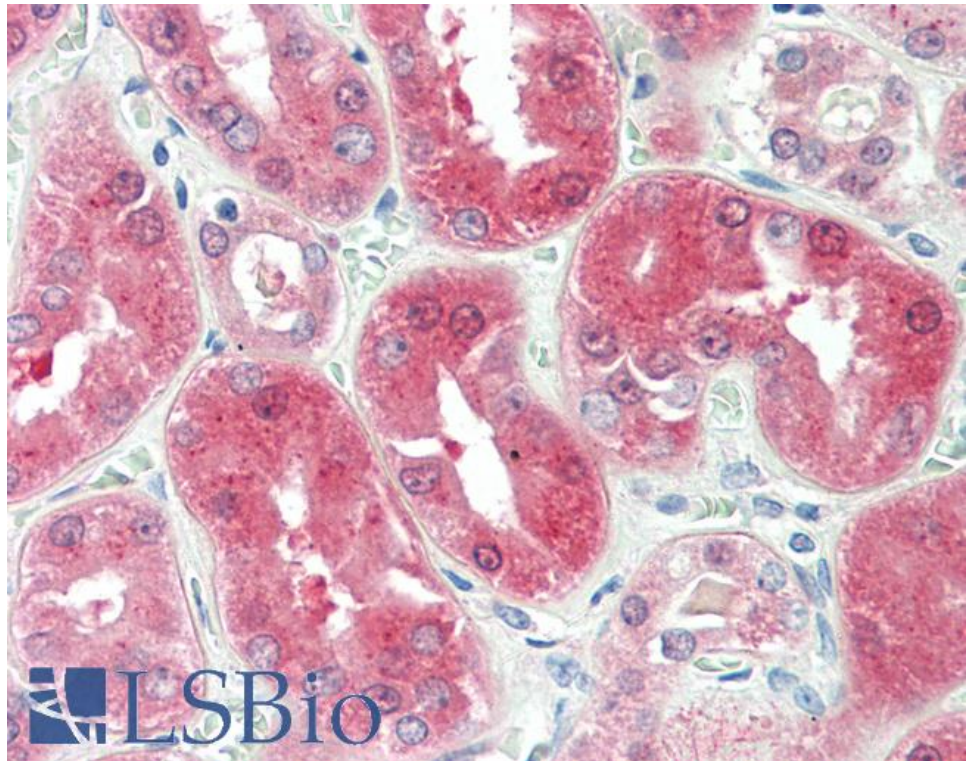
Analysis of proteomic changes induced upon cellular differentiation of the human intestinal cell line Caco-2.

Dev Growth Differ. 2011 Apr;53(3):411-26

PMID: 21492153



EB08290 (0.3µg/ml) staining of Human Kidney lysate (35µg protein in RIPA buffer). Detected by chemiluminescence.



EB08290 (5µg/ml) staining of paraffin embedded Human Kidney. Steamed antigen retrieval with citrate buffer pH 6, AP-staining.