



UK Office

Everest Biotech Ltd

Cherwell Innovation Centre
77 Heyford Park
Upper Heyford
Oxfordshire
OX25 5HD
UK

Enquiries:

info@everestbiotech.com

Sales:

sales@everestbiotech.com

Tech support:

support@everestbiotech.com

Tel: +44 (0)1869 238326

www.everestbiotech.com

**Research Use Only. Not for
diagnostic or therapeutic use.**

EB08290 - Goat Anti-BDH2 / DHRS6 (aa 60 to 71) Antibody

Size: 100µg specific antibody in 200µl



Target Protein

Principal Names: BDH2, DHRS6, 3-hydroxybutyrate dehydrogenase, type 2, EFA6R, FLJ13261, PRO20933, UCPA-OR, UNQ6308, dehydrogenase/reductase (SDR family) member 6, oxidoreductase UCPA

Official Symbol: BDH2

Accession Number(s): NP_064524.3

Human GeneID(s): [56898](#)

Immunogen

Peptide with sequence C-TKKKQIDQFANE, from the internal region of the protein sequence according to NP_064524.3.

Please note the [peptide](#) is available for sale.

Purification and Storage

Purified from goat serum by ammonium sulphate precipitation followed by antigen affinity chromatography using the immunizing peptide.

Supplied at 0.5 mg/ml in Tris saline, 0.02% sodium azide, pH7.3 with 0.5% bovine serum albumin.

Aliquot and store at -20°C. Minimize freezing and thawing.

Applications Tested

Peptide ELISA: antibody detection limit dilution 1:64000.

Western blot: Approx 26kDa band observed in Human Brain (Cerebellum), Kidney and Liver lysates (calculated MW of 26.7kDa according to NP_064524.3). In transfected HEK293 transiently expressing BDH2 a band of approx. 29kDa is observed. This band is not observed in the non-transfected HEK293. Recommended concentration: 0.3-1µg/ml. Primary incubation was 1 hour.

IHC: Paraffin embedded Human Kidney. Recommended concentration: 5µg/ml.

Species Reactivity

Tested: Human

Expected from sequence similarity: Human, Mouse, Rat

Specific Reference

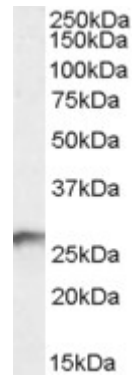
This antibody has been successfully used in Western Blot on Human:

Buhrke T, Lengler I, Lampen A.

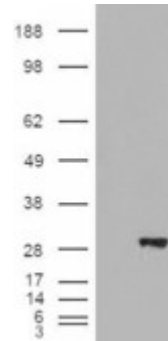
Analysis of proteomic changes induced upon cellular differentiation of the human intestinal cell line Caco-2.

Dev Growth Differ. 2011 Apr;53(3):411-26

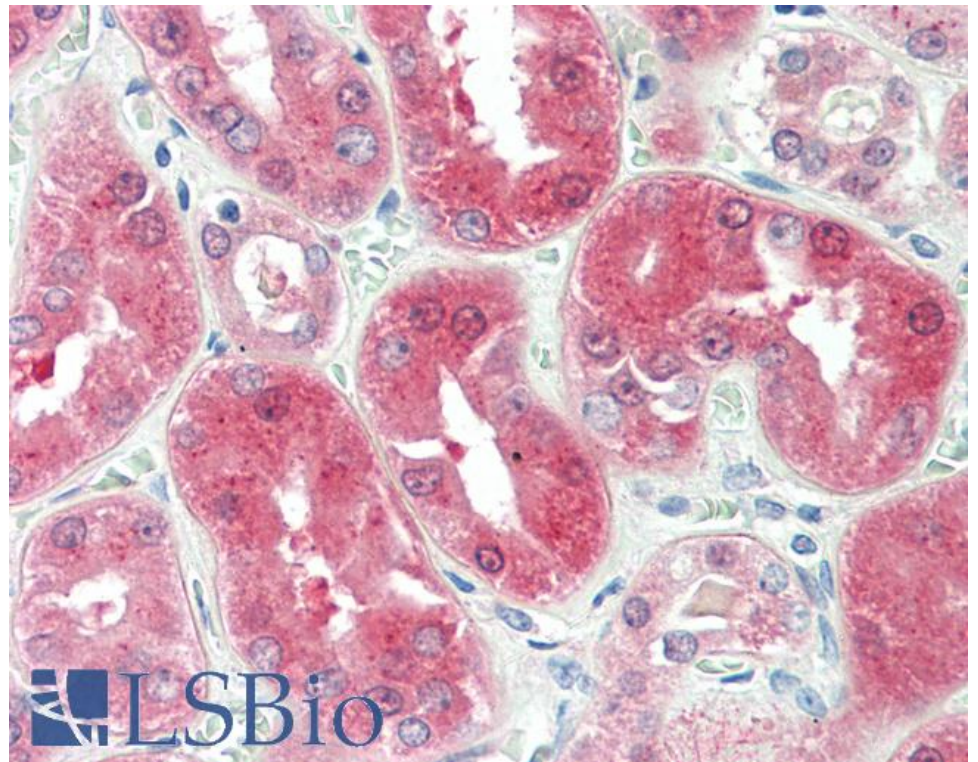
PMID: 21492153



EB08290 (0.3µg/ml) staining of Human Kidney lysate (35µg protein in RIPA buffer). Detected by chemiluminescence.



HEK293 overexpressing BDH2 (RC210586) and probed with EB08290 (mock transfection in first lane), tested by Origene.



EB08290 (5µg/ml) staining of paraffin embedded Human Kidney. Steamed antigen retrieval with citrate buffer pH 6, AP-staining.