



UK Office

Everest Biotech Ltd

Cherwell Innovation Centre
77 Heyford Park
Upper Heyford
Oxfordshire
OX25 5HD
UK

Enquiries:

info@everestbiotech.com

Sales:

sales@everestbiotech.com

Tech support:

support@everestbiotech.com

Tel: +44 (0)1869 238326

Fax: +44 (0)1869 238327

US Office

Everest Biotech c/o Abcore

405 Maple Street, Suite A106
Ramona,
CA 92065
USA

Inquiries:

info@everestbiotech.com

Sales:

usasales@everestbiotech.com

Tech support:

support@everestbiotech.com

Tel: 888-320-4628 (toll-free)

Fax: 888-841-9041

www.everestbiotech.com

**Research Use Only. Not for
diagnostic or therapeutic use.**

EB08117 - Goat Anti-BDNF Antibody

Size: 100µg specific antibody in 200µl



Target Protein

Principal Names: BDNF, brain-derived neurotrophic factor, MGC34632, neurotrophin

Official Symbol: BDNF

Accession Number(s): NP_001700.2; NP_001700.2; NP_733928.1; NP_733929.1;
NP_733930.1; NP_733931.1

Human GeneID(s): [627](#)

Important Comments: This antibody is expected to recognise all reported isoforms
(NP_001700.2; NP_001700.2; NP_733928.1; NP_733929.1; NP_733930.1;
NP_733931.1)

Immunogen

Peptide with sequence ETKCNPMGYTKE, from the internal region of the protein
sequence according to NP_001700.2; NP_001700.2; NP_733928.1; NP_733929.1;
NP_733930.1; NP_733931.1.

Please note the [peptide](#) is available for sale.

Purification and Storage

Purified from goat serum by ammonium sulphate precipitation followed by antigen affinity
chromatography using the immunizing peptide.

Supplied at 0.5 mg/ml in Tris saline, 0.02% sodium azide, pH7.3 with 0.5% bovine serum
albumin.

Aliquot and store at -20°C. Minimize freezing and thawing.

Applications Tested

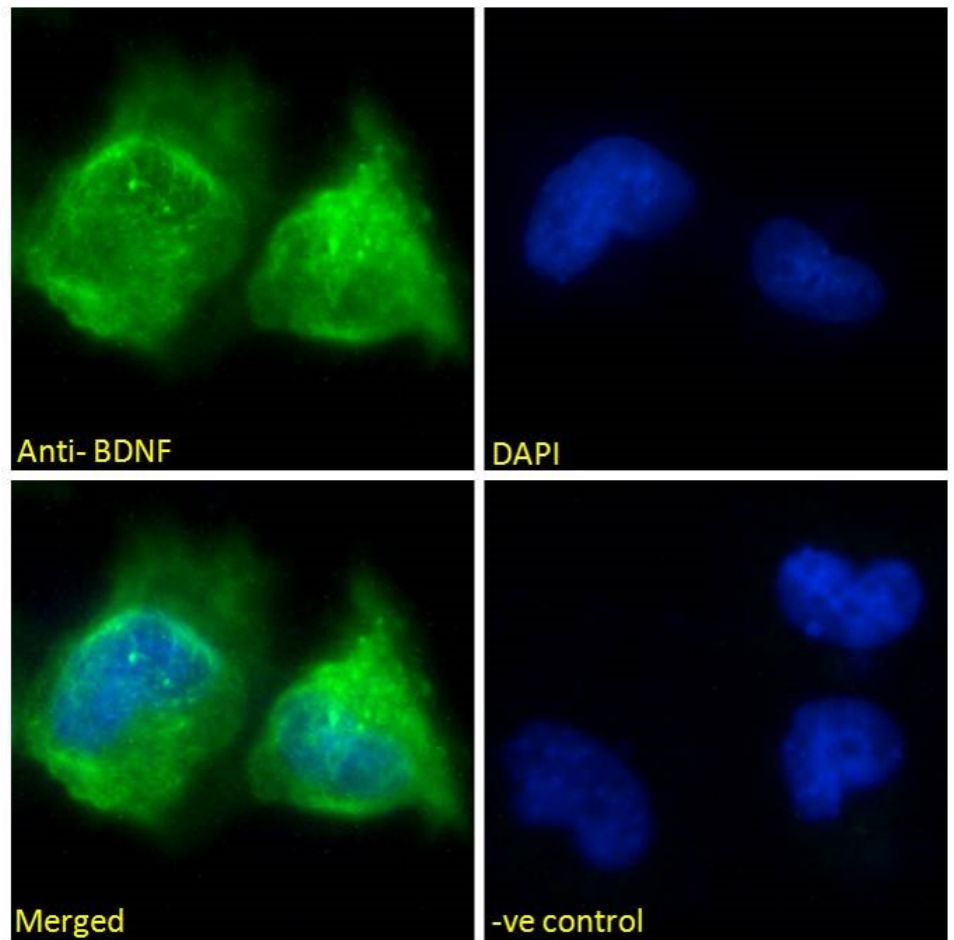
Peptide ELISA: antibody detection limit dilution 1:2000.

Immunofluorescence: Expression of the protein seen in the nucleus and cytoplasm of
Glioblastoma U251 cells. Recommended concentration: 10µg/ml.

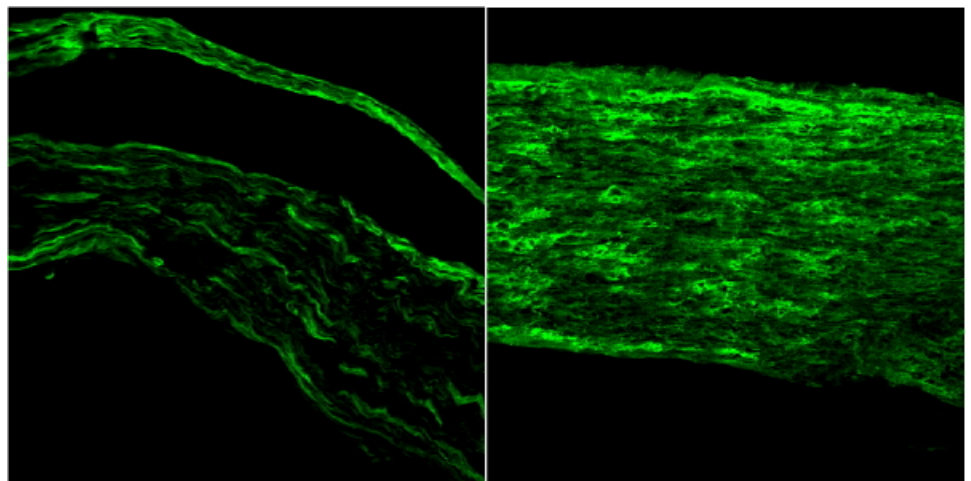
Species Reactivity

Tested: Human

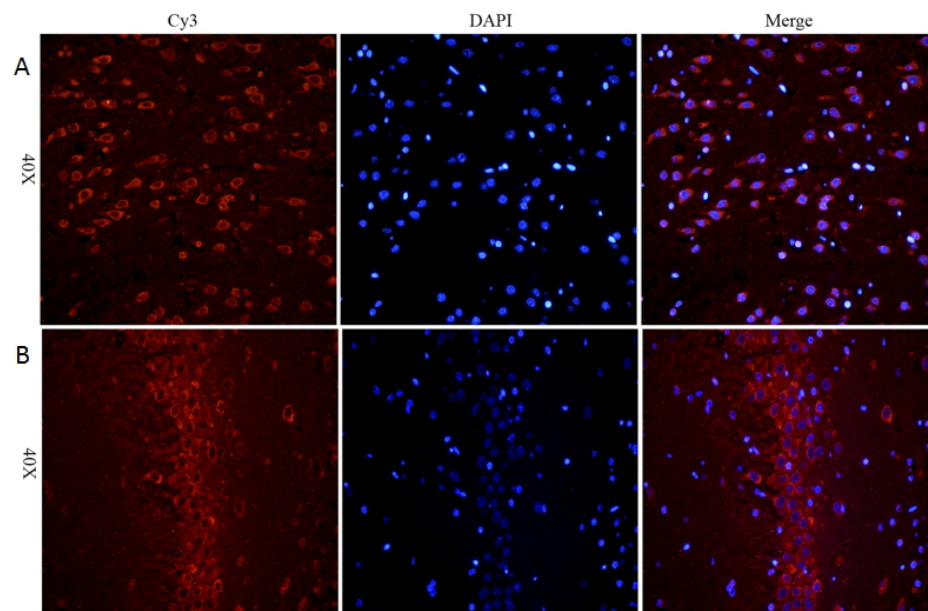
Expected from sequence similarity: Human, Mouse, Rat, Dog



EB08117 Immunofluorescence analysis of paraformaldehyde fixed U251 cells, permeabilized with 0.15% Triton. Primary incubation 1hr (10ug/ml) followed by Alexa Fluor 488 secondary antibody (2ug/ml), showing speckled nuclear and cytoplasmic staining. The nuclear stain is DAPI (blue). Negative control: Unimmunized goat IgG (10ug/ml) followed by Alexa Fluor 488 secondary antibody (2ug/ml).



EB08117 (1µg/ml) staining of PFA-perfused cryosection of Mouse sciatic nerve (left) and injured sciatic nerve (right). Alexa 488-staining. Data obtained from Simon Glerup, Department of Biomedicine, Aarhus University, Denmark. **This data is from a previous batch, not on sale.**



EB08117 (5ug/ml) staining of paraffin embedded Rat Cerebral Cortex (A) and Rat Hippocampus (B), CRY-staining with DAPI nuclear counter stain in blue. Antigen retrieval with citrate buffer pH 6 at 95-98C. **This data is from a previous batch, not on sale.**